

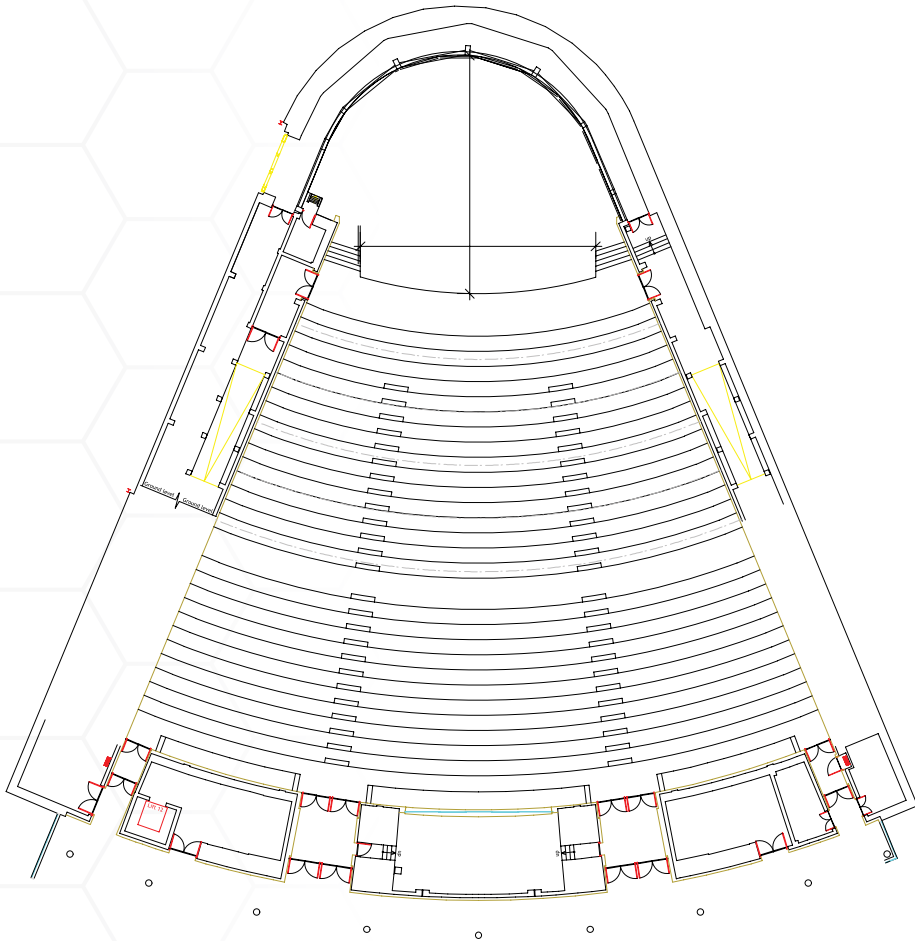
The background image shows a spacious, multi-level atrium with a glass and steel framework. Several indoor trees are planted in the ground floor. A staircase with wooden steps and metal railings is visible on the right side. The floor is made of light-colored tiles. A large, light blue, curved graphic element is on the left side of the image.

# VENUE FLOOR PLANS

# CTICC 1 VENUE SPECIFICATIONS



# CTICC | AUDITORIUM 1



## CTICC | AUDITORIUM 1 SPECIFICATIONS

<b>Length</b>	47 m
<b>Width</b>	Splayed
<b>Total area</b>	1 170 m <sup>2</sup>
<b>Height (stage to ceiling)</b>	16 m
<b>Doors: Front-of-house</b>	Width: 3.8 m x Height: 2.2 m
<b>Air-conditioning</b>	Automatic
<b>Light intensity</b>	0% or 100% (pre-sets)
<b>Access loading/unloading</b>	Walter Sisulu entrance
<b>Outside broadcasting van connection</b>	Yes, available with a connection point
<b>Audio - visual (when ordered)</b>	Hardwired infrastructure available when ordered with audio-visual, digital switcher, two branded laptops, LED lectern, and two multi-skilled technicians
<b>Large power</b>	400 A, 63 Amp 3-phase
<b>Small power</b>	16 single-phase
<b>Stage</b>	Neoprene underneath 22 mm shutter board
<b>Stage dimensions</b>	Backstage: 121.69 m <sup>2</sup> Stage: 94.77 m <sup>2</sup> Forestage: 73.98 m <sup>2</sup>
<b>Screen (when ordered with audio-visual)</b>	One
<b>Sound system (when ordered with audio-visual)</b>	Two table-top microphones One lectern microphone Speakers
<b>Translation booths</b>	Six
<b>Projection room</b>	One
<b>Orchestra pit (covered if not in use)</b>	14.5 m x 8.6 m (12 m <sup>2</sup> )
<b>Data projector (when ordered with audio-visual)</b>	9 000 ANSI Lumen Data Projector with a long-throw lens
<b>Seating</b>	Numbered in numeric order
<b>Theatre-style capacity</b>	1 516
<b>VIP rooms</b>	Two
<b>Dressing rooms</b>	Two
<b>Green Room</b>	One
<b>Storage room</b>	One
<b>Carpets</b>	Standard

# AUDITORIUM 1 SPECIFICATIONS

## SCENERY FLY BARS

Scenery bar capacity	Fly bars 3 to 5	500 kg
Scenery bar capacity	Fly bars 2, 6 to 9	350 kg
Scenery bar length	Fly bar 1	Unavailable
Scenery bar length	Fly bar 2	10 m
Scenery bar length	Fly bars 3, 4 & 5	14 m
Scenery bar length	Fly bars 6 & 7	12 m
Scenery bar length	Fly bar 8	10 m
Scenery bar length	Fly bar 9	8 m
Scenery bar at maximum raised height	Fly bar 2	15.3 m
	Fly bars 3 to 9	16.4 m
Scenery bar minimum lowered height		1.2 m
Motor unit lifting speed		0.25 m/sec
Time for full travel	Fly bars 2 to 4	51 secs
Time for full travel	Fly bars 5 to 9	55 secs
Motor size (380 V 3-phase)	Fly bars 1 to 5	2 x 1.1 kW
Motor size (380 V 3-phase)	Fly bars 6 to 9	1.5 kW

## FESTOON CURTAIN MECHANISM

<b>Maximum raised height</b>	14.9 m
<b>Reveal speed (vertical travel)</b>	0.3 m/sec
<b>Motor size (380 V 3-phase): festoon</b>	2 x 0.75 kW
<b>Minimum factor of safety on all wire ropes</b>	10 to 1
<b>Carpets</b>	Standard

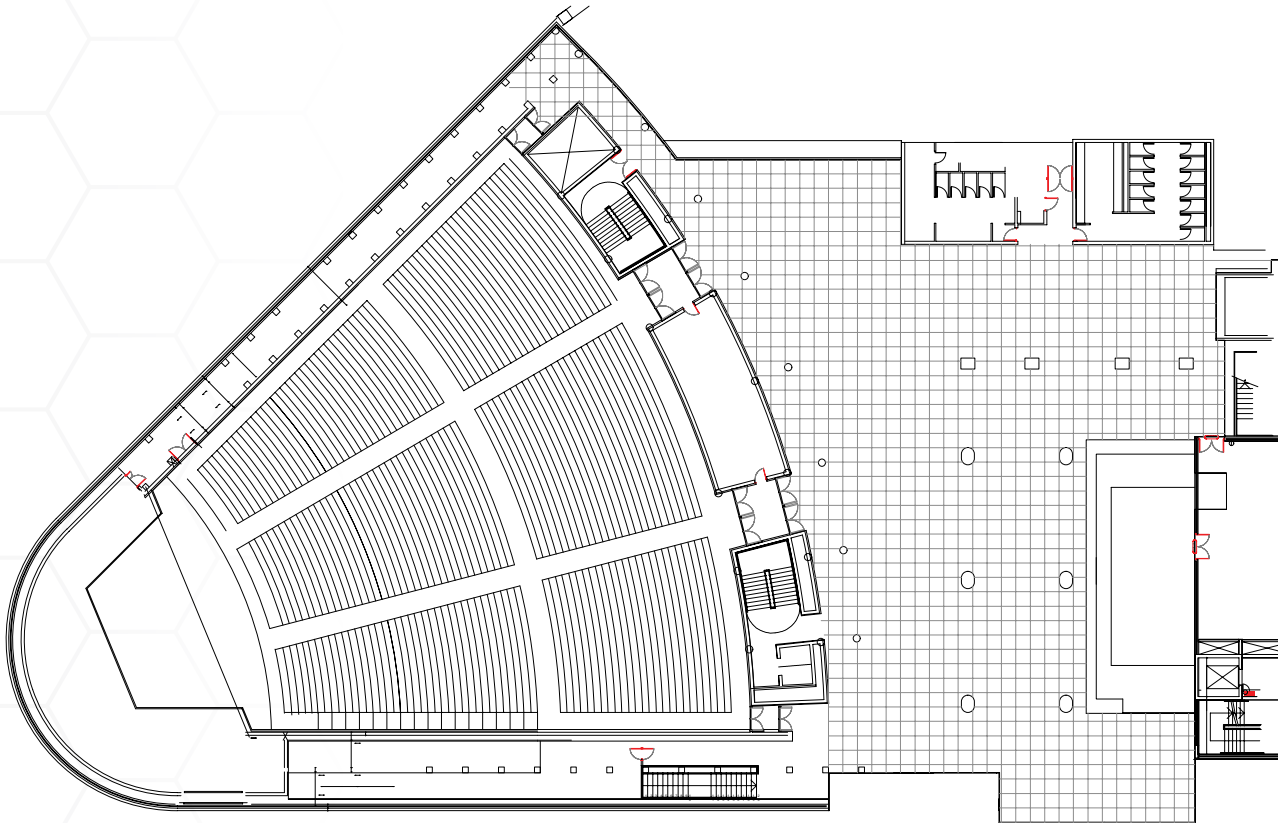
## CTICC | AUDITORIUM 1 PROJECTION SCREENS

The fixed-frame screens can be custom-built and applied in various formats (additional). The different screens are:

- Default when ordered with audio-visual Type 1: 8 m x 4.5 m with front projection cloth
- Other additional options could be Type 2: 8 m x 5 m with rear projection cloth (one-off)
- Other additional options could be Type 3: 4.5 m x 3 m with front projection cloth (one-off)



# CTICC 1 AUDITORIUM 1 FOYER

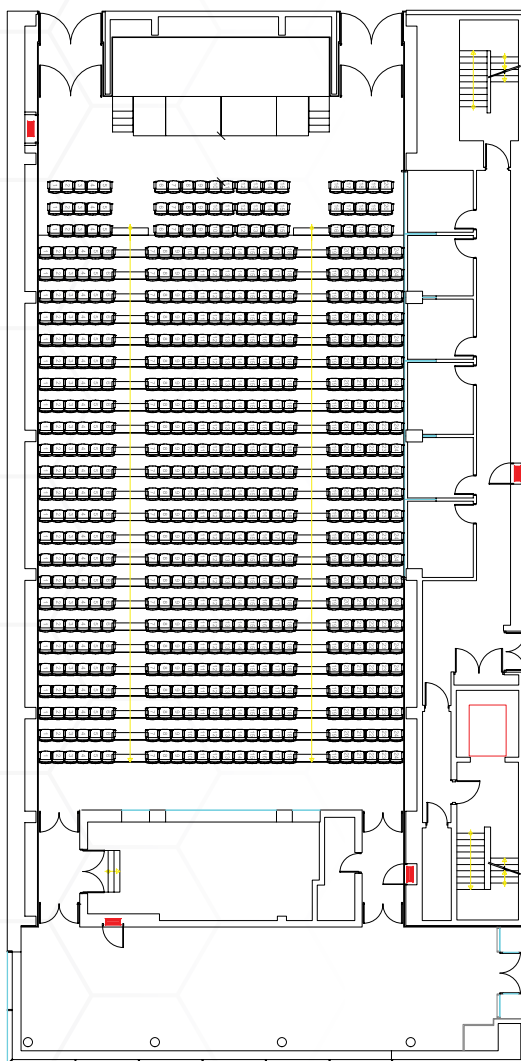


## CTICC 1 AUDITORIUM 1 FOYER

Length	13.6 m (at its narrowest point)
Width	40 m
Total area	700 m <sup>2</sup>
Height	3.5 m
Doors: Front-of-house	N/A
Air-conditioning	Automatic
Light intensity	0% or 100% (pre-sets)
Light facilities	Downlights
Outside broadcasting van connection	No, but can be arranged
Large power	None
Small power	16 A
Cocktail-style capacity	650
Carpets	Standard

# CTICC 1 AUDITORIUM 2

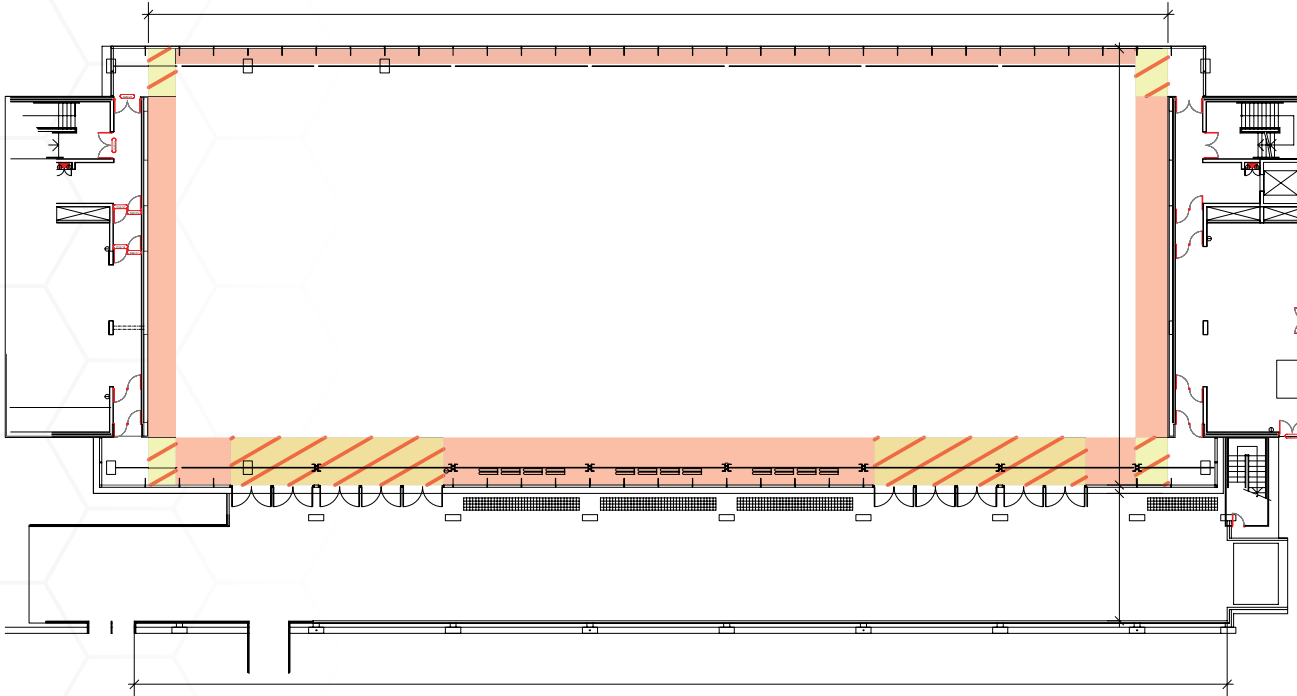
This venue is situated off the CTICC's Strelitzia Conservatory, which can be booked for registration, refreshments, and networking.



## AUDITORIUM 2 SPECIFICATIONS

<b>Length</b>	31 m
<b>Width</b>	15.8 m
<b>Total area</b>	490 m <sup>2</sup>
<b>Height</b>	8 m
<b>Doors: Front-of-house</b>	Width: 2 m Height: 2.1 m
<b>Air-conditioning</b>	Automatic
<b>Light intensity</b>	0% or 100% (pre-sets)
<b>Light facilities</b>	Two fixed flybars located in the ceiling
<b>Access loading/unloading</b>	From gallery
<b>Outside broadcasting van connection</b>	No, but can be arranged
<b>Audio-visual (when ordered)</b>	Hardwired infrastructure available when ordered with audio-visual, digital switcher, 2 branded laptops, LED lectern, two multi-skilled technicians
<b>Large power</b>	200 A bulk supply 3-phase
<b>Small power</b>	16 A single phase
<b>Stage</b>	Neoprene underneath 22 mm shutter board or plywood Front stage and steps
<b>Stage dimensions</b>	36.72 m <sup>2</sup>
<b>Screen</b>	One built into venue: 7.2 m x 4.8 m
<b>Sound system (when ordered with audio-visual)</b>	Two table-top microphones One lectern microphone
<b>Translation booths</b>	Five
<b>Projection room</b>	One
<b>Data projector</b>	9 000 ANSI Lumen Data Projector with a long-throw lens
<b>Seating</b>	Numbered in chronological order
<b>Theatre-style capacity</b>	612
<b>Carpets</b>	Standard

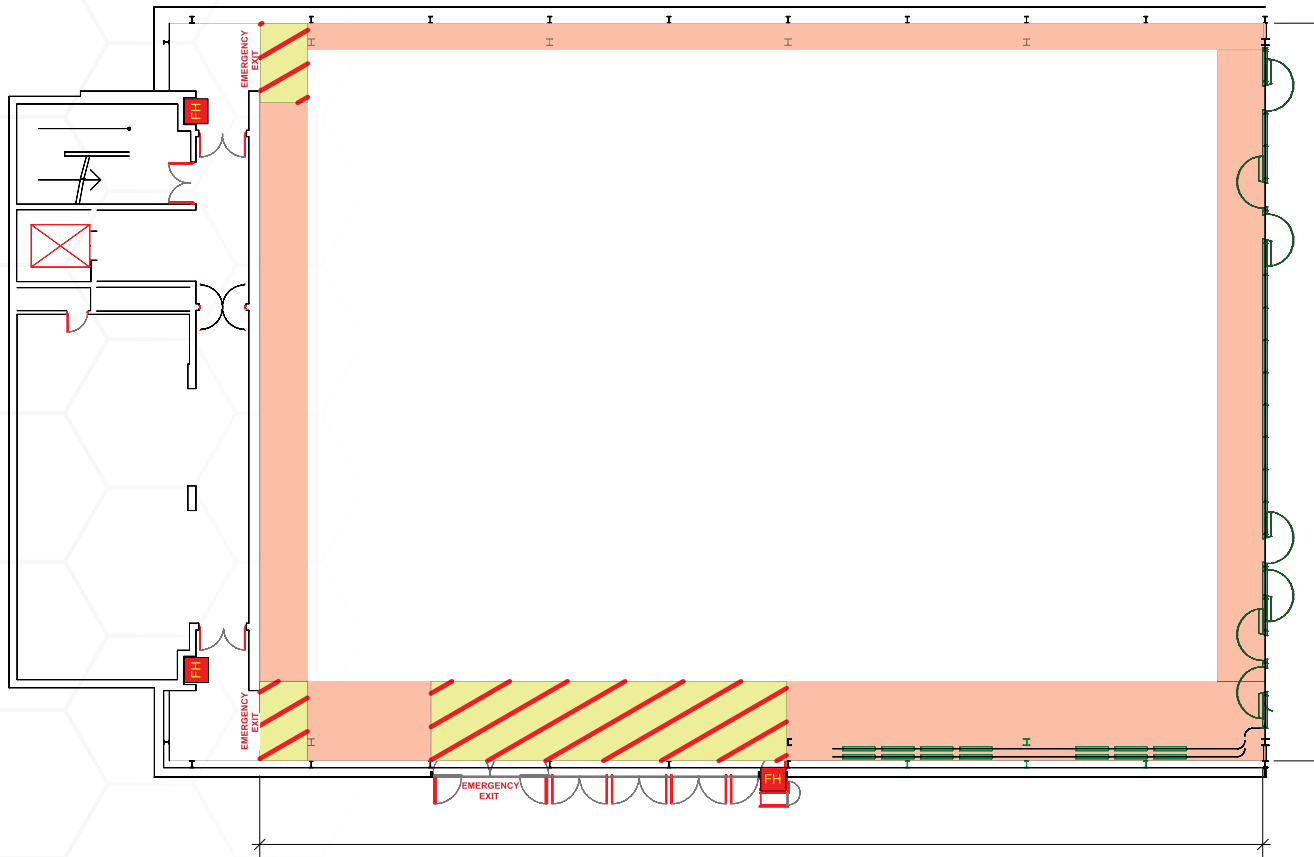
# CTICC 1 FULL BALLROOM



## CTICC 1 FULL BALLROOM

<b>Length</b>	67 m
<b>Width</b>	28 m
<b>Total area</b>	1 876 m <sup>2</sup>
<b>Height</b>	8 m
<b>Doors: Front-of-house</b>	Width: 2.2 m Height: 2.2 m
<b>Air-conditioning</b>	Automatic
<b>Light intensity</b>	0% or 100% (pre-sets)
<b>Light facilities</b>	Downlights
<b>Access loading/unloading</b>	Walter Sisulu Avenue
<b>Outside broadcasting van connection</b>	Available upon prior arrangement
<b>Audio-visual</b>	Available from CTICC's preferred service providers
<b>Large power</b>	Bulk supply 250 Amp/125 Amp 3-phase
<b>Small power</b>	16 Amp
<b>Theatre-style capacity</b>	1 980
<b>Classroom-style capacity</b>	1 296
<b>Banquet-style capacity</b>	1 300*
<b>Banquet buffet-style capacity</b>	1 020*
<b>Cocktail-style capacity</b>	1 500
<b>Carpets</b>	Standard

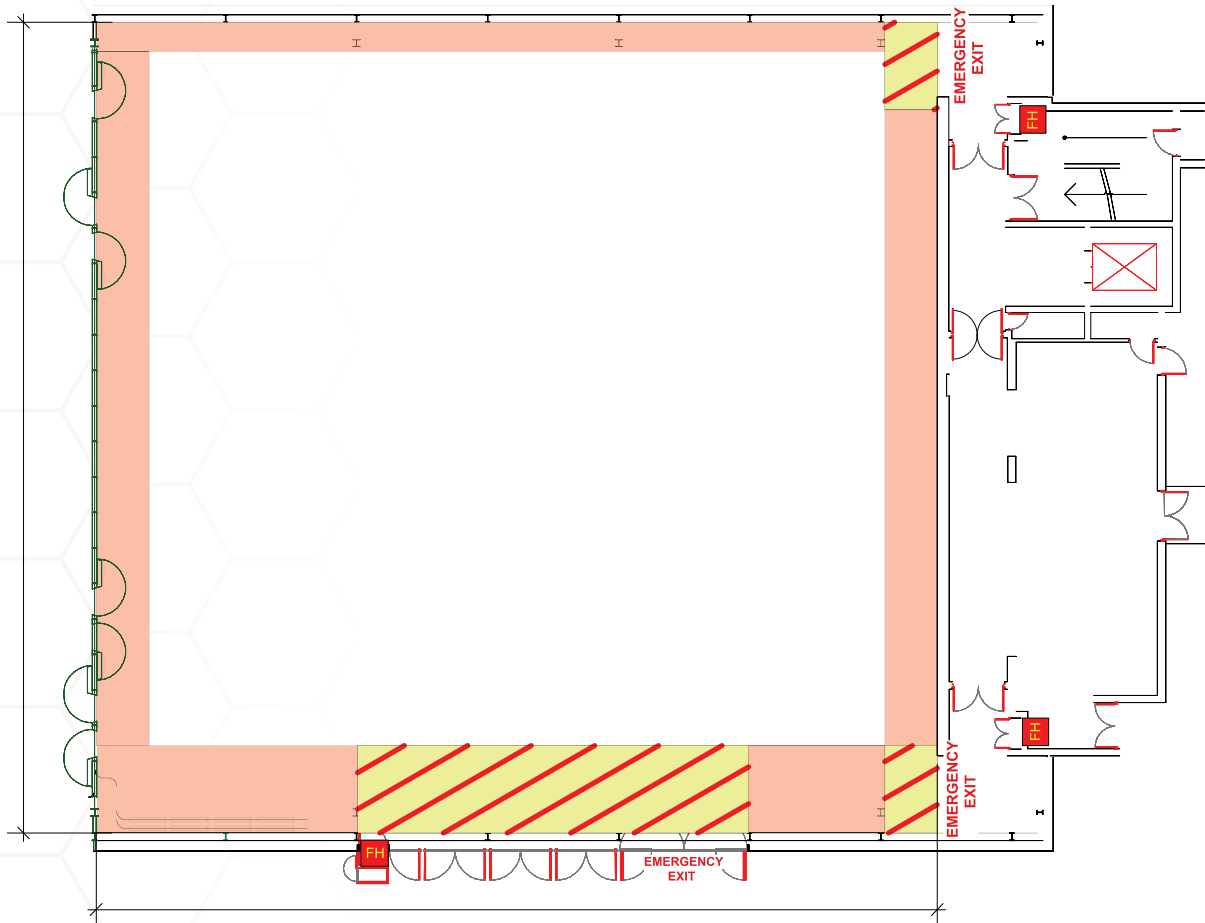
# CTICC 1 BALLROOM EAST



## CTICC 1 BALLROOM EAST

<b>Length</b>	38 m
<b>Width</b>	28 m
<b>Total area</b>	1 064 m <sup>2</sup>
<b>Height</b>	8 m
<b>Doors: Front-of-house</b>	Width: 2.2 m Height: 2.2 m
<b>Air-conditioning</b>	Automatic
<b>Light intensity</b>	0% or 100% (pre-sets)
<b>Light facilities</b>	Downlights
<b>Access loading/unloading</b>	Walter Sisulu Avenue
<b>Outside broadcasting van connection</b>	Available upon prior arrangement
<b>Audio-visual</b>	Available from CTICC's preferred service providers
<b>Large power</b>	Bulk supply 250 A/125 A 3-phase
<b>Small power</b>	16 A
<b>Theatre-style capacity</b>	1 080
<b>Classroom-style capacity</b>	790
<b>Banquet-style capacity</b>	740*
<b>Banquet buffet-style capacity</b>	540*
<b>Cocktail-style capacity</b>	770
<b>Carpets</b>	Standard

# CTICC 1 BALLROOM WEST



## CTICC 1 BALLROOM EAST

Length	29 m
Width	28 m
Total area	812 m <sup>2</sup>
Height	8 m
Doors: Front-of-house & Service	Width: 2.2 m Height: 2.2 m
Air-conditioning	Automatic
Light intensity	0% or 100% (pre-sets)
Light facilities	Downlights
Access loading/unloading	Walter Sisulu Avenue
Outside broadcasting van connection	Available upon prior arrangement
Audio-visual	Available from CTICC's preferred service providers
Large power	None (63A and 125A available from CTICC's preferred supplier)
Small power	16 A
Theatre-style capacity	840
Classroom-style capacity	528
Banquet-style capacity	540
Banquet buffet-style capacity	430
Cocktail-style capacity	625
Carpets	Standard
Rigging point allowance (rigging point available on request)	250 kg per point

# CTICC 1 BOARDROOM



## CTICC 1 BOARDROOM

Length	9.3 m
Width	7.9 m
Total area	73 m <sup>2</sup>
Height	3.3 m
Doors: Front-of-house and Service	1.2 m x 2.2 m
Air-conditioning	Automatic
Light intensity	0% or 100% (pre-sets)
Light facilities	Downlights
Audio-visual	Screen, projector, audio, two LCD screens (one on either side of the projection screen), seven projection and power points, support available with the on-site package – available from the CTICC's preferred service provider.
Description	Boardroom
Boardroom-style capacity	20
Carpets	Standard
Large power	None (63A and 125A available from CTICC's preferred supplier)
Small power	16 A
Theatre-style capacity	840
Classroom-style capacity	528
Banquet-style capacity	540
Banquet buffet-style capacity	430
Cocktail-style capacity	625
Carpets	Standard
Rigging point allowance (rigging point available on request)	250 kg per point

# CTICC 1 EXHIBITION VENUES

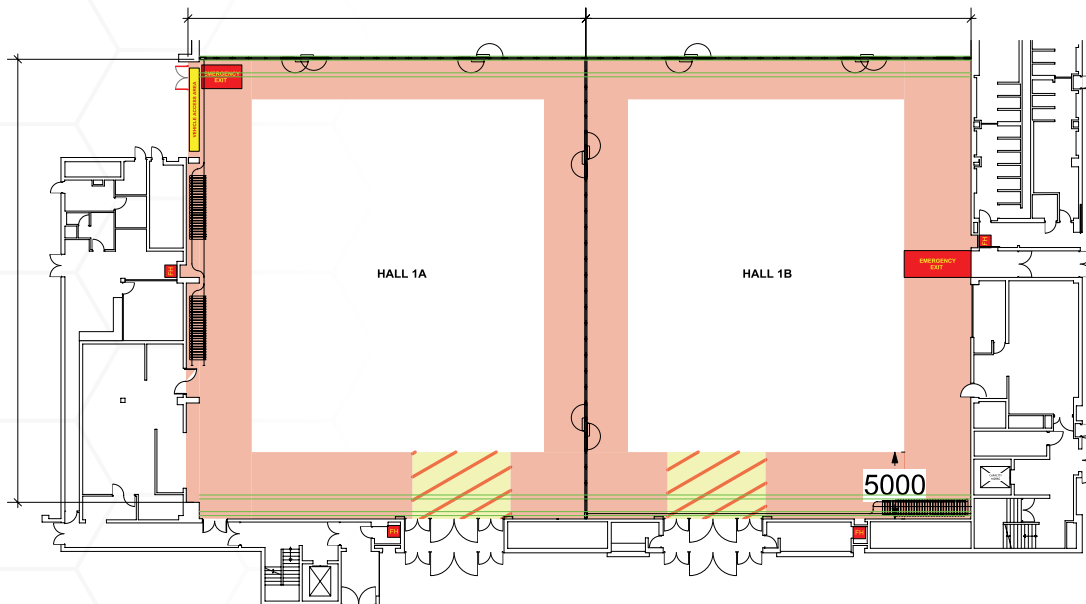


# CTICC 1 EXHIBITION VENUES

VENUE	AREA	WIDTH X LENGTH
Hall 1	2 029 m <sup>2</sup>	34.5 m x 58.7 m
Hall 1A	1 032 m <sup>2</sup>	29.9 m x 34.5 m
Hall 1B	997 m <sup>2</sup>	28.9 m x 34.5 m
Hall 2	2 118 m <sup>2</sup>	33.3 m x 63.6 m
Hall 3	2 258 m <sup>2</sup>	33.3 m x 67.8 m
Hall 4A	2 982 m <sup>2</sup>	41.7 m x 71.5 m
Hall 4B	1 267 m <sup>2</sup>	18.1 m x 70 m



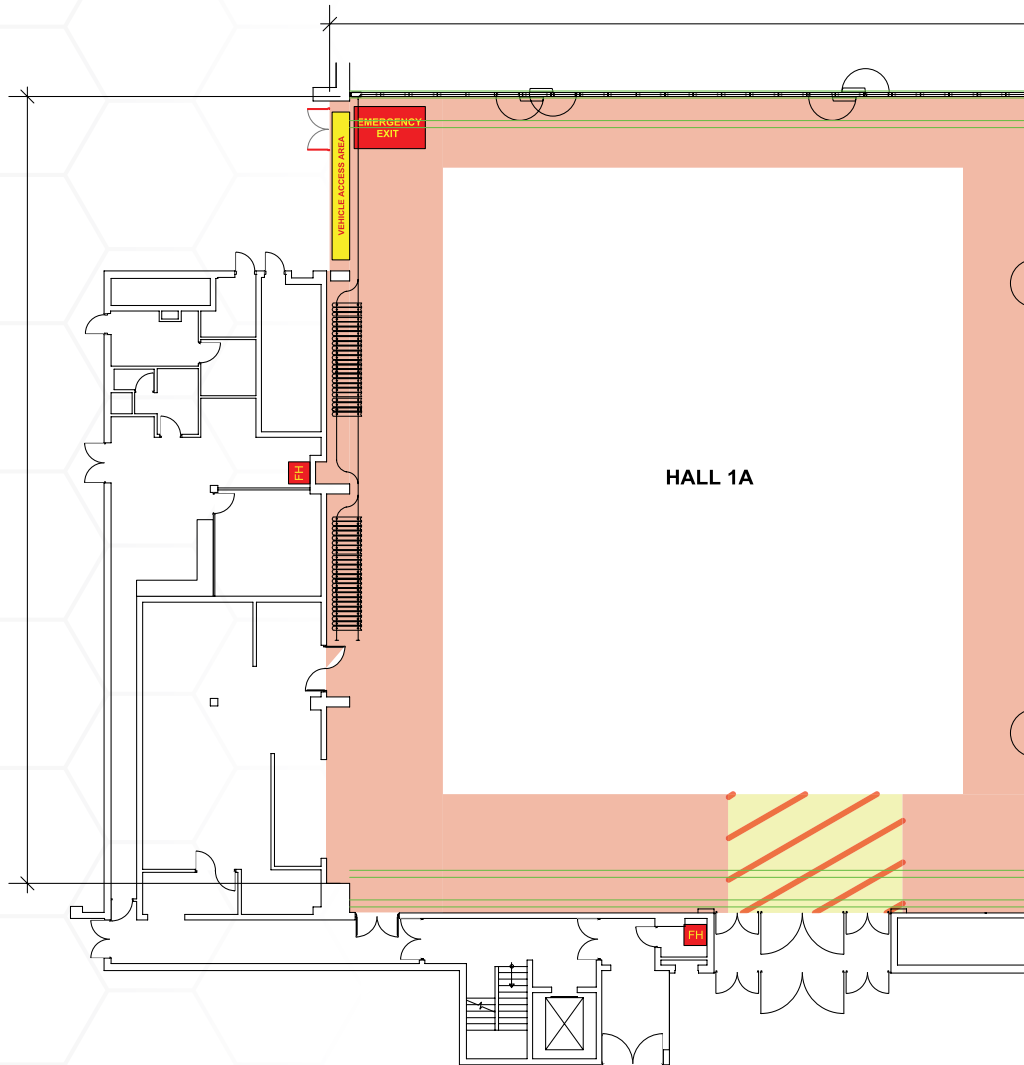
# CTICC 1 EXHIBITION HALL 1



## CTICC 1 EXHIBITION HALL 1

<b>Length</b>	58.7 m
<b>Width</b>	34.5 m
<b>Total area</b>	2 029 m <sup>2</sup>
<b>Height</b>	10 m to 18 m
<b>Doors: Service</b>	D7C/016: 7.2 m (wide) x 5.3 m (high)
<b>Floor loading</b>	1 500 kg/m <sup>2</sup> (15 kN/m <sup>2</sup> )
<b>Air-conditioning</b>	Automatic
<b>Light intensity</b>	0% or 100% (pre-sets)
<b>Light facilities</b>	Fluorescents and downlights
<b>Access loading/unloading</b>	Moveable doors, access from Marshalling Yard
<b>Facility trenches</b>	In the floor every 4.5 m
<b>Facility trench content</b>	Power points
<b>Telephone/data points</b>	Available through the ICT Department
<b>Water/drainage/compressed airline</b>	Water/drainage available
<b>Outside broadcasting van connection</b>	Available upon prior arrangement
<b>Audio-visual</b>	Available from CTICC's preferred service providers
<b>Large power</b>	Bulk supply: 400 A 3-phase 125 A 3-phase 63 A 3-phase
<b>Small power</b>	32 A 3-phase
<b>Hanging nodes/bars</b>	Max weight of 600 kg per node Up to 3 000 kg per structural beam
<b>Theatre-style capacity</b>	1 950
<b>Classroom-style capacity</b>	1 500
<b>Banquet-style capacity</b>	1 550
<b>Cocktail-style capacity</b>	1 550
<b>Exhibition booth capacity</b>	150
<b>Kiosk</b>	Two
<b>Carpets</b>	Not included, but can be arranged

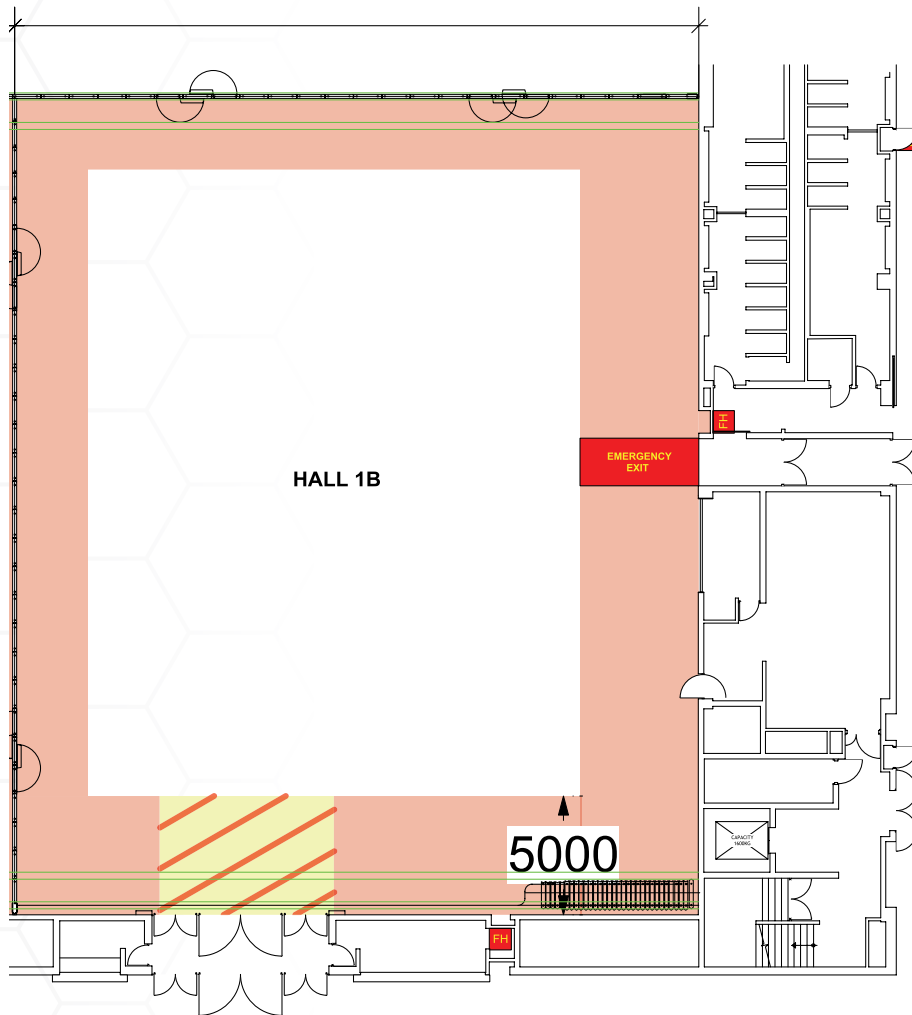
# CTICC 1 EXHIBITION HALL 1A



## EXHIBITION HALL 1A SPECIFICATIONS

<b>Length</b>	29.9 m
<b>Width</b>	34.5 m
<b>Total area</b>	1 032 m <sup>2</sup>
<b>Height</b>	10 m to 18 m
<b>Doors: Service</b>	D7C/016: 7.2 m (wide) x 5.3 m (high)
<b>Floor loading</b>	1 500 kg/m <sup>2</sup> (15 kN/m <sup>2</sup> )
<b>Air-conditioning</b>	Automatic
<b>Light intensity</b>	0% or 100% (pre-sets)
<b>Light facilities</b>	Fluorescents and downlights
<b>Access loading/unloading</b>	From Marshalling Yard
<b>Facility trenches</b>	In the floor every 4.5 m
<b>Facility trench content</b>	Power points
<b>Telephone/data points</b>	Available through the ICT Department
<b>Water/drainage/compressed airline</b>	Water/drainage available
<b>Outside broadcasting van connection</b>	Available upon prior arrangement
<b>Audio-visual</b>	Available from CTICC's preferred service providers
<b>Large power</b>	Bulk supply: 400 A 3-phase 125 A 3-phase 63 A 3-phase
<b>Small power</b>	32 A 3-phase
<b>Hanging nodes/bars</b>	Max weight 600 kg per node Up to 3 000 kg per structural beam
<b>Theatre-style capacity</b>	1 000
<b>Classroom-style capacity</b>	770
<b>Banquet-style capacity</b>	800
<b>Banquet buffet-style capacity</b>	520
<b>Cocktail-style capacity</b>	800
<b>Exhibition booth capacity</b>	60
<b>Satellite kitchen</b>	One
<b>Carpets</b>	Not included, but can be arranged

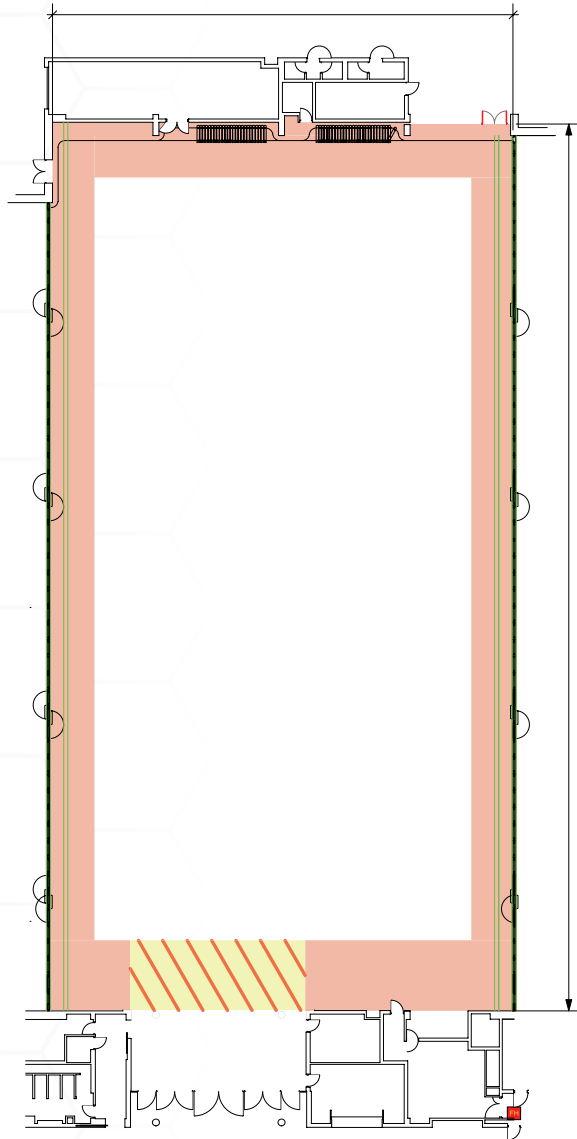
# CTICC 1 EXHIBITION HALL 1B



## EXHIBITION HALL 1B SPECIFICATIONS

<b>Length</b>	34.5 m
<b>Width</b>	28.9 m
<b>Total area</b>	997 m <sup>2</sup>
<b>Height</b>	10 m to 18 m
<b>Doors: Service</b>	D7C/028: 7.2 m (wide) x 5.3 m (high)
<b>Floor loading</b>	1 500 kg/m <sup>2</sup> (15 kN/m <sup>2</sup> )
<b>Air-conditioning</b>	Automatic
<b>Light intensity</b>	0% or 100% (pre-sets)
<b>Light facilities</b>	Fluorescents and downlights
<b>Access loading/unloading</b>	Marshalling Yard via Hall 1A or Hall 2 subject to availability
<b>Facility trenches</b>	In the floor every 4.5 m
<b>Facility trench content</b>	Power points
<b>Telephone/data points</b>	Available through the ICT Department
<b>Water/drainage/compressed airline</b>	Water/drainage available
<b>Outside broadcasting van connection</b>	Available upon prior arrangement
<b>Audio-visual</b>	Available from CTICC's preferred service providers
<b>Large power</b>	Bulk supply: 400 A 3-phase 125 A 3-phase 63 A 3-phase
<b>Small power</b>	32 A 3-phase
<b>Hanging nodes/bars</b>	Max weight 600 kg per node Up to 3 000 kg per structural beam
<b>Theatre-style capacity</b>	1 000
<b>Classroom-style capacity</b>	730
<b>Banquet-style capacity</b>	750
<b>Banquet buffet-style capacity</b>	500
<b>Cocktail-style capacity</b>	750
<b>Exhibition booth capacity</b>	50
<b>Kiosk/hatch</b>	One
<b>Carpets</b>	Not included, but can be arranged

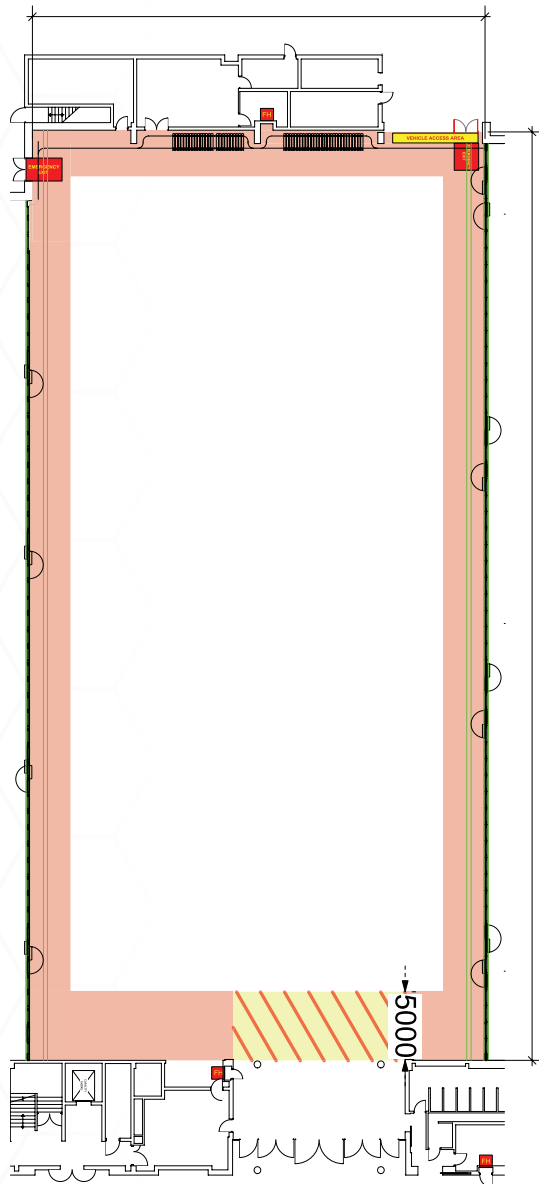
# CTICC 1 EXHIBITION HALL 2



## EXHIBITION HALL 2 SPECIFICATIONS

<b>Length</b>	63.6 m
<b>Width</b>	33.3 m
<b>Total area</b>	2 118 m <sup>2</sup>
<b>Height</b>	10 m to 18 m
<b>Doors: Service</b>	D7C/028: 7.2 m (wide) x 5.3 m (high)
<b>Floor loading</b>	3 000 kg/m <sup>2</sup> (30 kN/m <sup>2</sup> )
<b>Air-conditioning</b>	Automatic
<b>Light intensity</b>	0% or 100% (pre-sets)
<b>Light facilities</b>	Fluorescents and downlights
<b>Access loading/unloading</b>	Marshalling Yard
<b>Facility trenches</b>	In the floor every 4.5 m
<b>Facility trench content</b>	Power points
<b>Telephone/data points</b>	Available through the ICT Department
<b>Water/drainage/compressed airline</b>	Water/drainage available
<b>Outside broadcasting van connection</b>	Available upon prior arrangement
<b>Audio-visual</b>	Available from CTICC's preferred service providers
<b>Large power</b>	Bulk supply: 400 A 3-phase 125 A 3-phase 63 A 3-phase
<b>Small power</b>	32 A 3-phase
<b>Hanging nodes/bars</b>	Max weight 600 kg per node Up to 3 000 kg per structural beam
<b>Theatre-style capacity</b>	950
<b>Classroom-style capacity</b>	730
<b>Banquet-style capacity</b>	750
<b>Banquet buffet-style capacity</b>	460
<b>Cocktail-style capacity</b>	750
<b>Exhibition booth capacity</b>	50
<b>Kiosk</b>	One
<b>Carpets</b>	Not included, but can be arranged

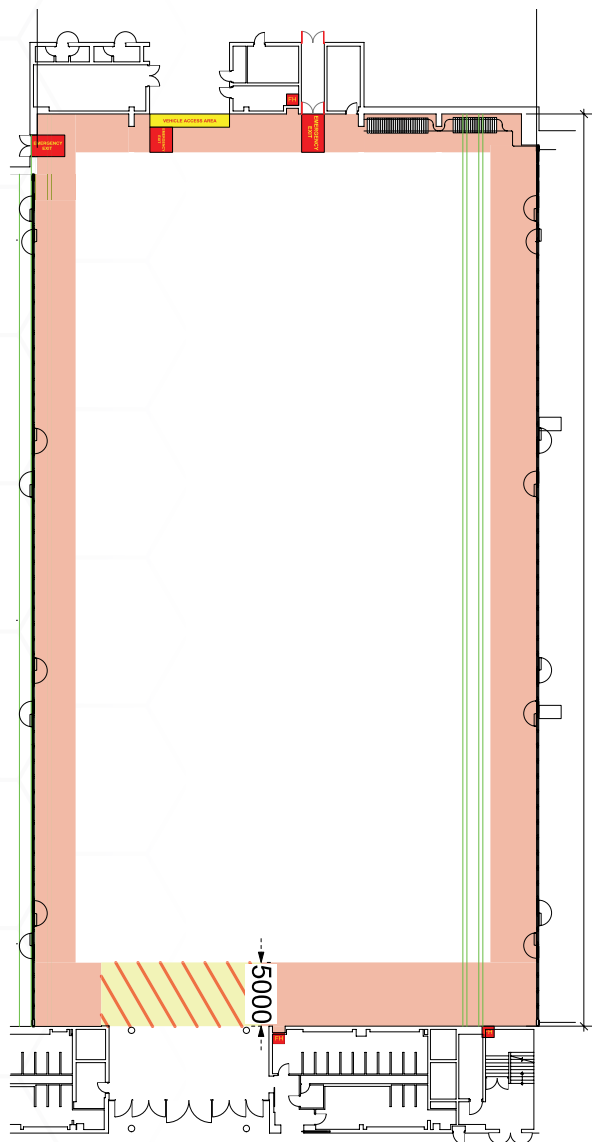
# CTICC 1 EXHIBITION HALL 3



## EXHIBITION HALL 3 SPECIFICATIONS

<b>Length</b>	67.8 m
<b>Width</b>	33.3 m
<b>Total area</b>	2 258 m <sup>2</sup>
<b>Height</b>	10 m to 18 m
<b>Doors: Service</b>	D7C/040: 7.2 m (wide) x 5.3 m (high)
<b>Floor loading</b>	3 000 kg/m <sup>2</sup> (30 kN/m <sup>2</sup> )
<b>Air-conditioning</b>	Automatic
<b>Light intensity</b>	0% or 100% (pre-sets)
<b>Light facilities</b>	Fluorescents and downlights
<b>Access loading/unloading</b>	Marshalling Yard
<b>Facility trenches</b>	In the floor every 4.5 m
<b>Facility trench content</b>	Power points
<b>Telephone/data points</b>	Available through the ICT Department
<b>Water/drainage/compressed airline</b>	Water/drainage available
<b>Outside broadcasting van connection</b>	Available upon prior arrangement
<b>Audio-visual</b>	Available from CTICC's preferred service providers
<b>Large power</b>	Bulk supply: 400 A 3-phase 125 A 3-phase 63 A 3-phase
<b>Small power</b>	32 A 3-phase
<b>Hanging nodes/bars</b>	Max weight 600 kg per node Up to 3 000 kg per structural beam
<b>Theatre-style capacity</b>	2 200
<b>Classroom-style capacity</b>	1 690
<b>Banquet-style capacity</b>	1 800
<b>Banquet buffet-style capacity</b>	1 200
<b>Cocktail-style capacity</b>	1 700
<b>Exhibition booth capacity</b>	141
<b>Kiosk</b>	One
<b>Carpets</b>	Not included, but can be arranged

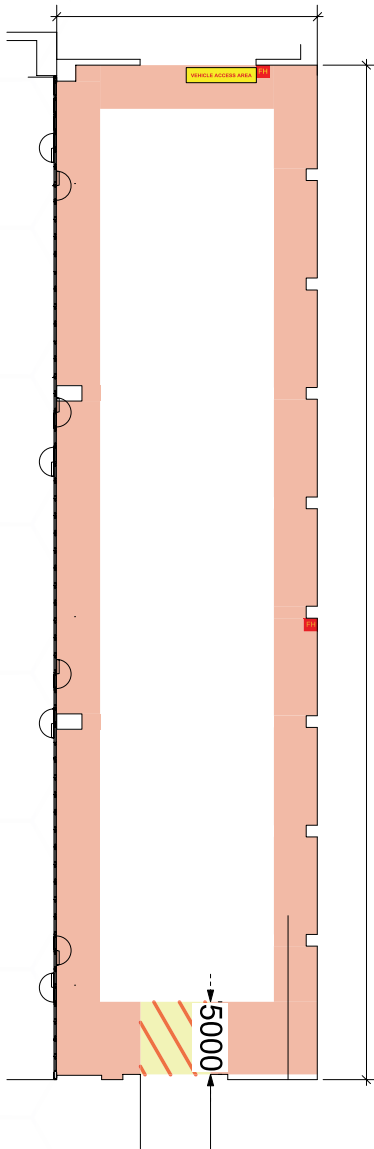
# CTICC 1 EXHIBITION HALL 4A



## EXHIBITION HALL 4A SPECIFICATIONS

<b>Length</b>	71.5 m
<b>Width</b>	41.7 m
<b>Total area</b>	2 982 m <sup>2</sup>
<b>Height</b>	10 m to 18 m
<b>Doors: Service</b>	D7C/050: 7.2 m (wide) x 5.3 m (high)
<b>Floor loading</b>	1 500 kg/m <sup>2</sup> (15 kN/m <sup>2</sup> )
<b>Air-conditioning</b>	Automatic
<b>Light intensity</b>	0% or 100% (pre-sets)
<b>Light facilities</b>	Fluorescents and downlights
<b>Access loading/unloading</b>	Marshalling Yard
<b>Facility trenches</b>	In the floor every 4.5 m
<b>Facility trench content</b>	Power points
<b>Telephone/data points</b>	Available through the ICT Department
<b>Water/drainage/compressed airline</b>	Water/drainage available
<b>Outside broadcasting van connection</b>	Available upon prior arrangement
<b>Audio-visual</b>	Available from CTICC's preferred service providers
<b>Large power</b>	Bulk supply: 400 A 3-phase 125 A 3-phase 63 A 3-phase
<b>Small power</b>	32 A 3-phase
<b>Hanging nodes/bars</b>	Max weight 600 kg per node Up to 3 000 kg per structural beam
<b>Theatre-style capacity</b>	2 400
<b>Classroom-style capacity</b>	1 850
<b>Banquet-style capacity</b>	2 000
<b>Banquet buffet-style capacity</b>	1 530
<b>Cocktail-style capacity</b>	1 900
<b>Exhibition booth capacity</b>	186
<b>Kiosk</b>	None
<b>Carpets</b>	Not included, but can be arranged

# CTICC 1 EXHIBITION HALL 4B



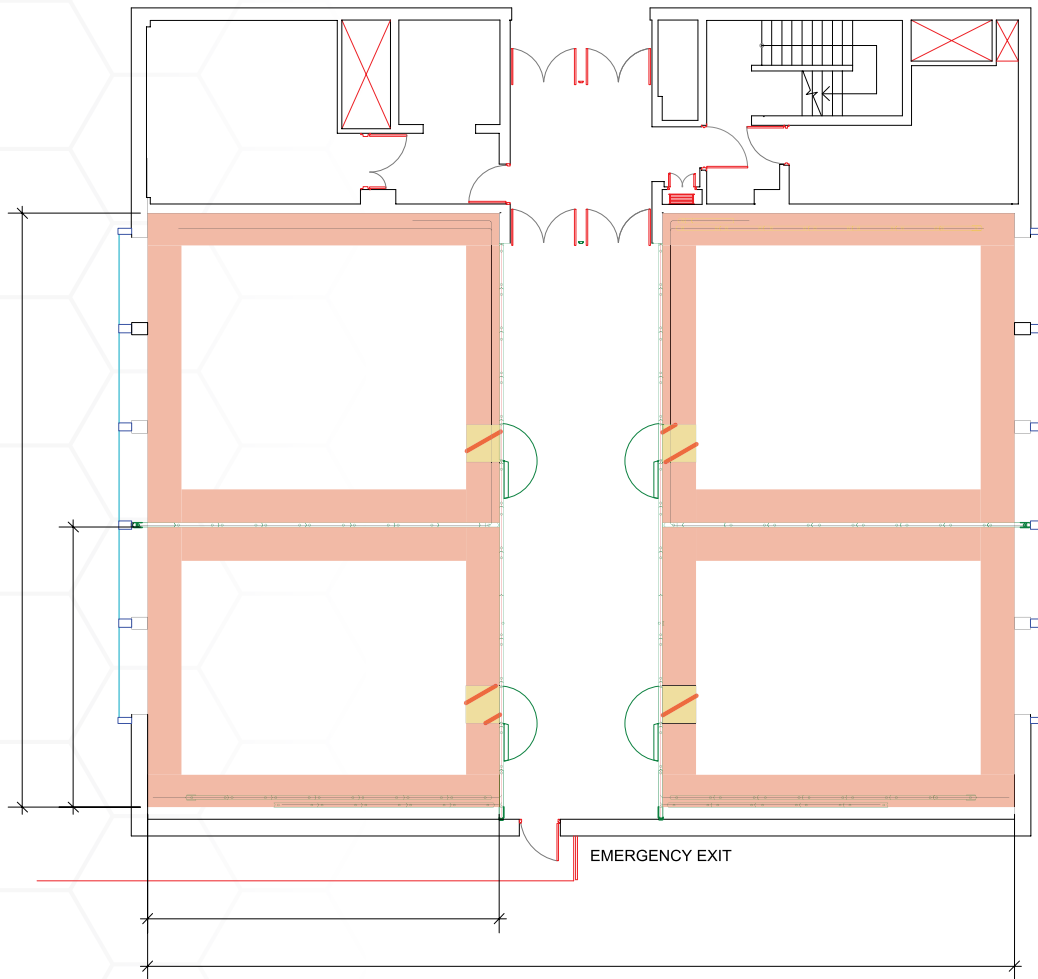
## EXHIBITION HALL 4B SPECIFICATIONS

<b>Length</b>	70 m
<b>Width</b>	18.1 m
<b>Total area</b>	1 267 m <sup>2</sup>
<b>Height</b>	9 m
<b>Doors: Front-of-house</b>	1.61 m x 2.32 m
<b>Doors: Service</b>	7.98 m x 5.90 m
<b>Floor loading</b>	1 500 kg/m <sup>2</sup> (15 kN/m <sup>2</sup> )
<b>Air-conditioning</b>	Automatic
<b>Light intensity</b>	0% or 100% (pre-sets)
<b>Light facilities</b>	Fluorescents and downlights
<b>Access loading/unloading</b>	Load in via ramp directly outside the Marshalling Yard
<b>Facility trenches</b>	In the floor every 4.5 m
<b>Facility trench content</b>	Power points
<b>Telephone/data points</b>	Available through the ICT Department
<b>Water/drainage/compressed airline</b>	Water/drainage available
<b>Outside broadcasting van connection</b>	Available upon prior arrangement
<b>Audio-visual</b>	Available from CTICC's preferred service providers
<b>Large power</b>	Bulk supply: 400 A 3-phase 125 A 3-phase
<b>Small power</b>	63 A 3-phase
<b>Hanging nodes/bars</b>	32 A 3-phase Max weight 250 kg per node Up to 1 500 kg per structural beam
<b>Theatre-style capacity</b>	1 000
<b>Classroom-style capacity</b>	770
<b>Banquet-style capacity</b>	800
<b>Banquet buffet-style capacity</b>	520
<b>Cocktail-style capacity</b>	800
<b>Exhibition booth capacity</b>	70
<b>Carpets</b>	Not included, but can be arranged



# CTICC 1 MEETING ROOMS

# CTICC 1 MEETING ROOMS 1.40 & 1.60



## CTICC 1 MEETING ROOMS 1.40 & 1.60 SPECIFICATIONS

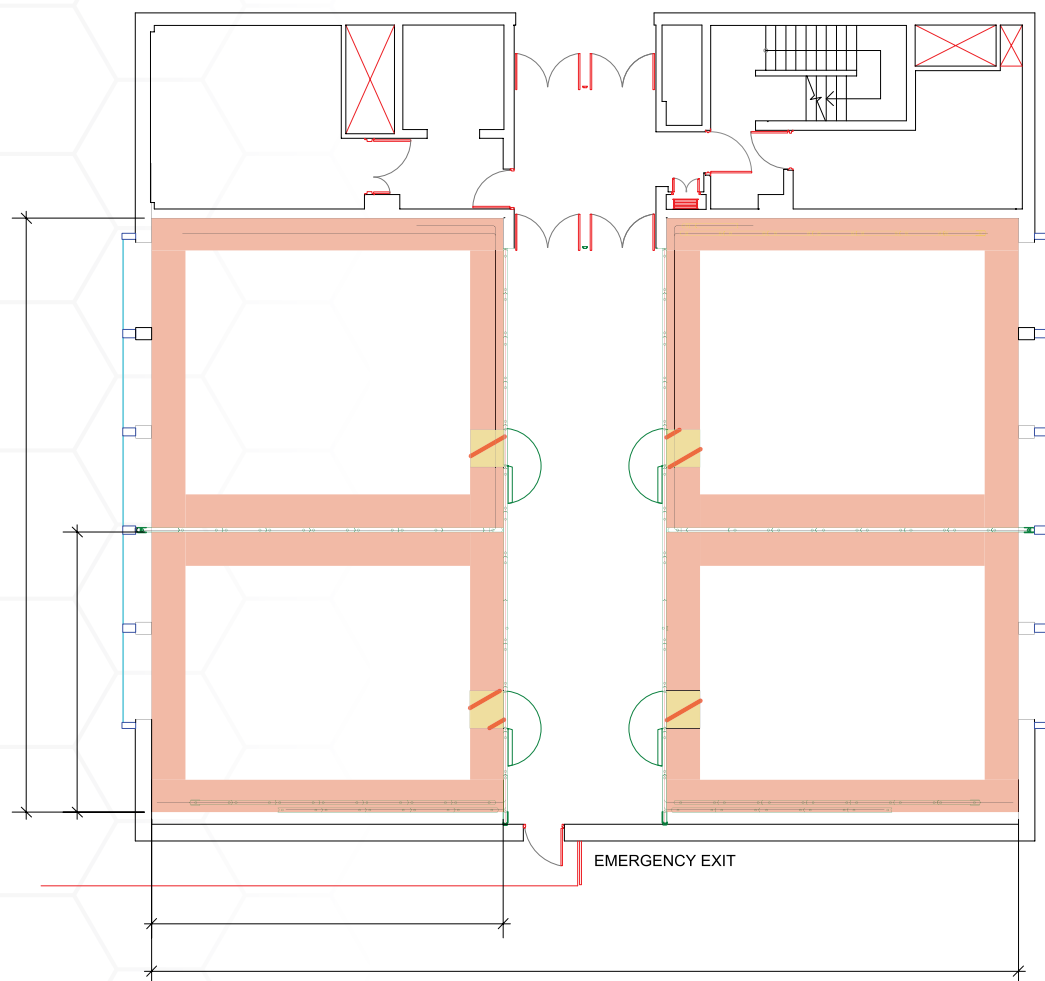
<b>Length</b>	23.4 m
<b>Width</b>	16 m
<b>Total area</b>	375 m <sup>2</sup>
<b>Height</b>	4 m
<b>Doors: Front-of-house &amp; Service</b>	Width: 3.75 m Height: 2.2 m
<b>Air-conditioning</b>	Automatic
<b>Light intensity</b>	0% or 100% (pre-sets)
<b>Light facilities</b>	Downlights
<b>Audio-visual</b>	Available from CTICC's preferred service providers
<b>Description</b>	These rooms can be divided into four smaller areas with a maximum capacity of 60 in theatre-style seating
<b>Overlooks</b>	Conservatories
<b>Theatre-style capacity</b>	330
<b>Classroom-style capacity</b>	220
<b>U-shape-style capacity</b>	69
<b>Banquet-style capacity</b>	220
<b>Banquet buffet-style capacity</b>	180
<b>Cocktail-style capacity</b>	300
<b>Carpets</b>	Standard

## CTICC 1 MEETING ROOM PROJECTION SCREENS

Each breakout room has one electronic projection screen installed – in other words, four in each breakout block on the first floor. The details of these electronic screens are as follows:

- **Type 2:** 3.65 m x 3.04 m (viewable surface) – on the first floor.

# CTICC 1 MEETING ROOMS 2.40 & 2.60



## CTICC 1 MEETING ROOMS 1.40 & 1.60 SPECIFICATIONS

<b>Length</b>	23.4 m
<b>Width</b>	16 m
<b>Total area</b>	375 m <sup>2</sup>
<b>Height</b>	4 m
<b>Doors: Front-of-house &amp; Service</b>	Width: 3.75 m Height: 2.2 m
<b>Air-conditioning</b>	Automatic
<b>Light intensity</b>	0% or 100% (pre-sets)
<b>Light facilities</b>	Downlights
<b>Audio-visual</b>	Available from CTICC's preferred service providers
<b>Description</b>	These rooms can be divided into four smaller areas with a maximum capacity of 60 in theatre-style seating
<b>Overlooks</b>	Conservatories
<b>Theatre-style capacity</b>	330
<b>Classroom-style capacity</b>	220
<b>U-shape-style capacity</b>	69
<b>Banquet-style capacity</b>	220
<b>Banquet buffet-style capacity</b>	180
<b>Cocktail-style capacity</b>	300
<b>Carpets</b>	Standard

## CTICC 1 MEETING ROOM PROJECTION SCREENS

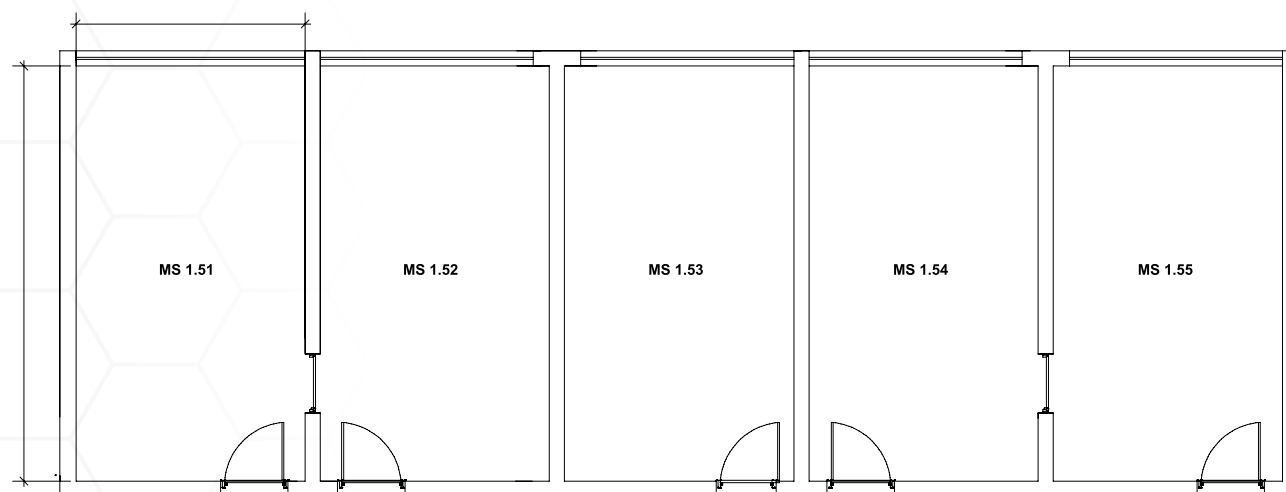
Each breakout room has one electronic projection screen installed – in other words, four in each breakout block on the first floor. The details of these electronic screens are as follows:

- **Type 2:** 3.65 m x 3.04 m (viewable surface) – on the first floor.

# CTICC 1 MEETING SUITES



# CTICC 1 MEETING SUITES 1.51 TO 1.55



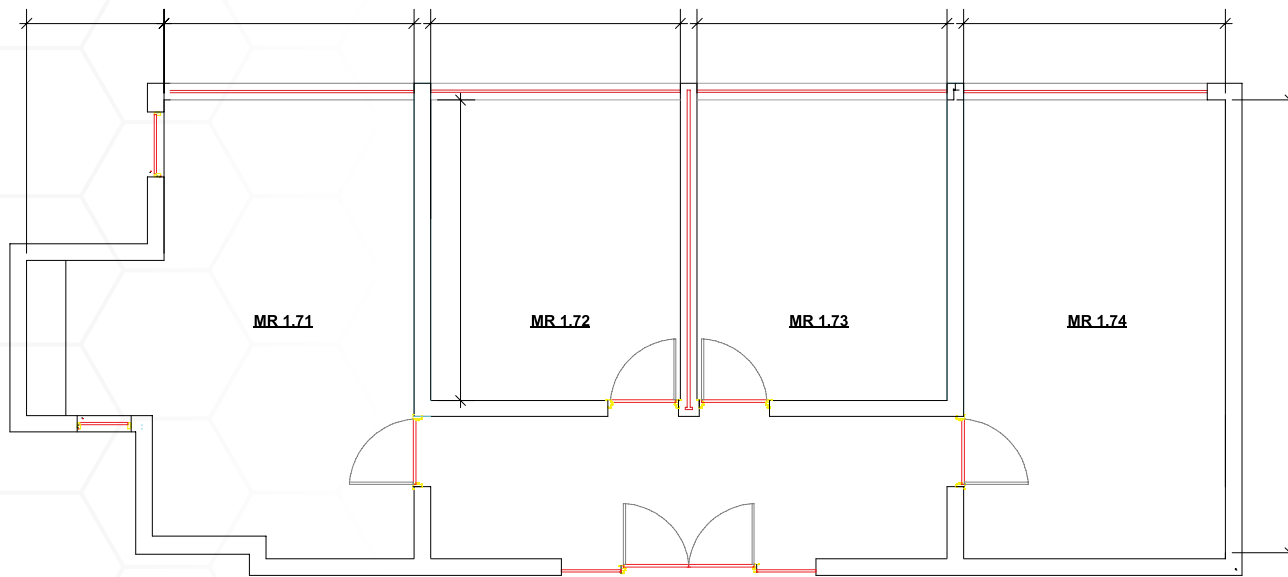
## CTICC 1 MEETING SUITES 1.51, 1.52, 1.53, 1.54 AND 1.55 SPECIFICATIONS

<b>Length</b>	7.9 m
<b>Width</b>	4.5 m
<b>Total area</b>	35 m <sup>2</sup>
<b>Height</b>	3.3 m
<b>Doors: Front-of-house &amp; Service</b>	Width: 3.75 m Height: 2.2 m
<b>Air-conditioning</b>	Automatic
<b>Light intensity</b>	0% or 100% (pre-sets)
<b>Light facilities</b>	Downlights (non-dimmable)
<b>Audio-visual</b>	Projector, screen, included in venue rental
<b>Description</b>	VIP Suite
<b>Overlooks</b>	Meeting suite 1.51 – 1.53 overlooks Exhibition Hall 2 Meeting suite 1.54 – 1.55 overlooks Exhibition Hall 3
<b>Theatre-style capacity</b>	24
<b>Classroom-style capacity</b>	18
<b>U-shape-style capacity</b>	15
<b>Boardroom-style capacity</b>	18
<b>Carpets</b>	Standard

\*Meeting Suite 1.51 interconnects with Meeting Suite 1.52

\*Meeting Suite 1.54 interconnects with Meeting Suite 1.55

# CTICC 1 MEETING SUITES 1.71 TO 1.74



## CTICC MEETING SUITE 1.71 SPECIFICATIONS

<b>Length</b>	7.9 m
<b>Width</b>	4.5 m
<b>Total area</b>	35 m <sup>2</sup>
<b>Height</b>	3.3 m
<b>Doors: Front-of-house &amp; Service</b>	Width: 3.75 m Height: 2.2 m
<b>Air-conditioning</b>	Automatic
<b>Light intensity</b>	0% or 100% (pre-sets)
<b>Light facilities</b>	Downlights (non-dimmable)
<b>Audio-visual</b>	Projector, screen, audio, and support available through CTICC's preferred service providers
<b>Description</b>	VIP Suite
<b>Overlooks</b>	Exhibition Hall 3
<b>Theatre-style capacity</b>	24
<b>Classroom-style capacity</b>	18
<b>U-shape-style capacity</b>	15
<b>Boardroom-style capacity</b>	18
<b>Carpets</b>	Standard

# CTICC 1 MEETING SUITES 1.71 TO 1.74

## CTICC MEETING SUITE 1.72 SPECIFICATIONS

<b>Length</b>	5.5 m
<b>Width</b>	4.5 m
<b>Total area</b>	24 m <sup>2</sup>
<b>Height</b>	3.3 m
<b>Doors: Front-of-house &amp; Service</b>	Width: 3.75 m Height: 2.2 m
<b>Air-conditioning</b>	Automatic
<b>Light intensity</b>	0% or 100% (pre-sets)
<b>Light facilities</b>	Downlights (non-dimmable)
<b>Audio-visual</b>	Projector, screen, audio, and support available through CTICC's preferred service provider
<b>Description</b>	VIP Suite
<b>Overlooks</b>	Exhibition Hall 3
<b>Theatre-style capacity</b>	24
<b>Classroom-style capacity</b>	18
<b>U-shape-style capacity</b>	15
<b>Boardroom-style capacity</b>	18
<b>Carpets</b>	Standard

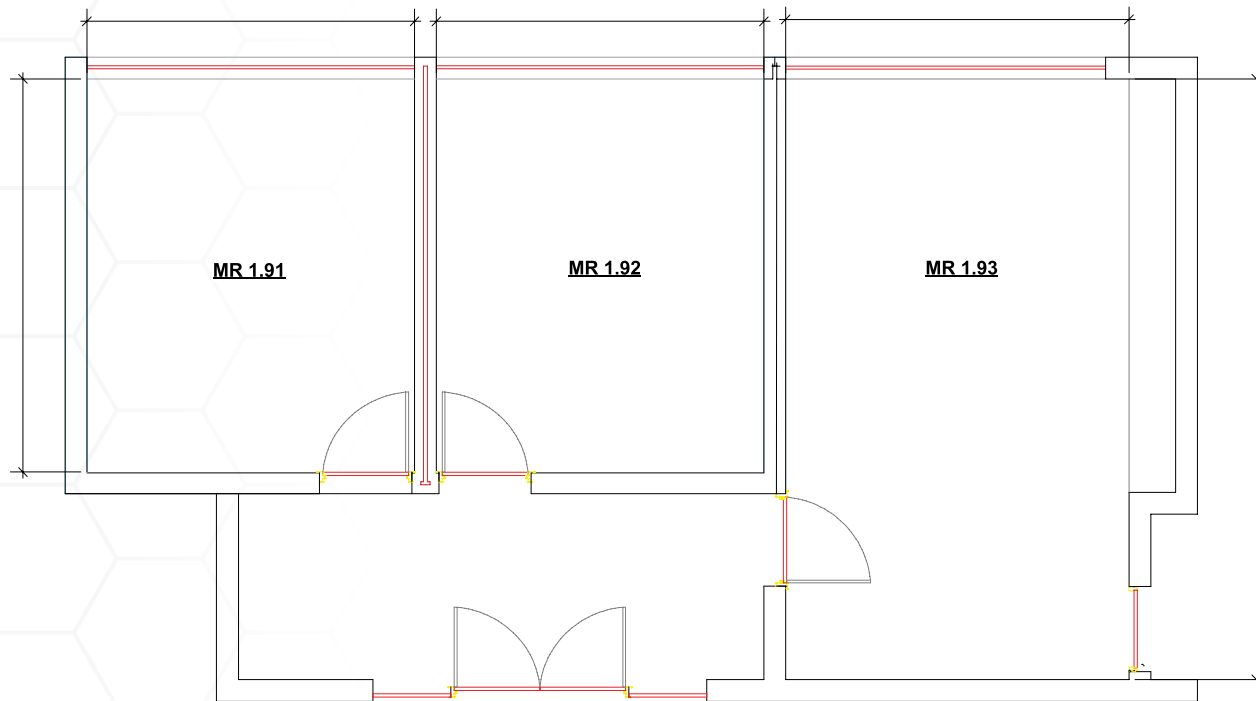
## CTICC MEETING SUITE 1.73 SPECIFICATIONS

<b>Length</b>	5.5 m
<b>Width</b>	4.5 m
<b>Total area</b>	24 m <sup>2</sup>
<b>Height</b>	3.3 m
<b>Doors: Front-of-house &amp; Service</b>	Width: 3.75 m Height: 2.2 m
<b>Air-conditioning</b>	Automatic
<b>Light intensity</b>	0% or 100% (pre-sets)
<b>Light facilities</b>	Downlights (non-dimmable)
<b>Audio-visual</b>	Projector, screen, audio, and support available through CTICC's preferred service provider
<b>Description</b>	VIP Suite
<b>Overlooks</b>	Exhibition Hall 3
<b>Theatre-style capacity</b>	24
<b>Classroom-style capacity</b>	18
<b>U-shape-style capacity</b>	15
<b>Boardroom-style capacity</b>	18
<b>Carpets</b>	Standard

## CTICC MEETING SUITE 1.74 SPECIFICATIONS

<b>Length</b>	7.9 m
<b>Width</b>	4.5 m
<b>Total area</b>	35 m <sup>2</sup>
<b>Height</b>	3.3 m
<b>Doors: Front-of-house &amp; Service</b>	Width: 3.75 m Height: 2.2 m
<b>Air-conditioning</b>	Automatic
<b>Light intensity</b>	0% or 100% (pre-sets)
<b>Light facilities</b>	Downlights (non-dimmable)
<b>Audio-visual</b>	Projector, screen, audio, and support available through CTICC's preferred service provider
<b>Description</b>	VIP Suite
<b>Overlooks</b>	Exhibition Hall 3
<b>Theatre-style capacity</b>	24
<b>Classroom-style capacity</b>	18
<b>U-shape-style capacity</b>	15
<b>Boardroom-style capacity</b>	18
<b>Carpets</b>	Standard

# CTICC 1 MEETING SUITES 1.91 - 1.93



## CTICC MEETING SUITE 1.91 SPECIFICATIONS

<b>Length</b>	5.5 m
<b>Width</b>	4.5 m
<b>Total area</b>	25 m <sup>2</sup>
<b>Height</b>	3.3 m
<b>Doors: Front-of-house &amp; Service</b>	Width: 3.75 m
	Height: 2.2 m
<b>Air-conditioning</b>	Automatic
<b>Light intensity</b>	0% or 100% (pre-sets)
<b>Light facilities</b>	Downlights (non-dimmable)
<b>Audio-visual</b>	Projector, screen, audio, and support available through CTICC's preferred service providers
<b>Description</b>	VIP Suite
<b>Overlooks</b>	Exhibition Hall 4A
<b>Theatre-style capacity</b>	24
<b>Classroom-style capacity</b>	18
<b>U-shape-style capacity</b>	15
<b>Boardroom-style capacity</b>	18
<b>Carpets</b>	Standard

# CTICC 1 MEETING SUITES 1.91 - 1.93

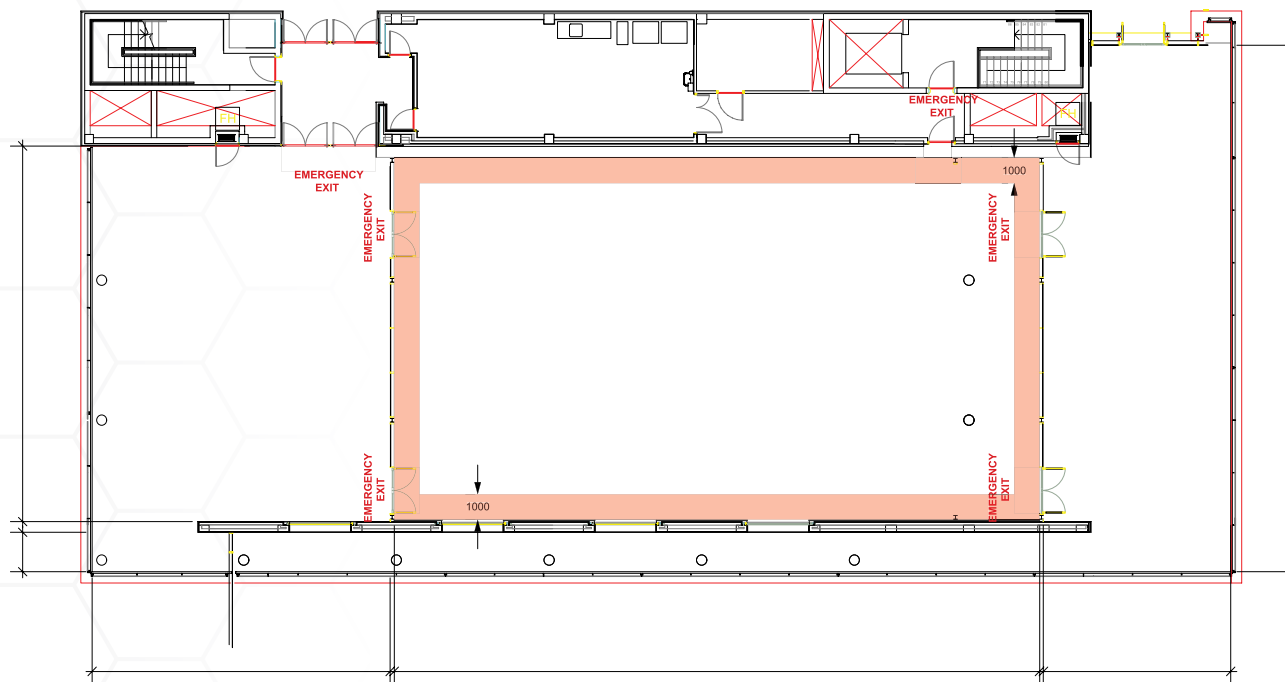
CTICC MEETING SUITE 1.92 SPECIFICATIONS	
<b>Length</b>	5.5 m
<b>Width</b>	4.5 m
<b>Total area</b>	25 m <sup>2</sup>
<b>Height</b>	3.3 m
<b>Doors: Front-of-house &amp; Service</b>	Width: 3.75 m
	Height: 2.2 m
<b>Air-conditioning</b>	Automatic
<b>Light intensity</b>	0% or 100% (pre-sets)
<b>Light facilities</b>	Downlights (non-dimmable)
<b>Audio-visual</b>	Projector, screen, audio, and support available through CTICC's preferred service providers
<b>Description</b>	VIP Suite
<b>Overlooks</b>	Exhibition Hall 4A
<b>Theatre-style capacity</b>	24
<b>Classroom-style capacity</b>	18
<b>U-shape-style capacity</b>	15
<b>Boardroom-style capacity</b>	18
<b>Carpets</b>	Standard

CTICC MEETING SUITE 1.93 SPECIFICATIONS	
<b>Length</b>	7.9 m
<b>Width</b>	4.5 m
<b>Total area</b>	35 m <sup>2</sup>
<b>Height</b>	3.3 m
<b>Doors: Front-of-house &amp; Service</b>	Width: 3.75 m
	Height: 2.2 m
<b>Air-conditioning</b>	Automatic
<b>Light intensity</b>	0% or 100% (pre-sets)
<b>Light facilities</b>	Downlights (non-dimmable)
<b>Audio-visual</b>	Projector, screen, audio, and support available through CTICC's preferred service provider
<b>Description</b>	VIP Suite with bathroom/shower and kitchenette
<b>Overlooks</b>	Exhibition Hall 4A
<b>Theatre-style capacity</b>	24
<b>Classroom-style capacity</b>	18
<b>U-shape-style capacity</b>	15
<b>Boardroom-style capacity</b>	18
<b>Carpets</b>	Standard



# CTICC 1 ROOF TERRACE

# CTICC 1 ROOF TERRACE ROOM



## CTICC 1 ROOF TERRACE ROOM

Length	25 m
Width	14.8 m
Total area	370 m <sup>2</sup>
Height	4.2 m
Doors: Front-of-house	Width: 3.75 m
Air-conditioning	Automatic
Light intensity	0% or 100% (pre-sets)
Light facilities	Downlights (dimnable)
Theatre-style capacity	380
Classroom-style capacity	220
Banquet-style capacity	190
Banquet buffet-style capacity	190
Cocktail-style capacity	250
U-shape-style capacity	69
Boardroom-style capacity	60
Carpets	Standard

## ROOF TERRACE FOYER | INSIDE

Length	15 m
Width	12 m
Total area	180 m <sup>2</sup>
Height	4.2 m

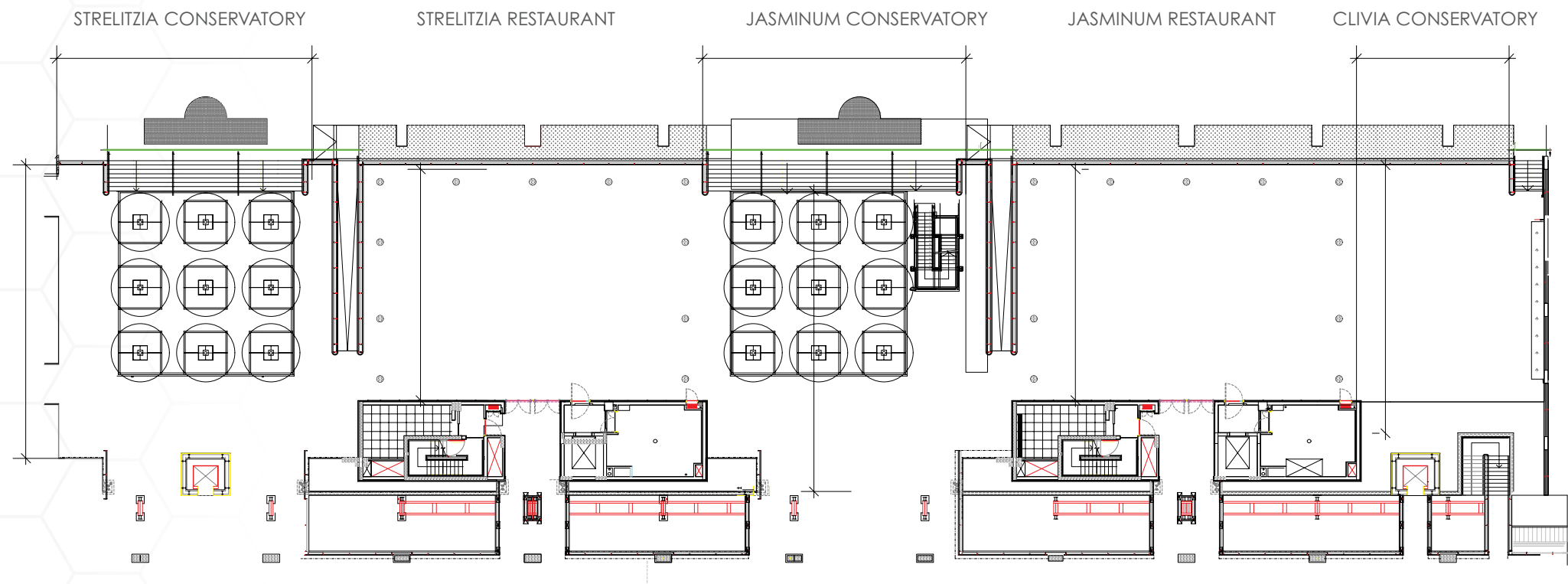
## ROOF TERRACE BALCONY | OUTSIDE

Length	20 m
Width	7 m
Total area	147 m <sup>2</sup>



# CTICC 1 DAY RESTAURANTS & CONSERVATORIES

# RESTAURANTS & CONSERVATORIES



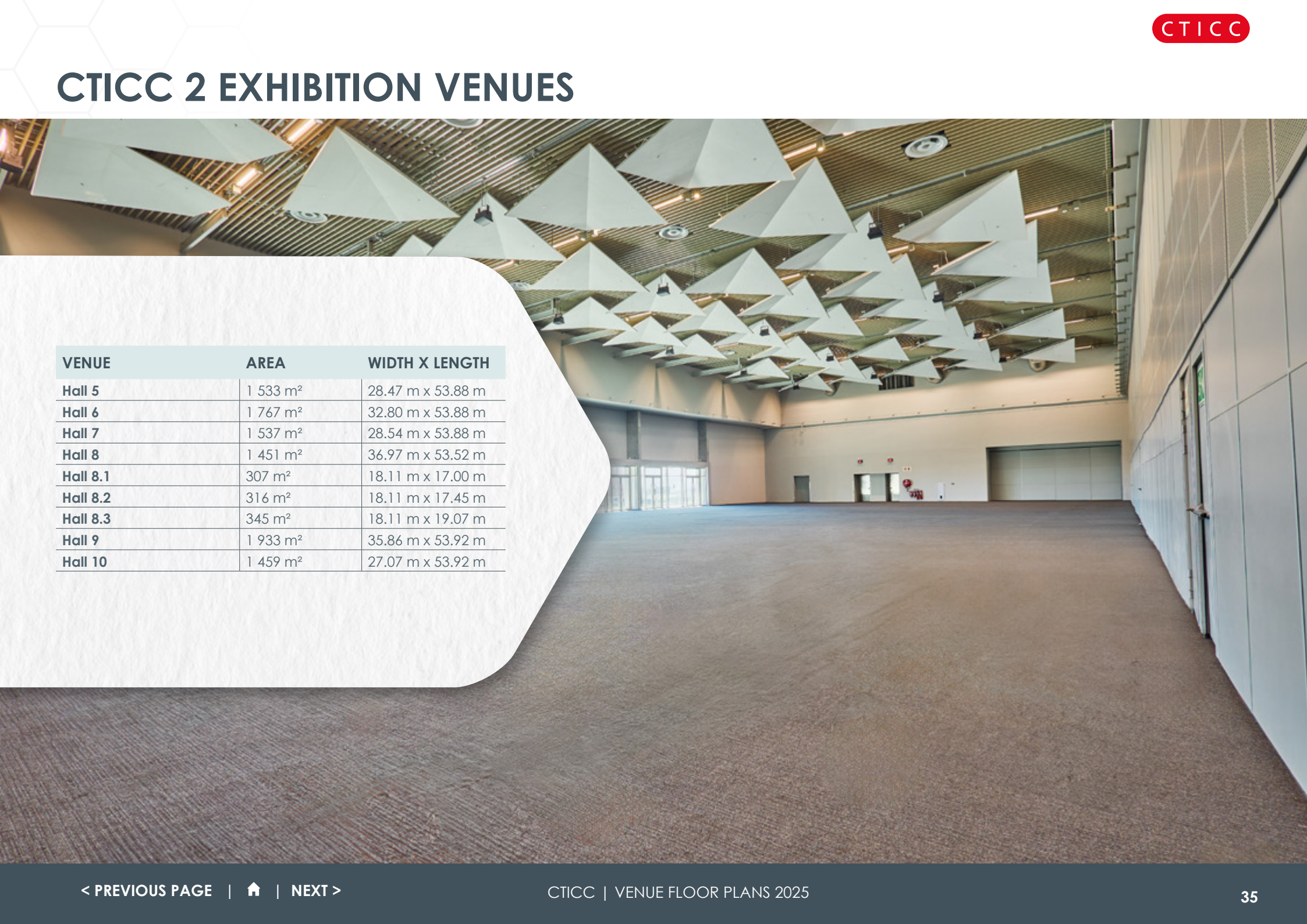
A photograph of a modern lounge area. In the foreground, a large, leafy tree stands on a light-colored tiled floor. To its right, a grey sectional sofa is positioned on a blue and white patterned rug. Two orange leather armchairs with metal frames are placed on either side of the sofa. A round, dark glass coffee table sits in front of the sofa. In the background, another orange leather sofa is visible, and a large glass wall offers a view of the outside. The scene is brightly lit with natural light.

# CTICC 2 VENUE SPECIFICATIONS



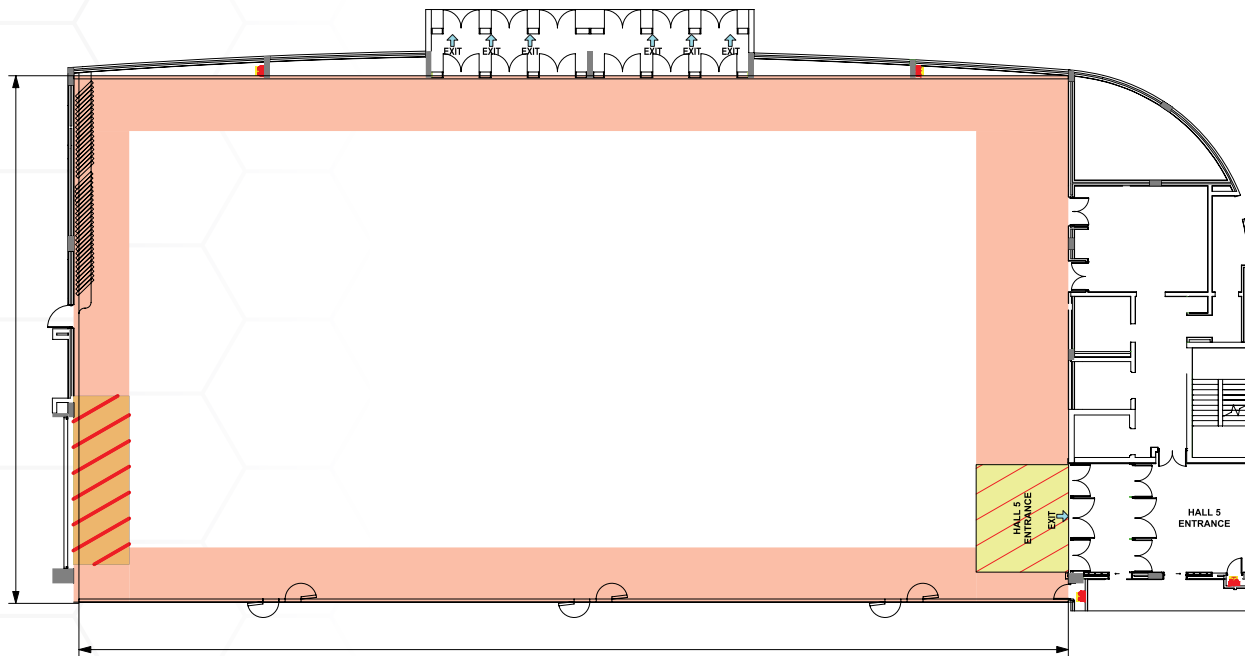
# CTICC 2 EXHIBITION VENUES

# CTICC 2 EXHIBITION VENUES



VENUE	AREA	WIDTH X LENGTH
Hall 5	1 533 m <sup>2</sup>	28.47 m x 53.88 m
Hall 6	1 767 m <sup>2</sup>	32.80 m x 53.88 m
Hall 7	1 537 m <sup>2</sup>	28.54 m x 53.88 m
Hall 8	1 451 m <sup>2</sup>	36.97 m x 53.52 m
Hall 8.1	307 m <sup>2</sup>	18.11 m x 17.00 m
Hall 8.2	316 m <sup>2</sup>	18.11 m x 17.45 m
Hall 8.3	345 m <sup>2</sup>	18.11 m x 19.07 m
Hall 9	1 933 m <sup>2</sup>	35.86 m x 53.92 m
Hall 10	1 459 m <sup>2</sup>	27.07 m x 53.92 m

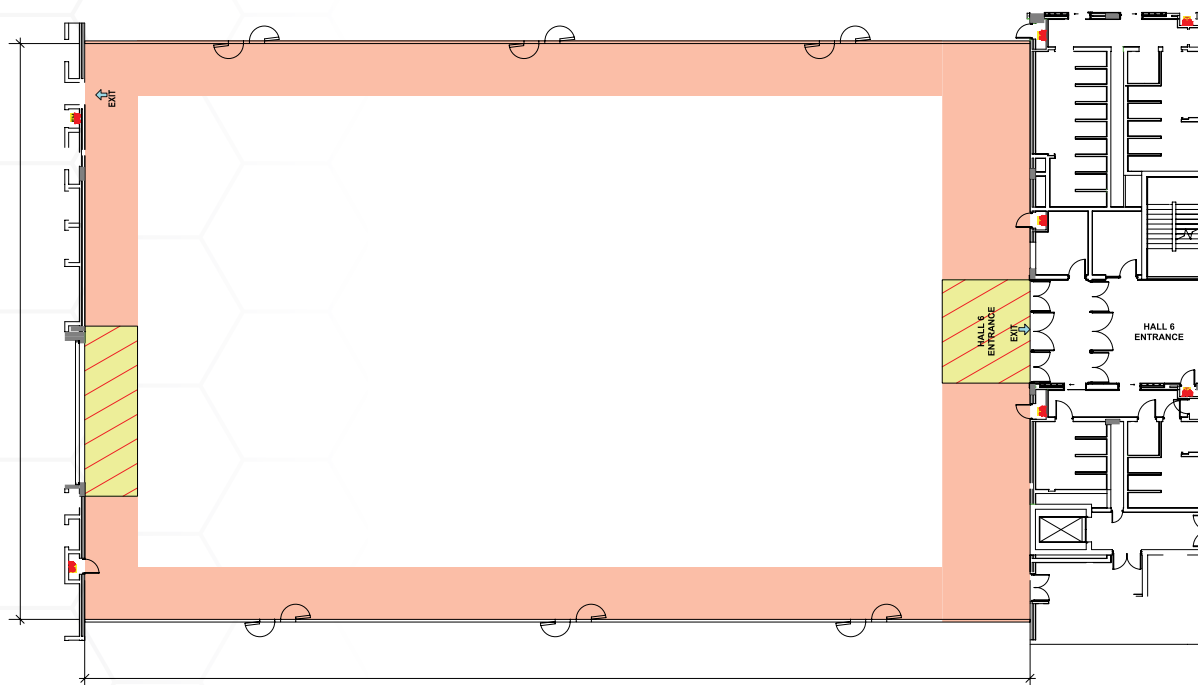
# CTICC 2 EXHIBITION HALL 5 | LEVEL 1



## CTICC 2 EXHIBITION HALL 5 | LEVEL 1

<b>Length</b>	53.88 m
<b>Width</b>	28.47 m
<b>Total area</b>	1 533 m <sup>2</sup>
<b>Height</b>	9 m to 12 m
<b>Doors</b>	Front-of-house
<b>Service door</b>	D7C/050: 7.2 m (wide) x 5.3 m (high)
<b>Floor loading</b>	2 000 kg/m <sup>2</sup> (30 kN/m <sup>2</sup> )
<b>Air-conditioning</b>	Automatic
<b>Light intensity</b>	0% or 30% or 70% or 100% (pre-sets)
<b>Light facilities</b>	0% or 30% or 70% or 100% LED lighting (non-dimmable)
<b>Access loading/unloading</b>	Marshalling Yard
<b>Facility trenches</b>	In the floor every 4.5 m
<b>Facility trench content</b>	Power points
<b>Telephone/data points</b>	Available through the ICT Department
<b>Water/drainage/compressed airline</b>	Water/drainage available
<b>Outside broadcasting van connection</b>	Available upon prior arrangement
<b>Large power</b>	Bulk supply: 400 A 3-phase 125 A 3-phase 63 A 3-phase
<b>Small power</b>	32 A 3-phase
<b>Audio-visual</b>	Available from CTICC's preferred service providers
<b>Theatre-style capacity</b>	1 387
<b>Classroom-style capacity</b>	1 050
<b>Banquet-style capacity</b>	720
<b>Cocktail-style capacity</b>	684
<b>Exhibition booth capacity</b>	65
<b>Carpets</b>	Hall is carpeted

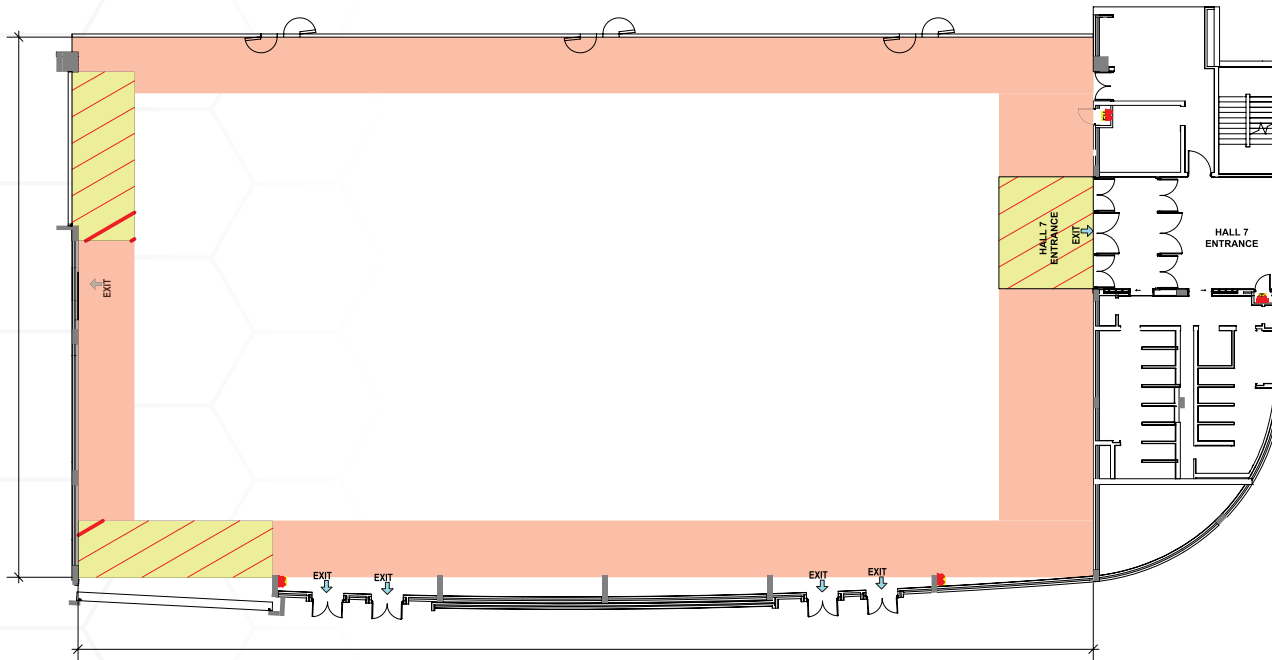
# CTICC 2 EXHIBITION HALL 6 | LEVEL 1



## CTICC 2 EXHIBITION HALL 6 | LEVEL 1

<b>Length</b>	53.88 m
<b>Width</b>	32.80 m
<b>Total area</b>	1 767 m <sup>2</sup>
<b>Height</b>	9 m to 12 m
<b>Doors</b>	Front-of-house
<b>Service door</b>	D7C/050: 7.2 m (wide) x 5.3 m (high)
<b>Floor loading</b>	2 000 kg/m <sup>2</sup> (30 kN/m <sup>2</sup> )
<b>Air-conditioning</b>	Automatic
<b>Light intensity</b>	0% or 30% or 70% or 100% (pre-sets)
<b>Light facilities</b>	0% or 30% or 70% or 100% LED lighting (non-dimmable)
<b>Access loading/unloading</b>	Marshalling Yard
<b>Facility trenches</b>	In the floor every 4.5 m
<b>Facility trench content</b>	Power points
<b>Telephone/data points</b>	Available through the ICT Department
<b>Water/drainage/compressed airline</b>	Water/drainage available
<b>Large power</b>	Bulk supply: 400 A 3-phase 125 A 3-phase 63 A 3-phase 32 A 3-phase
<b>Outside broadcasting van connection</b>	Can be made available by prior arrangement
<b>Audio-visual</b>	Available from CTICC's preferred service providers
<b>Theatre-style capacity</b>	1 722
<b>Classroom-style capacity</b>	1 260
<b>Banquet-style capacity</b>	840
<b>Cocktail-style capacity</b>	836
<b>Exhibition booth capacity</b>	92
<b>Carpets</b>	Hall is carpeted

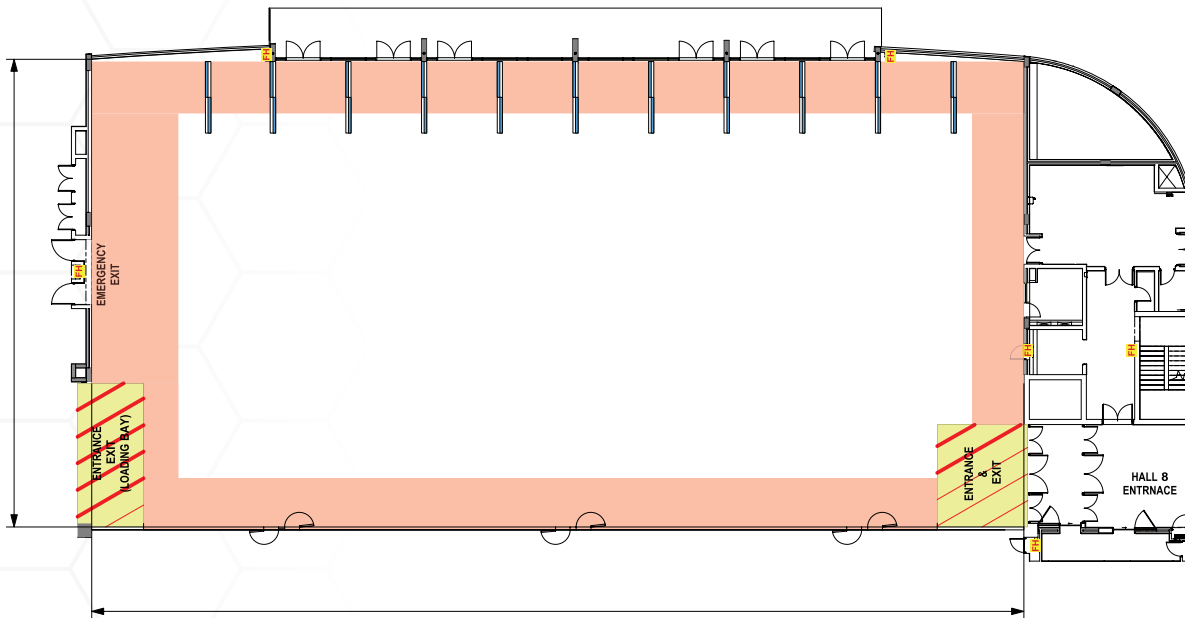
# CTICC 2 EXHIBITION HALL 7 | LEVEL 1



## CTICC 2 EXHIBITION HALL 7 | LEVEL 1

<b>Length</b>	53.88 m
<b>Width</b>	28.54 m
<b>Total area</b>	1 537 m <sup>2</sup>
<b>Height</b>	9 m to 12 m
<b>Doors</b>	Front-of-house
<b>Service door</b>	D7C/050: 7.2 m (wide) x 5.3 m (high)
<b>Floor loading</b>	2 000 kg/m <sup>2</sup> (30 kN/m <sup>2</sup> )
<b>Air-conditioning</b>	Automatic
<b>Light intensity</b>	0% or 30% or 70% or 100% (pre-sets)
<b>Light facilities</b>	0% or 30% or 70% or 100% LED lighting (non-dimmable)
<b>Access loading/unloading</b>	Marshalling Yard
<b>Facility trenches</b>	In the floor every 4.5 m
<b>Facility trench content</b>	Power points
<b>Telephone/data points</b>	Available through the ICT Department
<b>Water/drainage/compressed airline</b>	Water/drainage available
<b>Outside broadcasting van connection</b>	Available upon prior arrangement
<b>Large power</b>	Bulk supply: 400A 3-phase 125A 3-phase 63A 3-phase
<b>Small power</b>	32A 3-phase
<b>Audio-visual</b>	Available from CTICC's preferred service providers
<b>Theatre-style capacity</b>	1 386
<b>Classroom-style capacity</b>	1 050
<b>Banquet-style capacity</b>	720
<b>Cocktail-style capacity</b>	684
<b>Exhibition booth capacity</b>	60
<b>Carpets</b>	Hall is carpeted

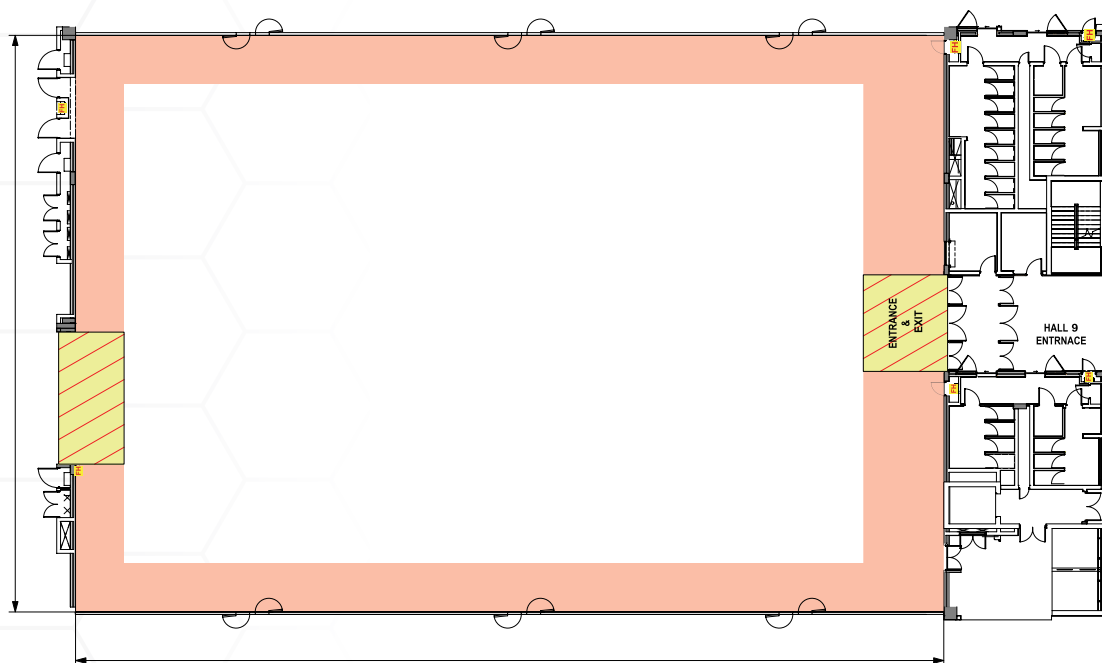
# CTICC 2 EXHIBITION HALL 8 | LEVEL 2



## CTICC 2 EXHIBITION HALL 8 | LEVEL 2

<b>Length</b>	53.92 m
<b>Width</b>	36.97 m
<b>Total area</b>	1 451 m <sup>2</sup>
<b>Height</b>	10 m to 12 m
<b>Subdivision:</b>	
<b>8.1</b>	313 m <sup>2</sup>
<b>8.2</b>	314 m <sup>2</sup>
<b>8.3</b>	352 m <sup>2</sup>
<b>Doors</b>	Front-of-house
<b>Service door</b>	D7C/050: 7.2 m (wide) x 5.3 m (high)
<b>Floor loading</b>	750 kg/m <sup>2</sup> (0.75 kN/m <sup>2</sup> )
<b>Air-conditioning</b>	Automatic
<b>Light intensity</b>	0% or 100% (pre-sets)
<b>Light facilities</b>	0% or 100% dimmable LED lighting
<b>Access loading/unloading</b>	Marshalling Yard
<b>Facility trenches</b>	In the floor every 4.5 m
<b>Facility trench content</b>	Power points Available through the ICT Department Water/drainage available Can be made available by prior arrangement
<b>Large power</b>	Bulk supply: 400 A 3-phase 125 A 3-phase 63 A 3-phase
<b>Small power</b>	32 A 3-phase
<b>Audio-visual</b>	Available from CTICC's preferred service providers
<b>Theatre-style capacity</b>	1 344
<b>Classroom-style capacity</b>	864
<b>Banquet-style capacity</b>	720
<b>Cocktail-style capacity</b>	648
<b>Exhibition booth capacity</b>	103
<b>Carpets</b>	Hall is carpeted

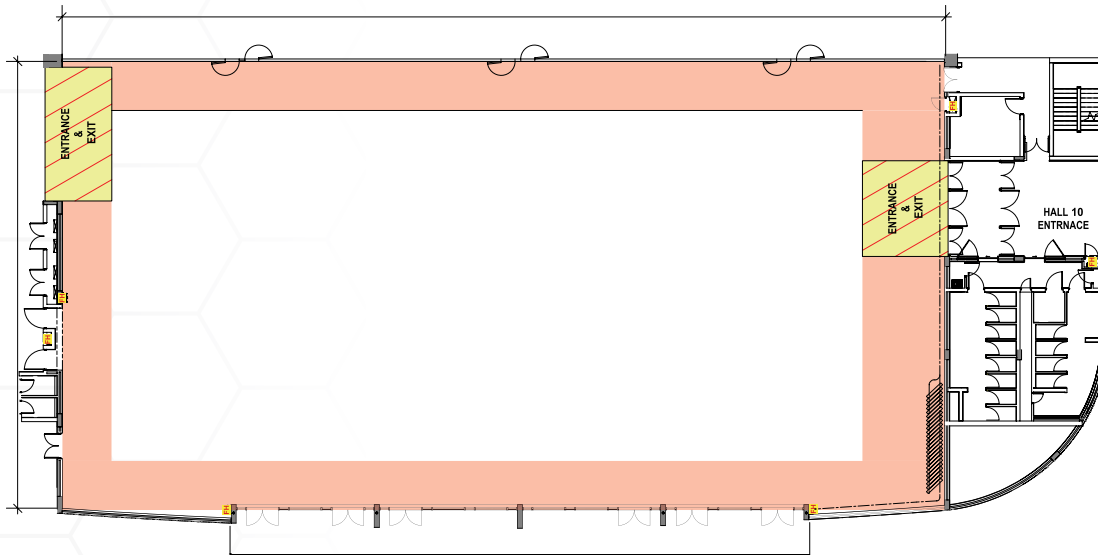
# CTICC 2 EXHIBITION HALL 9 | LEVEL 2



## CTICC 2 EXHIBITION HALL 9 | LEVEL 2

<b>Length</b>	53.52 m
<b>Width</b>	35.86 m
<b>Total area</b>	1 933 m <sup>2</sup>
<b>Height</b>	10 m to 12 m
<b>Subdivision:</b>	
<b>8.1</b>	313 m <sup>2</sup>
<b>8.2</b>	314 m <sup>2</sup>
<b>8.3</b>	352 m <sup>2</sup>
<b>Inside foyer</b>	489 m <sup>2</sup>
<b>Doors</b>	Front-of-house
<b>Service door</b>	D7C/050: 7.2 m (wide) x 5.3 m (high)
<b>Floor loading</b>	750k g/m <sup>2</sup> (0.75 kN/m <sup>2</sup> )
<b>Air-conditioning</b>	Automatic
<b>Light intensity</b>	0% or 100% (pre-sets)
<b>Light facilities</b>	0% or 100% dimmable LED lighting
<b>Access loading/unloading</b>	Marshalling Yard
<b>Facility trenches</b>	In the floor every 4.5 m
	Power points
	Available through the ICT Department
	Water/drainage available
<b>Outside broadcasting van connection</b>	Can be arranged
<b>Large power</b>	Bulk supply:
	400 A 3-phase
	125 A 3-phase
	63 A 3-phase
<b>Small power</b>	32 A 3-phase
<b>Audio-visual</b>	Available from CTICC's preferred service providers
<b>Theatre-style capacity</b>	1 890
<b>Classroom-style capacity</b>	1 248
<b>Banquet-style capacity</b>	960
<b>Cocktail-style capacity</b>	864
<b>Exhibition booth capacity</b>	103
<b>Carpets</b>	Hall is carpeted

# CTICC 2 EXHIBITION HALL 10 | LEVEL 2



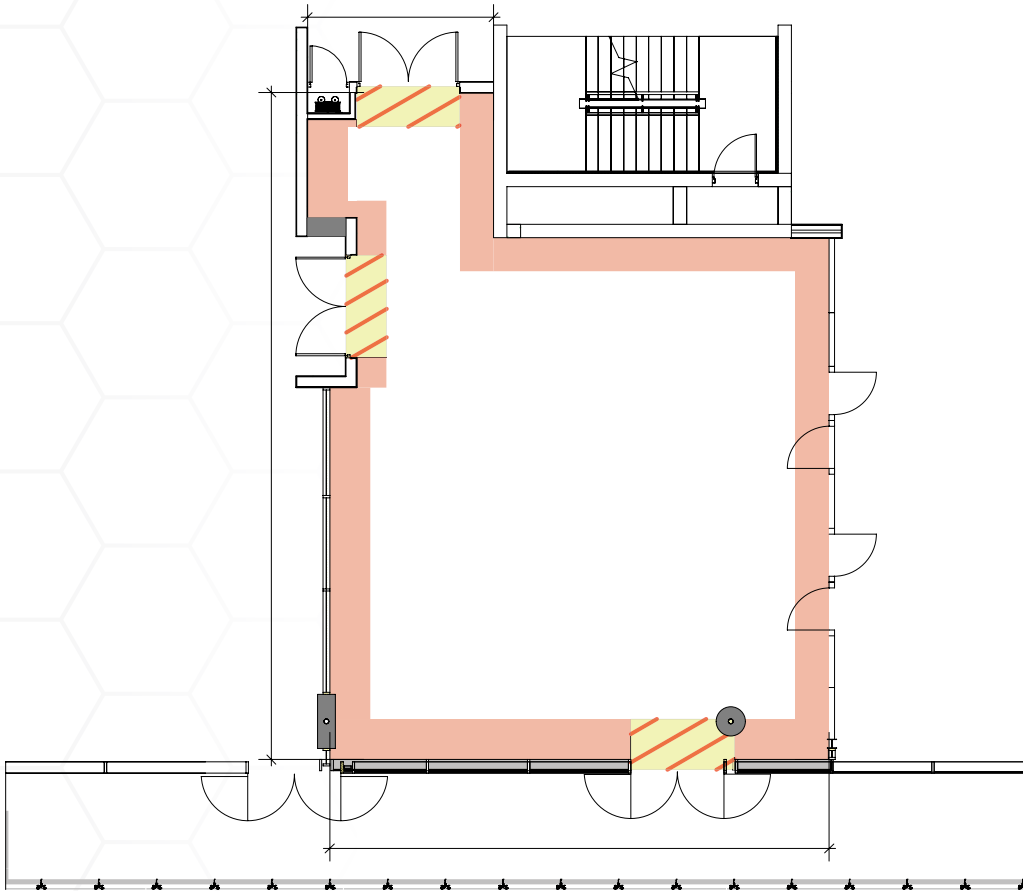
## CTICC 2 EXHIBITION HALL 10 | LEVEL 2

<b>Length</b>	53.92 m
<b>Width</b>	27.07 m
<b>Total area</b>	1 459 m <sup>2</sup>
<b>Height</b>	10 m to 12 m
<b>Doors</b>	Front-of-house
<b>Service door</b>	D7C/050: 7.2 m (wide) x 5.3 m (high)
<b>Floor loading</b>	750 kg/m <sup>2</sup> (0.75 kN/m <sup>2</sup> )
<b>Air-conditioning</b>	Automatic
<b>Light intensity</b>	0% or 100% (pre-sets)
<b>Light facilities</b>	0% or 100% dimmable LED lighting
<b>Access loading/unloading</b>	Marshalling Yard
<b>Facility trenches</b>	In the floor every 4.5 m
<b>Facility trench content</b>	Power points
<b>Telephone/data points</b>	Available through the ICT Department
<b>Water/drainage/compressed airline</b>	Water/drainage available
<b>Outside broadcasting van connection</b>	Can be made available by prior arrangement
<b>Large power</b>	Bulk supply: 400 A 3-phase 125 A 3-phase 63 A 3-phase
<b>Small power</b>	32 A 3-phase
<b>Audio-visual</b>	Available from CTICC's preferred service providers
<b>Theatre-style capacity</b>	1 386 960 720
<b>Cocktail-style capacity</b>	648
<b>Exhibition booth capacity</b>	70
<b>Carpets</b>	Hall is carpeted

# CTICC 2 MEETING PODS



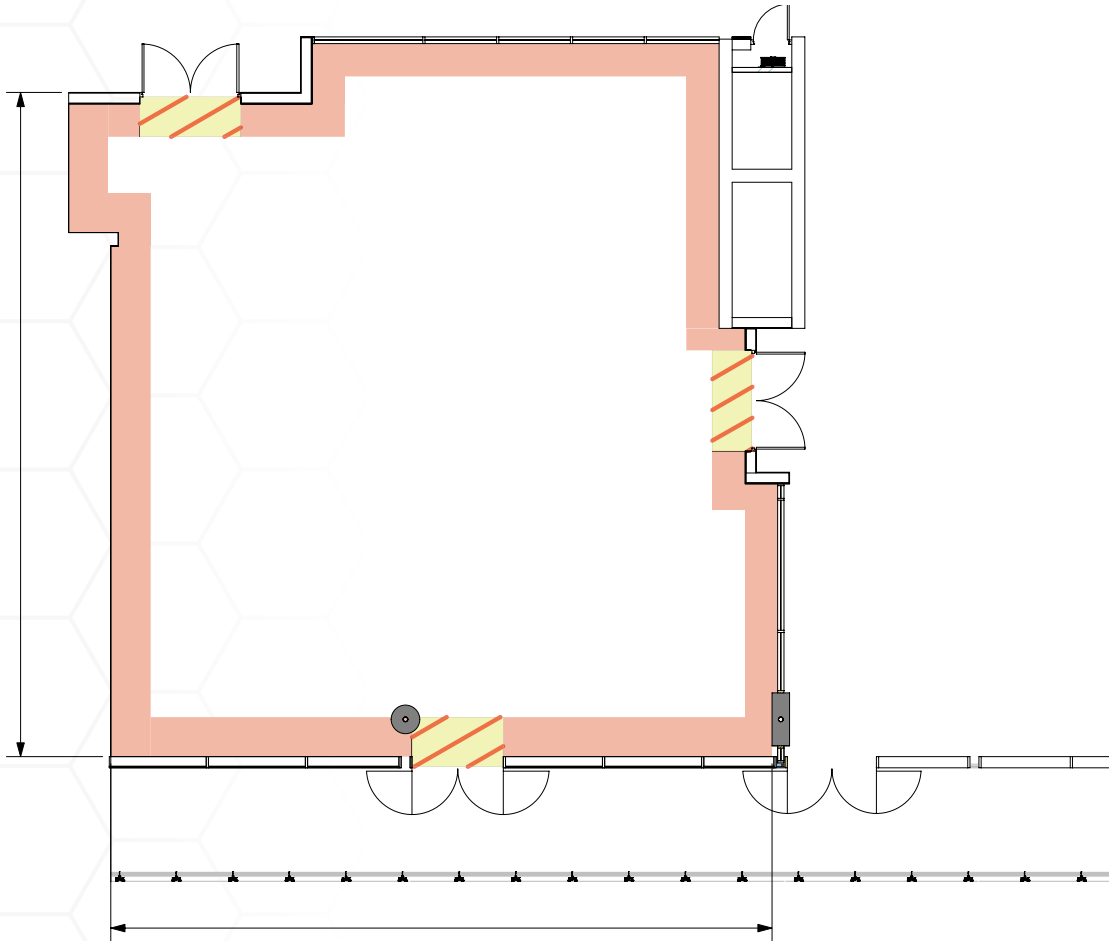
# NERINA



## NERINA

<b>Length</b>	14.88 m
<b>Width</b>	11.08 m
<b>Total area</b>	164 m <sup>2</sup>
<b>Height</b>	4.9 m
<b>Doors</b>	Front-of-house
<b>Air-conditioning</b>	Automatic
<b>Light intensity</b>	0% to 100% (pre-sets)
<b>Light facilities</b>	0% to 100% dimmable LED lighting
<b>Theatre-style capacity</b>	124
<b>Classroom-style capacity</b>	96
<b>Banquet-style capacity</b>	50
<b>Cocktail-style capacity</b>	60
<b>Carpets</b>	Standard

# PROTEA

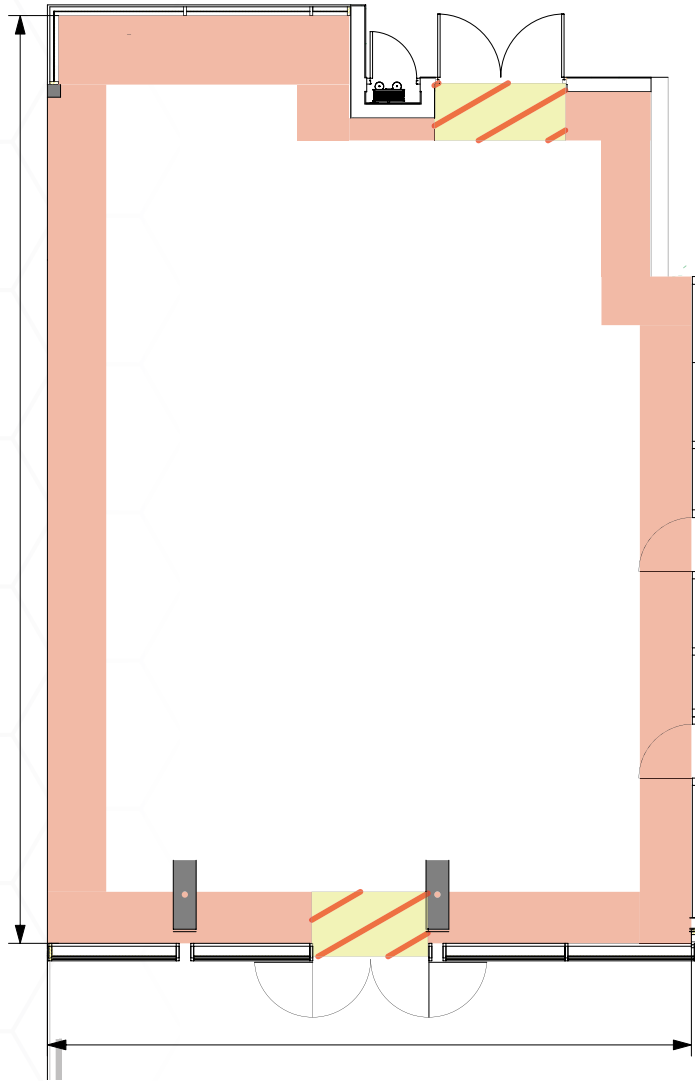


## PROTEA

<b>Length</b>	16.05 m
<b>Width</b>	15.03 m
<b>Total area</b>	226 m <sup>2</sup>
<b>Height</b>	4.9 m
<b>Doors</b>	Front-of-house
<b>Air-conditioning</b>	Automatic
<b>Light intensity</b>	0% to 100% (pre-sets)
<b>Light facilities</b>	0% to 100% dimmable LED lighting
<b>Theatre-style capacity</b>	204
<b>Classroom-style capacity</b>	189
<b>Banquet-style capacity</b>	110
<b>Cocktail-style capacity</b>	108
<b>Carpets</b>	Standard

*\*Nerina and Protea can be used as a combined venue. Please see the capacity chart for dimensions.*

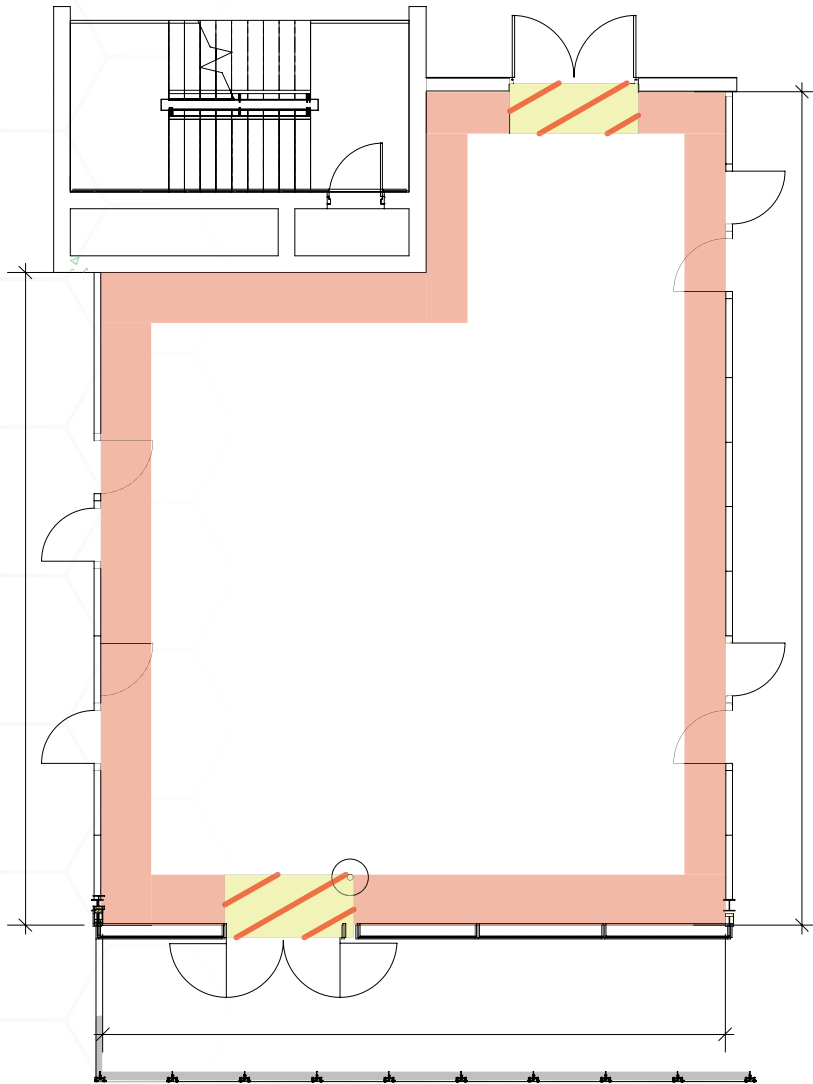
# DAISY



## DAISY

<b>Length</b>	16.19 m
<b>Width</b>	11.80 m
<b>Total area</b>	191 m <sup>2</sup>
<b>Height</b>	3.15 m
<b>Doors</b>	Front-of-house
<b>Air-conditioning</b>	Automatic
<b>Light intensity</b>	0% to 100% (pre-sets)
<b>Light facilities</b>	0% to 100% dimmable LED lighting
<b>Theatre-style capacity</b>	146
<b>Classroom-style capacity</b>	126
<b>Banquet-style capacity</b>	60
<b>Cocktail-style capacity</b>	76
<b>Carpets</b>	Standard

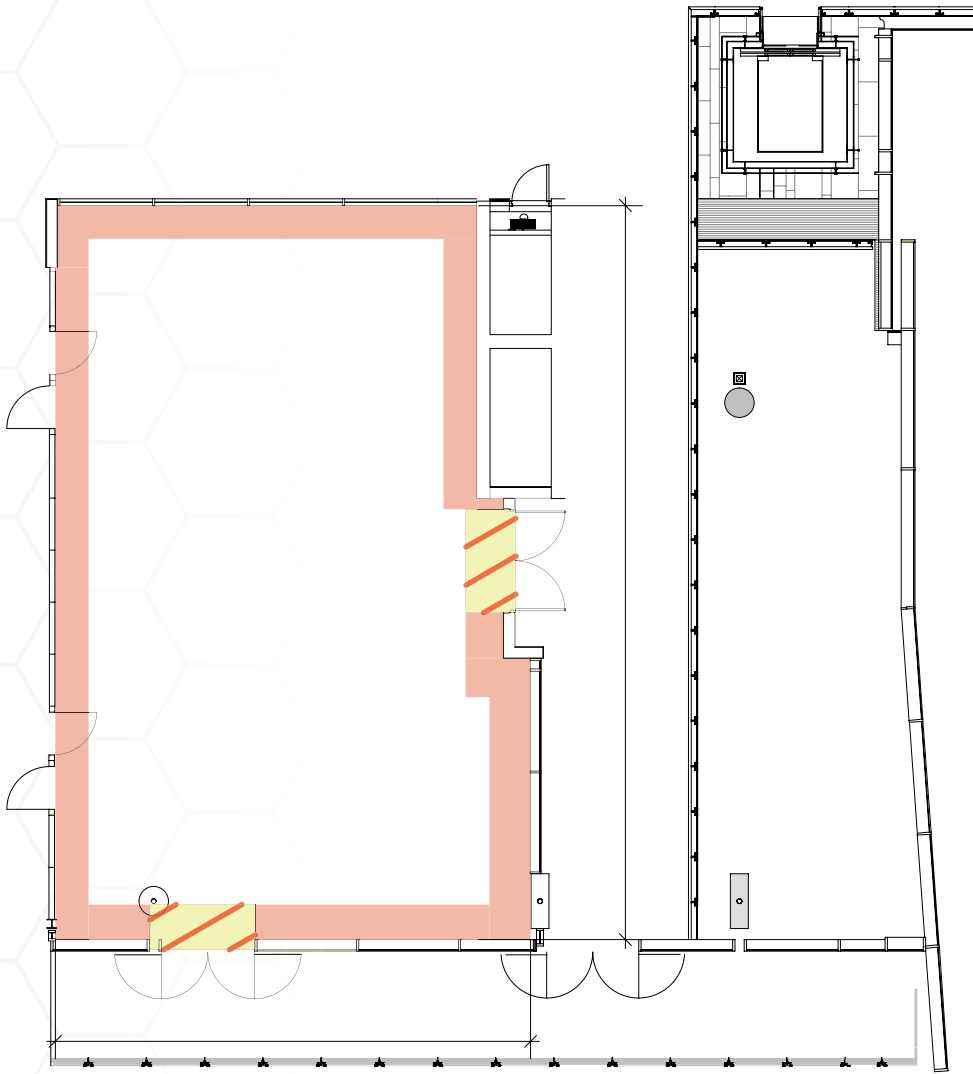
# FREESIA



## FREESIA

<b>Length</b>	14.88 m
<b>Width</b>	10.99 m
<b>Total area</b>	163 m <sup>2</sup>
<b>Height</b>	3.15 m
<b>Doors</b>	Front-of-house
<b>Air-conditioning</b>	Automatic
<b>Light intensity</b>	0% to 100% (pre-sets)
<b>Light facilities</b>	0% to 100% dimmable LED lighting
<b>Theatre-style capacity</b>	136
<b>Classroom-style capacity</b>	111
<b>Banquet-style capacity</b>	60
<b>Cocktail-style capacity</b>	68
<b>Carpets</b>	Standard

# ORCHID



## ORCHID

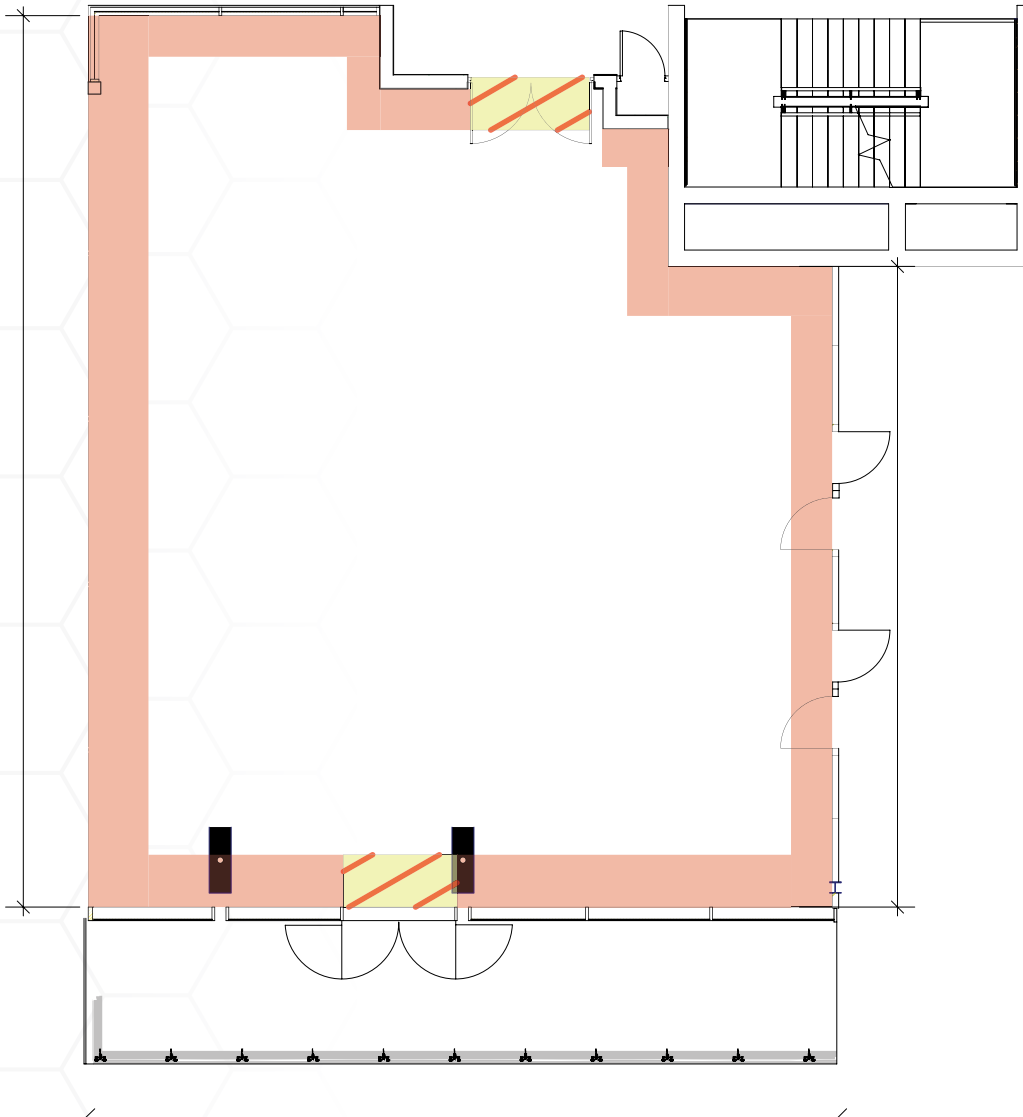
<b>Length</b>	16.14 m
<b>Width</b>	10.77 m
<b>Total area</b>	173 m <sup>2</sup>
<b>Height</b>	3.15 m
<b>Doors</b>	Front-of-house
<b>Air-conditioning</b>	Automatic
<b>Light intensity</b>	0% to 100% (pre-sets)
<b>Light facilities</b>	0% to 100% dimmable LED lighting
<b>Theatre-style capacity</b>	156
<b>Classroom-style capacity</b>	129
<b>Banquet-style capacity</b>	80
<b>Cocktail-style capacity</b>	84
<b>Carpets</b>	Standard

*\*Daisy, Freesia and Orchid can be used as a combined venue. Please see the capacity chart for dimensions.*



# CTICC 2 TERRACES AND OUTDOOR VENUE

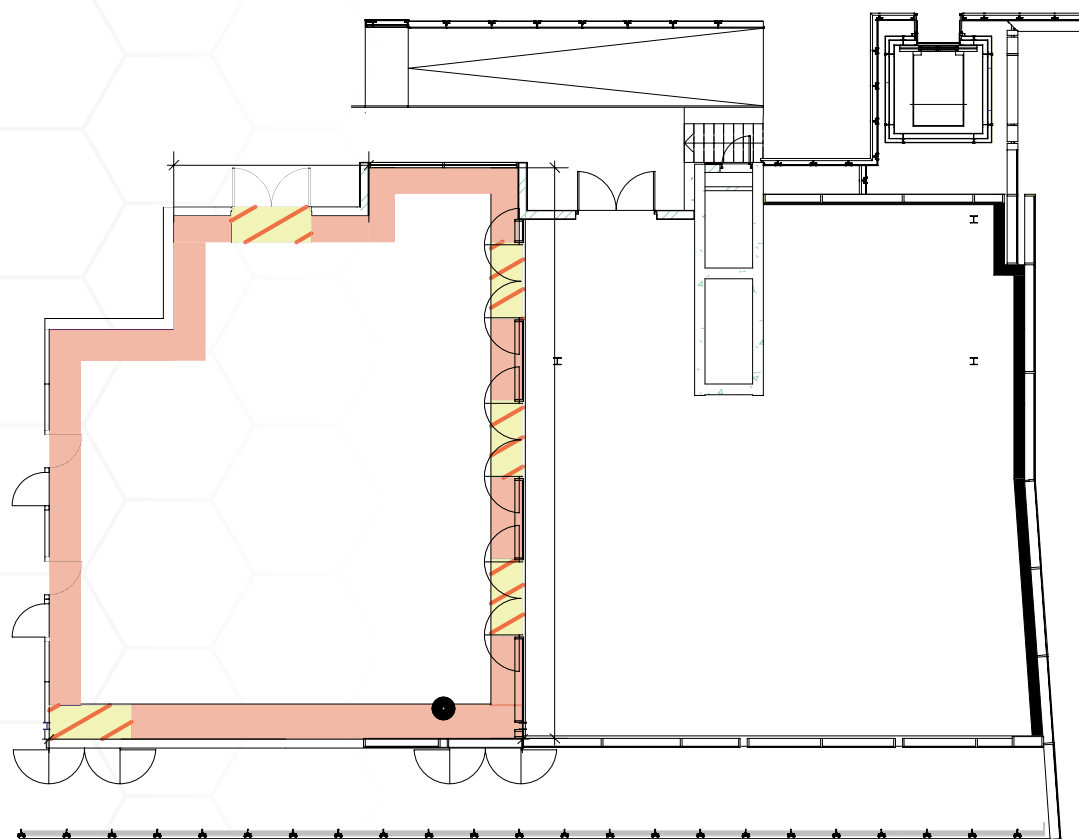
# WATSONIA



## WATSONIA

Length	16.33 m
Width	13.41 m
Total area	206 m <sup>2</sup>
Height	3.13 m
Doors	Front-of-house
Air-conditioning	Automatic
Light intensity	0% to 100% (pre-sets)
Light facilities	0% to 100% dimmable LED lighting
Theatre-style capacity	196
Classroom-style capacity	168
Banquet-style capacity	110
Cocktail-style capacity	104
Carpets	Standard

# BLUEBELL

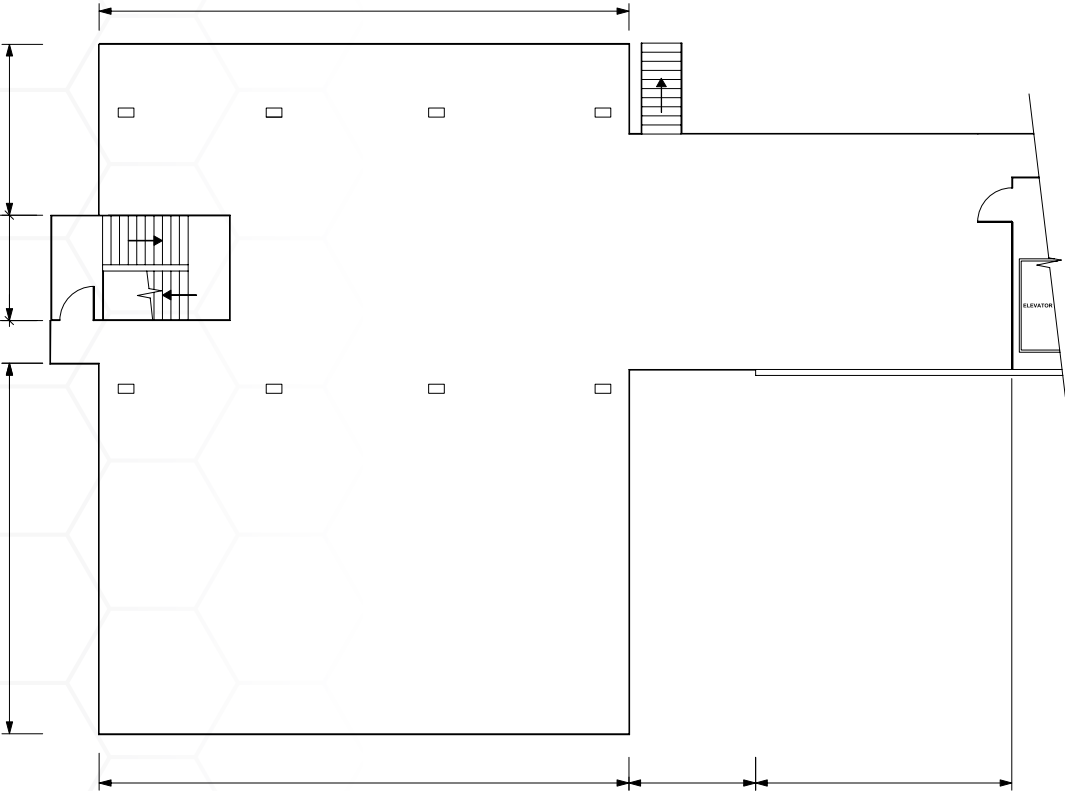


## BLUEBELL

Length	16.30 m
Width	13.29 m
Total area	196 m <sup>2</sup>
Height	3.13 m
Doors	Front-of-house
Air-conditioning	Automatic
Light intensity	0% to 100% (pre-sets)
Light facilities	0% to 100% dimmable LED lighting
Theatre-style capacity	183
Classroom-style capacity	156
Banquet-style capacity	110
Cocktail-style capacity	96
Carpets	Standard

*\*Watsonia and Bluebell can be used as a combined venue. Please see the capacity chart for dimensions.*

# MOUNTAIN VIEW

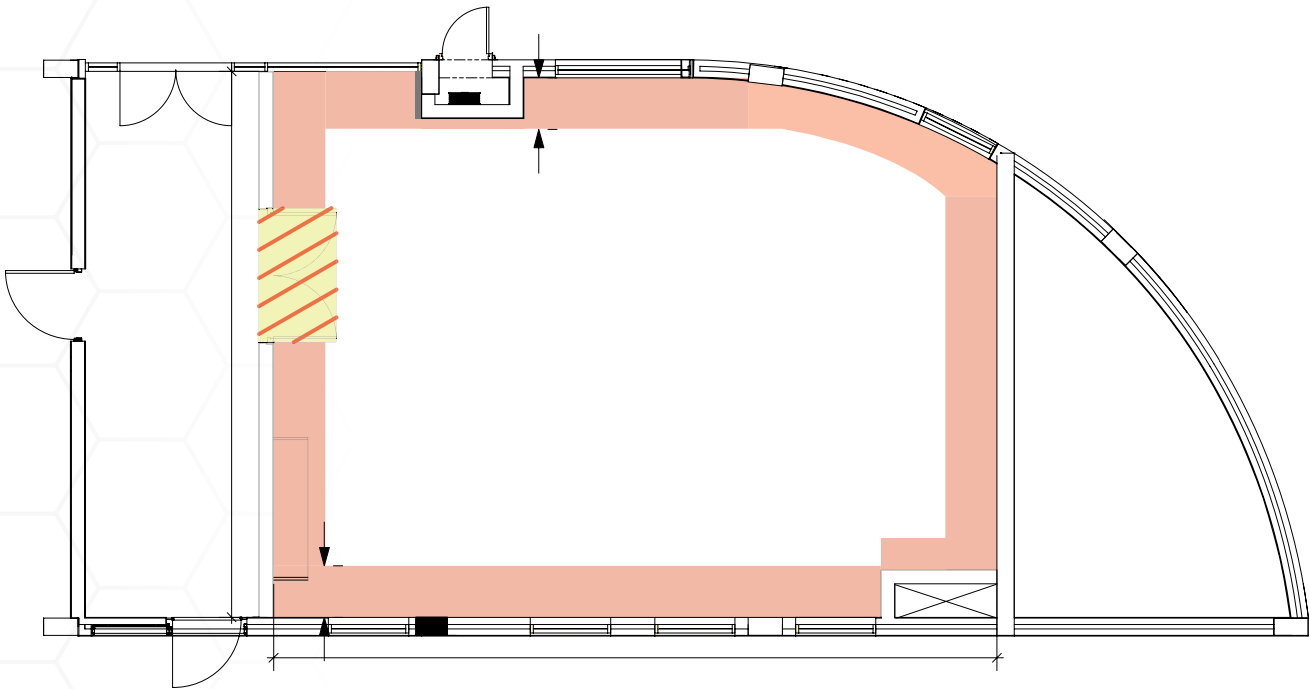


MOUNTAIN VIEW	
Length	18.55 m
Width	24.12 m
Total area	561 m <sup>2</sup>
Height	Outdoor venue
Cocktail-style capacity	216

# CTICC 2 MEETING ROOMS



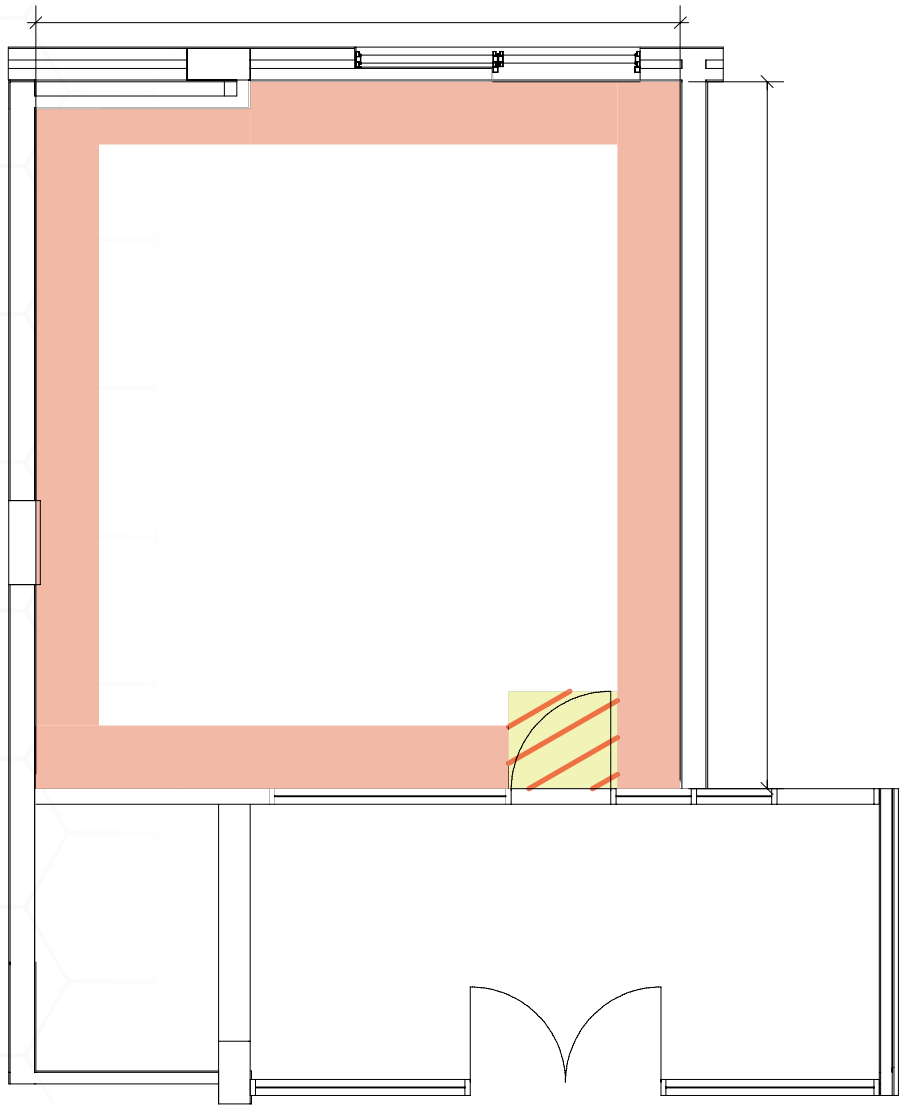
# PINCUSHION



## PINCUSHION

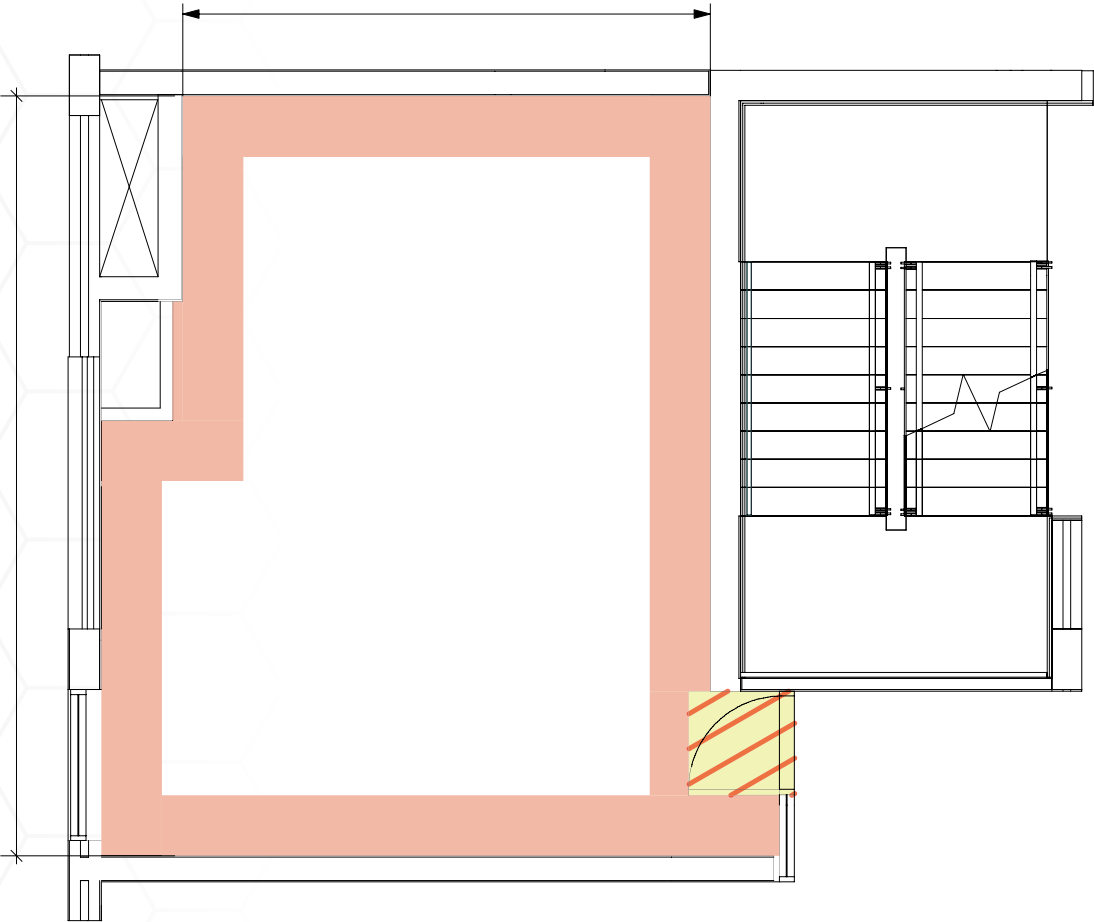
Length	12.60 m
Width	8.60 m
Total area	147 m <sup>2</sup>
Height	2.8 m
Doors	Front-of-house
Air-conditioning	Automatic
Light intensity	0% to 100% (pre-sets)
Light facilities	0% to 100% dimmable LED lighting
Boardroom capacity	24
Carpets	Standard

# ARUM



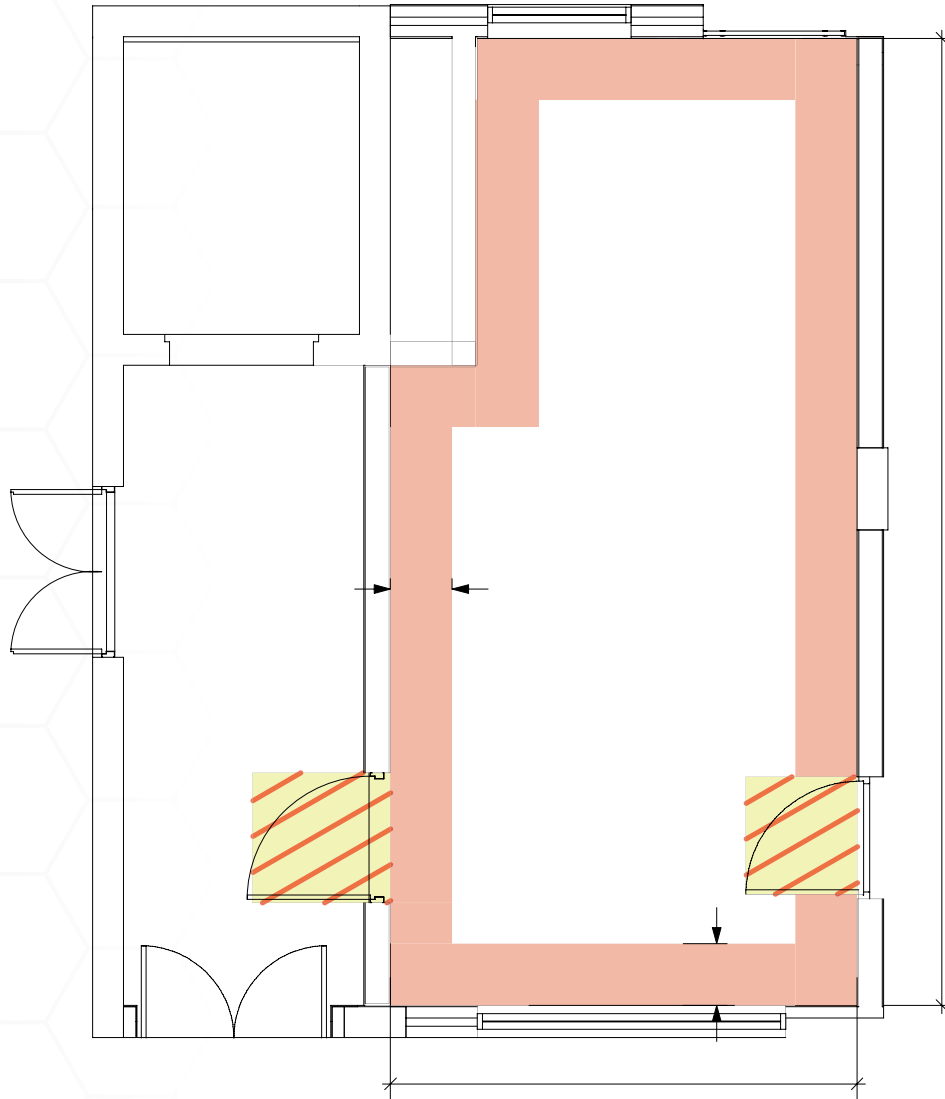
ARUM	
Length	6.73 m
Width	6.12 m
Total area	41 m <sup>2</sup>
Height	2.7 m
Doors	Front-of-house
Air-conditioning	Automatic
Light intensity	0% to 100% (pre-sets)
Light facilities	0% to 100% dimmable LED lighting
Theatre-style capacity	40
Classroom-style capacity	18
Boardroom capacity	10
Carpets	Standard

DISA



DISA	
Length	6.04 m
Width	7.54 m
Total area	41 m²
Height	2.7 m
Doors	Front-of-house
Air-conditioning	Automatic
Light intensity	0% to 100% (pre-sets)
Light facilities	0% to 100% dimmable LED lighting
Theatre-style capacity	37
Classroom-style capacity	24
Boardroom capacity	10
Carpets	Standard

# ALOE



## ALOE

<b>Length</b>	9.44 m
<b>Width</b>	4.54 m
<b>Total area</b>	40 m <sup>2</sup>
<b>Height</b>	2.8 m
<b>Doors</b>	Front-of-house
<b>Air-conditioning</b>	Automatic
<b>Light intensity</b>	0% to 100% (pre-sets)
<b>Light facilities</b>	0% to 100% dimmable LED lighting
<b>Theatre-style capacity</b>	32
<b>Classroom-style capacity</b>	15
<b>Boardroom capacity</b>	10
<b>Carpets</b>	Standard

# CONTACT



## CTICC 1:

Convention Square, 1 Lower Long Street, Cape Town, 8001, South Africa  
GPS co-ordinates: -33.915141°, 18.425657°

## CTICC 2:

Corner of Heerengracht & Rua Bartholomeu Dias, Foreshore, Cape Town, 8001, South Africa  
GPS co-ordinates: -33.91747°, 18.42908°



+27 21 410 5000



info@cticc.co.za



Website: cticc.co.za



@CTICC



@CTICC\_Official



@official\_cticc



Cape Town International Convention Centre



NURTURE  
OUR  
WORLD

we are a green conscious convention centre

