



**FIRE SAFETY**  
**SPECIFICATIONS FOR THE**  
**GRIMALDI FORUM BUILDING**

BP 2000 – 10, Avenue Princesse Grace – MC 98001 Monaco cedex Tél. +377 99 99 2000 – Fax +377 99 99 2001

[www.grimaldiformum.com](http://www.grimaldiformum.com) – e-mail : [gf@grimaldiformum.com](mailto:gf@grimaldiformum.com)

S.A.M. d'exploitation du Grimaldi Forum au capital de 150.000 Euros – RCI 99 S 03583

S.S.E.E. 923 B 08665 – T.V.A. INTRACOMMUNAUTAIRE : FR 00 00509 21

<b>Introduction</b>	3
<b>1 - The building</b>	4
<b>2 - The principal safety measures</b>	4
2.1 - Reference texts	4
2.2 - Principal safety arrangements	5
<b>3 - Safety equipment in each area</b>	7
<b>4 - Complementary information, bans and restrictions</b>	17
4.1 - Gas	17
4.2 - Heat engine	17
4.3 - No smoking	17
4.4 - Fireworks and bare flames	17
4.5 - Inflammable liquids	18
4.6 - Smoke generators	18
4.7 - Mobile projection and sound equipment	18
4.8 - Reduction in the number of available exits	18
4.9 - Emergency exits	18
4.10 - Standpipe hoses	18
4.11 - Allowing safety equipment to function correctly	19
4.12 - Reaction to fire	19
4.13 - Velum	20
4.14 - Occupying the atrium	20
4.15 - Attractions likely to be a cause of danger to the public	20
<b>5 - The Grimaldi Forum's and the organiser's respective obligations</b>	21
5.1 - The Grimaldi Forum's obligations	21
5.2 - The organiser's obligations	21
5.3 - Joint obligations	24
Appendix 1	25
Appendix 2	37

**In an emergency contact the Central Security Office :  
dial 2424 on any of the building's telephones  
or dial 99 99 2424 from any other telephone  
or use the security intercoms**

# INTRODUCTION

The Grimaldi Forum building located at 10, avenue Princesse Grace, Monaco, is managed by S.A.M. Grimaldi Forum.

The present document constitutes the specifications mentioned in article 6 of Monegasque ministerial decree N°92-503; it lays down safety measures concerning premises or hired venues and stipulates the respective obligations of the Grimaldi Forum and the show or event organiser in relation to the application of instructions inherent in currently applicable regulations and imposed by the administrative authority.

A copy of this document can be obtained by show or event organisers from the project manager appointed by the Events Department.

A copy of this document is adjoined to the Grimaldi Forum building safety register.

# FIRE SAFETY

## SPECIFICATIONS FOR THE GRIMALDI FORUM BUILDING

### 1. The building

The Grimaldi Forum comprises several areas within one and the same establishment on approximately 35,000 m<sup>2</sup> of floor area open to the public. These areas include:

- the Salle des Princes, an auditorium with 1900 seats;
- the Salle Prince Pierre, an auditorium with 800 seats;
- the Salle Camille Blanc, an auditorium with 400 seats;
- a series of committee rooms providing 1200 seats for congress delegates;
- the Salle Nijinsky, a 300-m<sup>2</sup> exhibition hall that can be converted into a committee room with 400 seats;
- Diaghilev, a 3800-m<sup>2</sup> exhibition hall;
- Ravel, a 4200-m<sup>2</sup> exhibition hall.
- 

These premises range between -12.30 metres at the lowest point of the stalls in the Salle des Princes (level -5) and +9.50 metres (level +1) in relation to sea-level. Access routes for rescue equipment range between +6.00 metres and +7.50 metres in relation to sea-level. An atrium equipped with suitable fire extinguishing devices at glass roof level, extends from level -2 to level +2. An atrium "with reduced thermal potential" reaches from level -2 to level +2.

Heavy goods vehicles have direct access to the heart of the building at -8.00 metres in relation to sea-level.

### 2. The principal safety measures

#### 2.1. Reference texts

The building is open to the public and is therefore subject to Monegasque ministerial decree N°67-264 dated 17 October 1967, completed by the French "regulation dated 25 June 1980". The organisation of events is governed by Monegasque ministerial decree N° 92-503 dated 4 September 1992.



## **2.2. Principal safety arrangements**

### **2.2.1. Classification of the building**

The building is classed as: a Category One public venue hosting the following activities: SP(shows), T (exhibitions), N (restaurants), Q (conferences), M (shops) and P (dance studios). It is governed by Monegasque ministerial decree No. 67-264 of 17 October 1967, completed by the French regulation of 25 June 1980 (measures that were confirmed when the building permit was under study).

### **2.2.2. Access to the building**

The building can be accessed from Avenue Princesse Grace along its west façade and via an access for emergency vehicles that runs the length of the east façade.

The access for emergency vehicles leads onto the esplanade which vehicles use to turn round.

### **2.2.3. Compartmentalisation**

The building is divided into fourteen compartments. Partitions are fire-resistant for two hours. When a fire is detected, the compartment in question is automatically isolated from neighbouring compartments.

### **2.2.4. Exit aisles**

Protected exit aisles are used to evacuate occupants. These exit aisles take into consideration the extent to which the building is underground.

Emergency exits that open onto the outside are locked electrically under electronic control and anti-burglary surveillance; they open automatically in case of fire broadcasting the evacuation message in the affected compartment(s).

### **2.2.5. Electricity**

Safety facilities are supported by two otherwise redundant power generators.

### **2.2.6. Smoke control**

All premises mentioned in paragraph 1 are smoke controlled.

### **2.2.7. Fire safety Department**

A fire safety department, in direct liaison with Monaco's fire brigade, keeps the establishment under permanent surveillance.

When the public is on the premises, a minimum of two fire safety agents, including a team leader, is present on the site.

These resources are reinforced in the event of Safety Department intervention to comprise a safety supervisor (SSIAP2) and a patrol man (SSIAP1) (see procedure 24-10-016 version C Fire Safety / Safety Department Organisation).

### **2.2.8. Rescue measures**

- Category A fire safety system with automatic fire detection covering the complete site.
- Automatic extinction by water, covering the exhibition areas in particular.
- Dry risers.
- Network of standpipe hoses. DN 25 mm and DN 40 mm.
- Large-scale device of the "deluge" type on the stage of the Salle des Princes.
- Extinguishers to match risks.

### **2.2.9. Complementary means linked to an event**

Above and beyond permanent measures, extra human and material resources deployed for an event are placed under the authority of the Grimaldi Forum Fire Safety Department.

The costs incurred by these complementary measures are charged to the organiser.

### 3. Safety equipment in each area

The enclosed plans indicate the location of exit aisles, standpipe hoses, confinement screens, etc, for each of the areas listed above.

The following tables complete the abovementioned plans and list the safety measures in each area.

#### ESPACE DIAGHILEV ET SALLE NIJINSKI

<b>Area</b>	<b>Espace Diaghilev Salle Nijinski</b>	<b>Floor area</b>	3561 m <sup>2</sup> 300 m <sup>2</sup>
<b>Level</b>	Niveau -1	<b>Relation to sea-level</b>	+1.25 m and +2.50 m
<b>Maximum number of exit aisles</b>	9	<b>Maximum number of exit units</b>	30
<b>Number of standpipe hoses</b>	7	<b>Number of extinguishers</b>	15
<b>Sprinkler</b>	Yes (preactuator)	<b>Smoke control</b>	Yes (mechanical)
<b>Automatic confinement screen</b>	Yes	<b>Service load</b>	- Area : 500 daN/m <sup>2</sup> - Footbridge : 500 daN/m <sup>2</sup>
<b>Reaction to fire (materials)</b>	- Stands (partitions and framework) : M3 or D-s3, d0 - Coverings on floors, podiums, platforms etc. : M3 or D-s3, d0 - Velum : M1 or B-s2, d0		
<b>Divers</b>	<p>The use of velum is subject to special authorisation, on request, according to the conditions defined in paragraph 4.</p> <p>In the box-office area (level -1 and level 0), only materials in Classes M0 or A2-s1, d0 and M1 or B2, s2, d0</p> <p>Wall sprinklers have been installed around the outskirts of the atrium and under the control room in Diaghilev; they must never be obstructed.</p> <p>Authorisation must be obtained from the Grimaldi Forum 's safety officer before loads are wheeled across the footbridge.</p> <p>Diaghilev is equipped with "performance mode" detectors.</p>		

## ESPACE GRAND HALL

<b>Area</b>	<b>Grand Hall</b>	<b>Floor area</b>	1600 m <sup>2</sup>
<b>Level</b>	Niveau 0	<b>Relation to sea-level</b>	+7.50 m
<b>Maximum number of exit aisles</b>	3	<b>Maximum number of exit units</b>	16
<b>Number of standpipe hoses</b>	3	<b>Number of extinguishers</b>	5
<b>Sprinkler</b>	« Flood » system in area beneath glass roof	<b>Smoke control</b>	Yes (mechanical)
<b>Automatic confinement screen</b>	Yes	<b>Service load</b>	500 daN/m <sup>2</sup>
<b>Reaction to fire (materials)</b>	<ul style="list-style-type: none"> <li>- Stands (partitions and framework) : M3 or D-s3, d0</li> <li>- Coverings on floors, podiums, platforms etc. : M3 or D-s3, d0</li> <li>- Velum : M1 or B-s2, d0</li> </ul>		
<b>Divers</b>	<p>The use of velum is subject to special authorisation, on request, according to the conditions defined in paragraph 4.</p> <p>The taps controlling the extinguisher system that protects the area beneath the glass roof are constantly kept clear, perfectly accessible and visible at all times.</p> <p>During events, a fire safety officer, placed under the responsibility of the Grimaldi Forum's Fire Safety Department, will watch over the area beneath the glass roof.</p>		



## ESPACE RAVEL

<b>Area</b>	<b>Espace Ravel</b>	<b>Floor area</b>	4215 m <sup>2</sup>
<b>Level</b>	Niveau 1	<b>Relation to sea-level</b>	+9.50 m
<b>Maximum number of exit aisles</b>	9	<b>Maximum number of exit units</b>	45
<b>Number of standpipe hoses</b>	9	<b>Number of extinguishers</b>	12
<b>Sprinkler</b>	Yes (preactuator)	<b>Smoke control</b>	Yes (natural)
<b>Automatic confinement screen</b>	Yes	<b>Service load</b>	- Area : 1000 daN/m <sup>2</sup> - Access ramp: 400 daN/m <sup>2</sup>
<b>Reaction to fire (materials)</b>	- Stands (partitions and framework) : M3 or D-s3, d0 - Coverings on floors, podiums, platforms etc. : M3 or D-s3, d0 - Velum : M1 or B-s2, d0		
<b>Divers</b>	The use of velum is subject to special authorisation, on request, according to the conditions defined in paragraph 4. Sliding doors that give onto the outside are used to introduce new air for smoke control.		

## AUDITORIUM SALLE DES PRINCES

<b>Area</b>	<b>Salle des Princes</b>	<b>Capacity</b>	1864 seats and 10 seats PMR
<b>Level</b> - Stalls - Balcony - Stage	Level -4 Level -1 Level -5	<b>Relation to sea-level</b> - Stalls - Balcony - Stage	-7.30 m to -12.30 m +2.90 m to -2.90 m -11.50 m
<b>Number of exit aisles</b> - Stalls - Balconies	10 3	<b>Number of exit units</b> - Stalls - Balcony	30 8
<b>Number of standpipe hoses on stage</b>	3	<b>Number of extinguishers</b> - Stalls - Stage - Balcony	10 4 4
<b>Sprinkler</b> - Auditorium - Stage	No « Deluge » system	<b>Smoke control</b> - Auditorium - Stage	Yes (mechanical) Oui (mechanical /natural)
<b>Can stage area be isolated from</b>	Yes	<b>Service load</b> - Stalls and balcony - Stage	400 daN/m <sup>2</sup> 750 daN/m <sup>2</sup>
<b>Stage décor's reaction to fire</b>	- M3 or D-s3, d0 decor - Accessories subject to no requirements - Any program involving the use of fireworks or flames must be examined by the Technical Commission for Health, Safety and Environmental Protection, which must be notified one month before the start of the event.		

## AUDITORIUM SALLE PRINCE PIERRE

<b>Local</b>	<b>Salle Prince Pierre</b>	<b>Capacity</b>	800 seats and 4 seats PMR
<b>Level</b> - Auditorium - Stage	Level -2 Level -4	<b>Relation to sea-level</b> - Auditorium - Stage	-2.00 m to -8.30 m -7.70 m
<b>Number of exit aisles</b>	5	<b>Number of exit units</b>	15
<b>Number of standpipe hoses on stage</b>	2	<b>Number of extinguishers auditorium / stage</b>	4 / 4
<b>Sprinkler</b>	No	<b>Smoke control</b>	Yes (mechanical)
<b>Can stage area be isolated from auditorium?</b>	No	<b>Service load</b>	400 daN/m <sup>2</sup>
<b>Stage décor's reaction to fire</b>	Materials M1 or B-s2, d0. However M2 materials or C-s2, d0 or M3 wood or D-s3, d0 may be allowed if : <ul style="list-style-type: none"> <li>• the audience is kept more than 2 metres from the décor</li> <li>• No fireworks or flames are used.</li> </ul>		

## AUDITORIUM SALLE CAMILLE BLANC

<b>Area</b>	<b>Salle Camille Blanc</b>	<b>Capacity</b>	405 seats and 6 seats PMR
<b>Level</b> - Auditorium - Stage	Level -2 Level -2	<b>Relation to sea-level</b> - Auditorium - Stage	-1.00 m to -2.50 m -2.00 m
<b>Number of exit aisles</b>	4	<b>Number of exit units</b>	12
<b>Number of standpipe hoses on stage</b>	1	<b>Number of extinguishers auditorium / stage</b>	2 / 2
<b>Sprinkler</b>	No	<b>Smoke control</b>	Yes (mechanical)
<b>Can stage area be isolated from auditorium?</b>	No	<b>Service load</b>	400 daN/m <sup>2</sup>
<b>Stage décor's reaction to fire</b>	Materials M1 or B-s2, d0. However M2 materials or C-s2, d0 or M3 wood or D-s3, d0 may be allowed if : <ul style="list-style-type: none"> <li>• the audience is kept more than 2 metres from the décor</li> <li>• No fireworks or flames are used.</li> </ul>		

## FOYER AUDITORIUM

<b>Area</b>	<b>Foyer auditorium</b>	<b>Capacity</b>	Unspecific
<b>Level</b>	Level -2	<b>Relation to sea-level</b>	-2.00 m
<b>Maximum number of exist aisles</b>	4	<b>Maximum number of exit units</b>	18
<b>Sprinkler</b>	Yes	<b>Smoke control</b>	Yes (mechanical)
<b>Ecran cantonnement automatique</b>	Yes	<b>Service load</b>	500 daN/m <sup>2</sup>
<b>Reaction of temporary facilities to fire</b>	<ul style="list-style-type: none"> <li>- Stands (partitions and framework) : M3 or D-s3, d0</li> <li>- Coverings on floors, podiums, platforms etc. : M3 or D-s3, d0</li> <li>- Velum : M1 or B-s2, d0</li> </ul>		



## SALLES DE COMMISSION

<b>Area</b>	<b>All committee rooms</b>	<b>Capacity</b>	1325 seats
<b>Level</b>	Level -2	<b>Relation to sea-level</b>	-4.00 m and – 2.00 m
<b>Nombre de dégagements maxi</b>	8	<b>Nombre d'UP maxi</b>	23
<b>Nombre de RIA</b>	8	<b>Nombre d'extincteurs</b>	27
<b>Sprinkler</b>	Oui	<b>Désenfumage</b>	Oui (mécanique)
<b>Ecran cantonnement automatique</b>	Oui	<b>Charges d'exploitation</b>	500 daN/m <sup>2</sup>
<b>Réaction au feu des aménagements temporaires</b>	<p>- In the rooms : M1 or B-s2, d0, apart from specific elements to be submitted to the Grimaldi Forum's safety officer for approval.</p> <p>- Outside the rooms :</p> <ul style="list-style-type: none"> <li>• Stands (partition &amp; framework) : M3 or D-s3, d0</li> <li>• Coverings of floors, podiums, platforms, etc : M3 or D-s3, d0</li> <li>• Velum : M1 or B-s2, d0</li> </ul>		

## ESPLANADE

<b>Area</b>	<b>Esplanade</b>	<b>Surface area</b>	Approximately 1600 m <sup>2</sup>
<b>Level</b>	Level 0	<b>Relation to sea-level</b>	+7.50 m
		<b>Service load</b> - <b>Esplanade</b> - <b>Footbridge</b>	1000 daN/m <sup>2</sup> 16T
<b>Divers</b>	<ul style="list-style-type: none"> <li>- Maintain a fire-fighting turning area on the esplanade at all times; arrangements to be submitted to the Grimaldi Forum safety officer for approval.</li> <li>- The maximum load capacity on the pedestrian bridge is 16 tons.</li> </ul>		

## LOGES ET LOCAUX ANNEXES

<b>Area</b>	<b>All dressing rooms and other premises around the Salle des Princes</b>			<b>Capacity</b>	See specific conditions below		
<b>Level</b>	Level -7 to -1			<b>Relation to sea-level</b>	- 16,50 m to + 1,50 m		
<b>Number of exit aisles</b>	- 3 on levels -2/-3/-7 - 4 on other levels			<b>Number of exit units</b>	10 in optimum cases		
<b>Sprinkler</b>	No			<b>Smoke control</b>	Yes (mechanical)		
<b>Number of standpipe hoses</b>	- 4 on levels -1 to -4 - 5 on level -5 - 2 on level -7			<b>Service load</b>	<b>- Dressing rooms</b> 250 daN/m <sup>2</sup> <b>- Corridors</b> 400 daN/m <sup>2</sup>		
<b>Divers</b>	The safety officer must carry out a specific analysis in each of the following cases: <ul style="list-style-type: none"> <li>• The standard workforce on a level is exceeded</li> <li>• Level -7 is used and the total workforce exceeds 133 people</li> <li>• Level -7 is not used and the total workforce exceeds 350 people</li> </ul>						
<b>Level</b>	-7	-6	-5	-4	-3	-2	-1
<b>Standard workforce</b>	133	0	350	54	34	12	500

## **4. Complementary information, bans and restrictions**

Right from the design phase of the project, the organiser will take into account the elements on the following non-exhaustive list of complementary information, bans and restrictions :

### **4.1. Gas**

No type of gas-powered equipment is allowed in the building.

### **4.2. Heat engine**

Apart from the delivery bay on level -4 and access routes to this area, no vehicle with a running heat engine is allowed in the building.

### **4.3. No smoking**

“Under Law no1.346 of 9 May 2008 on smoking prevention and Ministerial decree no2008-295 of 16 June 2008 enforcing Law no1.346 of 9 May 2008 on smoking prevention.”

The no smoking rule must be scrupulously respected, including during the setting up and dismantling phases, smoking areas are identified outside the building.

### **4.4. Fireworks and bare flames**

“Under safety regulations article AT3 appended to Ministerial decree no67-264 of 17 October 1967 on protection against risks of fire and panic in establishments open to the public.”

The use of fireworks is subject to special examination by the Technical Committee and a trial run "in situ", in the presence of the committee members. Fireworks must not generate incandescent fall-out likely to spark off a fire, or smoke in any great quantity that could hamper

the automatic fire detection system. The use of bare flames is forbidden during shows.

#### **4.5. Inflammable liquids**

Inflammable liquids may not be brought onto the premises without the approval of the safety officer.

#### **4.6 Smoke generators**

The organiser must declare his intention to use of a smoke generator at the earliest possible occasion. The Grimaldi Forum's safety officer will examine the case and set the limits to be respected and the measures to be taken to ensure that automatic fire detectors are not set off.

A smoke generator may only be switched on after the chief of the Fire Rescue Department has given his formal approval.

#### **4.7. Mobile projection and sound equipment**

Mobile projection and sound equipment must be plugged into specific fire safety system slavesockets.

These sockets allow the programme underway to be interrupted in order to broadcast an evacuation message.

#### **4.8. Reduction in the number of available exits**

As some exit aisles are common to several auditoria and areas, the Grimaldi Forum may advise the organiser that a smaller number of exit aisles is available in function of the use being made of the rest of the building.

#### **4.9. Emergency exit**

Unless an explicit and justified request is made, all exits must remain clear.

#### **4.10. Standpipe hoses**

No equipment or set-up must prevent the standpipe hoses from reaching all points within the areas being used.



#### 4.11. Allowing safety equipment to function correctly

Elements introduced into the exhibition area or onto the stage must in no way hamper the following equipment from functioning correctly:

- automatic fire detection system;
- smoke control (the air inlets featured in the plans must remain clear in particular);
- automatic extinction system using water;
- movement of automatic confinement screens (no element must exceed the free height stipulated on the plans);
- the device that seals the stage opening in the Salle des Princes;
- fire doors whether or not wired in to the automatic fire detection system.

#### 4.12. Reaction to fire

M0, M1, M2, M3 and M4 class reactions to fire must be confirmed in a valid report written by a laboratory that is recognised in France, or bear the NF label (conform to French standards), or carry the EUROCLASS label of compliance to European standards.

The conditions of use stipulated in the report must obviously be respected. Furthermore, proof of a fireproofed textile's classification of reaction to fire must be fixed to the edge of the textile if the fireproofing treatment was carried out in the factory or workshop, or proof will take the form of a stamp or seal if the fireproofing treatment was carried out in situ. The organiser is responsible for providing official proof that reaction to fire as determined by a foreign laboratory corresponds to the required local standard.

#### **4.13. Velum**

The use of velum during an event will only be authorised after a specific request has been made.

Such a request :

- will confirm conformity with paragraph 4.11 above,
- will suggest a hanging system that will prevent them from possibly falling whilst the audience is being evacuated,
- will confirm M1 class reaction to fire (cf. paragraph 4.12).

Stands or areas with a ceiling, false ceiling or solid velum, or those comprising a raised area, or those that do not meet the conditions stipulated in article 4.11. points one, two and three, must fulfil all of the following conditions :

- have a surface area of less than 300m<sup>2</sup>,
- have 4 metres at least between them,
- have a total surface area of solid false ceilings and ceilings (including raised areas) at most equal to 10% of the surface area of the level in question.

Each stand or area can have only one raised level.

Each and every stand or area with a floor area greater than 50 square metres must possess adequate extinguishing facilities that are permanently.

#### **4.14. Occupying the atrium**

The installation of optic linear detectors on level -1, authorises the presence of furniture or materials possessing M3 reaction to fire on the atrium mezzanine (level -1) also in the atrium itself (level -2).

The presence of furniture or exhibitions in the main hall under the Verrière (level 0) and in the atrium (level -2) is subject to a decision by the Grimaldi Forum safety officer.

#### **4.15. Attractions likely to be a cause of danger to the public**

All attractions likely to be a cause of danger to the public must be submitted to the Technical Commission for Health, Safety and Environmental Protection for an opinion, in accordance with the provisions of Ministerial Decree no. 92-503 of September 4, 1992, laying down the conditions governing the organization of shows and other events in enclosed or open-air establishments open to the public.

## 5. Obligations respectives du Grimaldi Forum et de l'organisateur

### 5.1. The Grimaldi Forum's obligations

The Grimaldi Forum runs the building and makes facilities that respect the abovementioned reference texts available to organisers.

The Grimaldi Forum supplies the qualified fire safety agents required by the regulations.

### 5.2. The organiser's obligations

5.2.1. The organiser must secure the services of at least one safety officer.

The safety officer must hold one of the following:

- the diploma or the fire prevention course specified in articles 1 and 14 of the French decree dated 28 December 1983, modified in relation to the creation of a diploma for fire hazard and panic prevention;
- the test stipulated in article 3 of the French decree dated 7 November 1990 relating to the conditions of approval of regulatory verifications concerning establishments open to the public;
- any other diploma judged by the Health, Safety & Environmental Protection Technical Committee to be equivalent.
- 

The need to possess one of the above diplomas is waived for individuals who have occupied the post of safety officer in France for at least 5 years before 14 January 1986.

The mission of the safety officer, under the responsibility of the organiser, is :

- To study the overall layout of the event with the event organiser and to participate in compiling of the safety dossier. This dossier is to be extremely precise as far as the organisation and the setting up of the different sections is concerned, and is to be co-signed by the organiser and the safety officer,
- To ensure that the organiser implements the instructions formulated by the Health, Safety & Environmental Protection Technical Committee,
- To inform and advise exhibitors about the technical safety measures to be taken for their facilities,
- To examine working machine declarations and authorisation requests, and to keep a list of stands where these machines are to be found,
- To ensure that fire safety measures are applied from the moment the stands begin to be assembled until the event closes to the public,
- To ensure that any stands on more than one level have undergone a solidity test by an approved body or person,
- To ensure that someone is always present while the public is present at the site of the event,

- To inform the administration in good time of any difficulties encountered in applying the present rules and regulations,
- If necessary, to provide emergency services with information concerning the location of radio-active sources, machines and devices that are in operation, as well as cars, lasers and inflammable liquids,
- To advise the organiser and the owner of the premises of any fact or state caused by other permanent operators within the establishment (cafeteria, restaurant, canteen, etc) likely to affect the level of safety at the event underway,
- To ensure that the establishment's safety equipment is not neutralised by other éléments introduced for the event underway,
- To verify the presence and the qualifications of safety department personnel allocated to the event,
- To write a final report on the application of safety regulations and the instructions issued by the Health, Safety & Environmental Protection Technical Committee that authorised the event to be held. This report is passed on, before the event opens to the public, simultaneously to the event organiser and to the owner of the premises. The report suggests whether or not all or part of the event should be opened to the public. The organiser ensures that a copy of the report is available to the Technical Committee at all times,
- Where applicable, to oblige the organiser to add any complementary signposting rendered necessary by the nature of the displays.

The organiser can choose between two options :

**Option 1** : Commissioning the Grimaldi Forum to set up the exhibition

If the organiser chooses to commission the Grimaldi Forum to take care of its overall set up procedures, a safety officer will be made available to carry out the abovementioned functions at no cost.

This officer must have a mandate from the organiser. The latter will fill out and return the enclosed form (see appendix, option 1) to the Grimaldi Forum.

**Option 2** : Not commissioning the Grimaldi Forum to set up the exhibition

The organiser must return the appended form (option 2) to the Grimaldi Forum, specifying the name, qualifications and contact details of his/her own safety officer. This safety officer must work in close collaboration with the Grimaldi Forum Fire Rescue Department. The latter will ensure that the event fits in perfectly with the other activities taking place in the building during the same period.

If the organiser so wishes, the Grimaldi Forum can allocate a safety officer for a fee.

In this case, the organiser will include the duly completed form (option 1) with his/her acceptance of the Grimaldi Forum's estimate.

If several safety officers are on duty in the establishment simultaneously, the head of the Fire Rescue Department will coordinate them.

5.2.2. The organiser, assisted by his/her safety officer, must compile a safety dossier stating at least :

- the identity and qualifications of the safety officer(s);
- the nature of the event;
- the risks entailed;
- its duration;
- precisely where it is taking place;
- numbers of expected members of the public and personnel;
- materials used for interior facilities;
- areas and facilities that the public might visit;
- areas and facilities reserved for exhibitors;
- areas and facilities reserved for temporary kitchens or bars;
- exit aisles;
- complementary prevention and protection measures, if necessary.

Three copies of this dossier must be given to the Grimaldi Forum before the event is commercialised and at the latest two and a half months before the event commences.

The Grimaldi Forum's Fire Rescue Department will forward its comments to the organiser within two weeks of receiving the dossier. Where applicable, the organiser will return three copies of the corrected or completed dossier to the Grimaldi Forum at the latest one and a half months before the event commences.

The Grimaldi Forum takes responsibility for forwarding the dossier to the Health, Safety & Environmental Protection Technical Committee, so that the committee can make sure that safety measures are respected and can determine surveillance conditions.

5.2.3 The Grimaldi Forum reserves the right to request from the organiser, before the public is allowed in, a certificate of conformity for electrical elements on stands issued by an approved inspection body in the Principality. This body's fees are charged to the organiser.

5.2.4 The Grimaldi Forum reserves the right to request from the organiser, before the public is allowed in, a certificate of conformity for structures such as tribunes, podiums, marquees, tents, etc, issued by an approved inspection body in the Principality. This body's fees are charged to the organiser.

5.2.5 The organiser must make sure that safety rules are applied within all facilities involved in his/her event from the moment such areas are made available to him/her.



### 5.3. Joint obligations

#### 5.3.1. Grimaldi Forum inspection procedures

- The Grimaldi Forum reserves the right to have its own Fire Safety Department carry out inspections at any time.
- Facilities must be, and must remain throughout the whole of the event, in keeping with currently applicable regulations (Monegasque or French, failing specific regulations).
- Facilities that fail to meet standards may, at the organiser's expense, be brought up to standard by the Grimaldi Forum.
- In the case of a serious breach, the Grimaldi Forum reserves the right to evacuate substandard facilities from the exhibition areas or the building, and even to stop the event. The organiser will not be able to claim any compensation and he/she is not discharged from paying the rental fee.

#### 5.3.2. Inspection and visit by the Technical Committee of Health, Safety and Environmental Protection

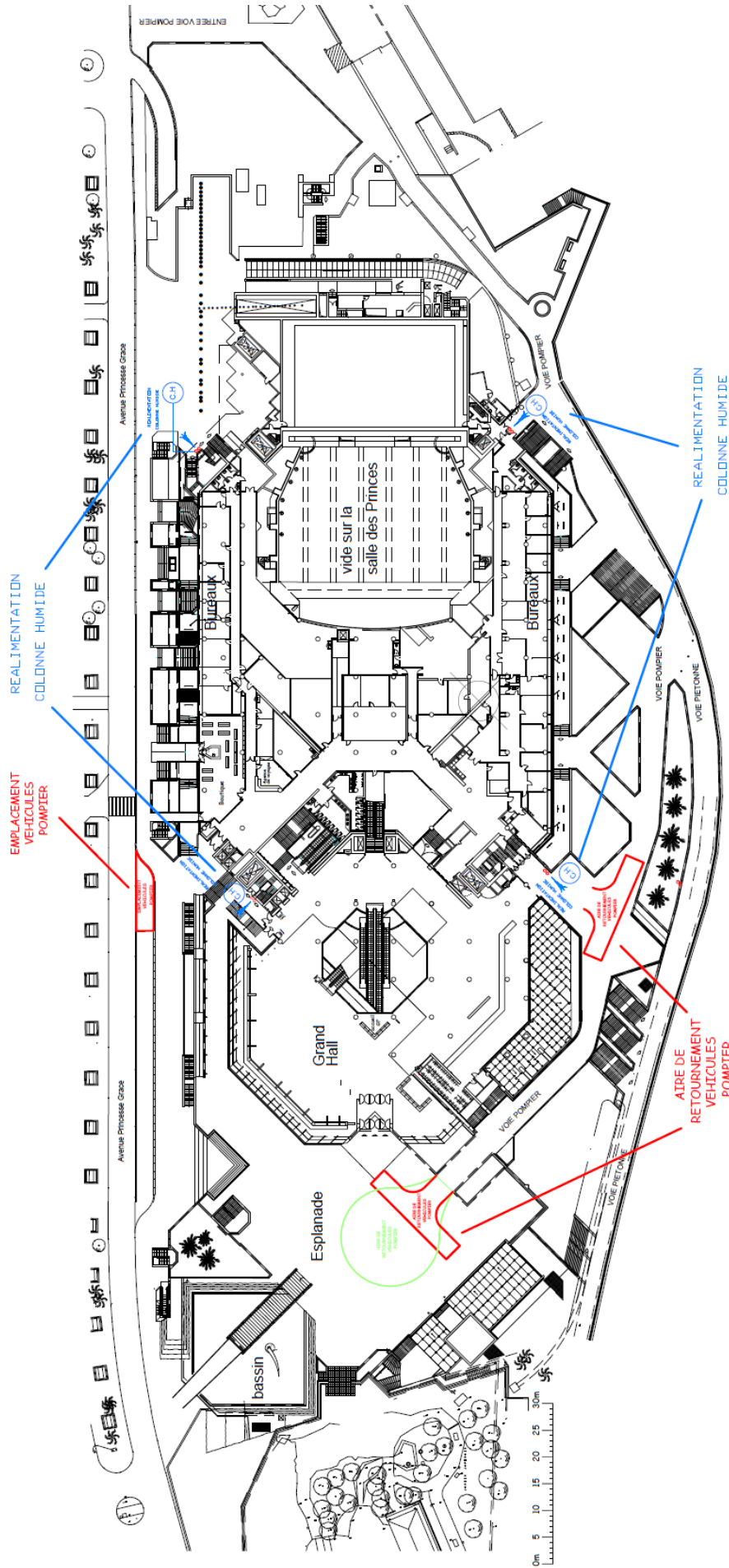
- Events of a commercial nature destined for exhibitions, trade exhibitions or trade fairs in which more than 1500 members of the public are present simultaneously must be examined by the Technical Committee.
- The dossier mentioned in paragraph 5.2.2 must reach the Technical Committee at the latest one month before the event is set up.
- Before the public is allowed in, the Technical Committee may proceed with a visit to inspect the facilities.
- The Grimaldi Forum and the organiser must attend the visit or be represented by a duly appointed representative.
- The organiser must implement the specific instructions formulated during this visit by the technical sub-committee.

## SAFETY PLANS

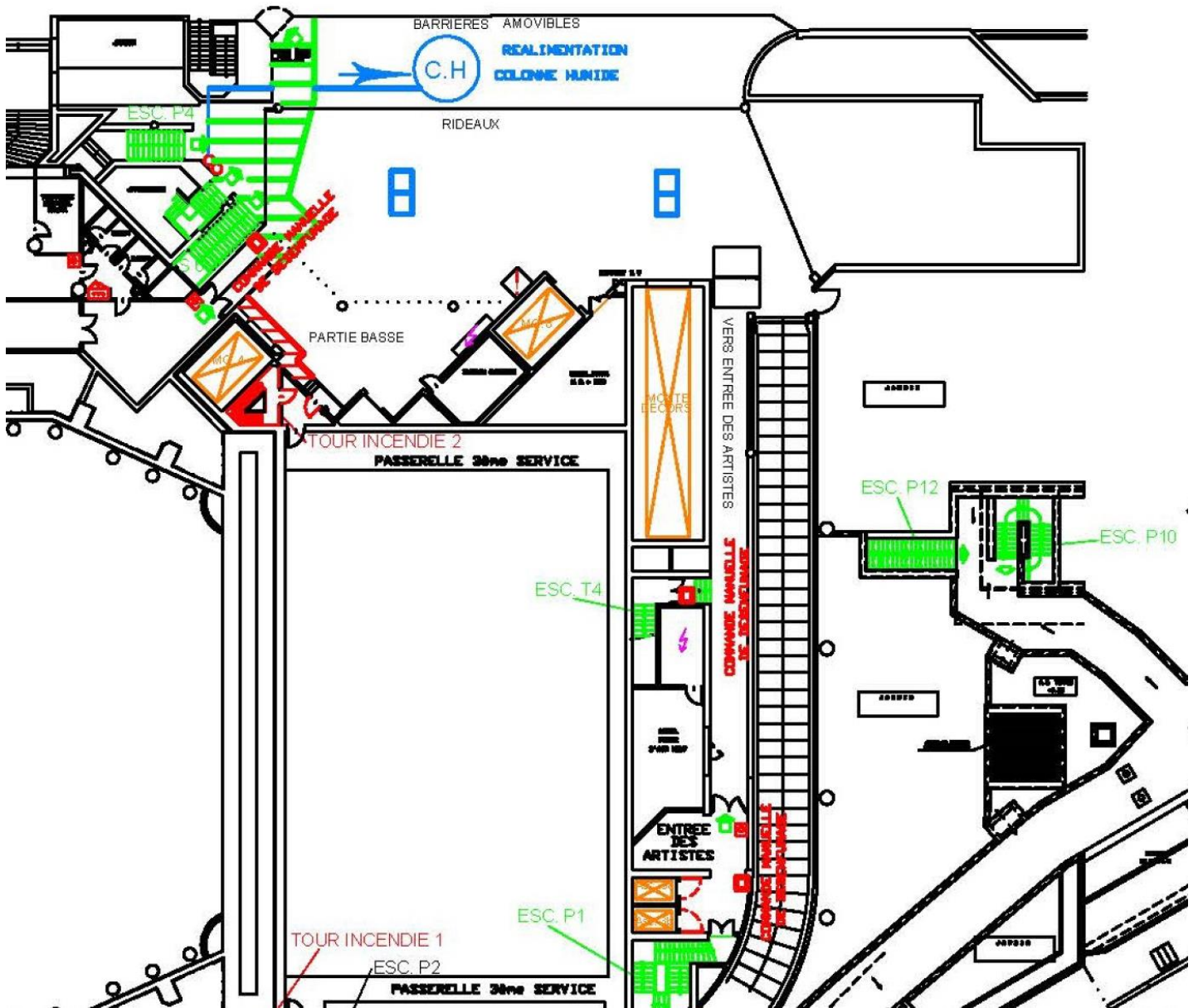
- Niveau -5 (S3) / Scène SALLE des PRINCES
- Niveau -2 (RI) Salles des Commissions / Foyer Salles commissions
- Niveau -2 (RI) Salles Prince PIERRE/Camille BLANC / Foyer RI Auditorium
- Niveau -1 / Mezzanine DIAGHILEV SUD
- Niveau -1 / Mezzanine DIAGHILEV EST/NORD
- Niveau 0 (Rdc) Grand Hall
- Niveau 0 (RdC) Aire de déchargement (G1)
- Niveau +1 (N1) / Ravel / Espace INDIGO
- Niveau +2 (N2) GUELFE /GENOIS
- Emplacements réservés aux sapeurs pompiers

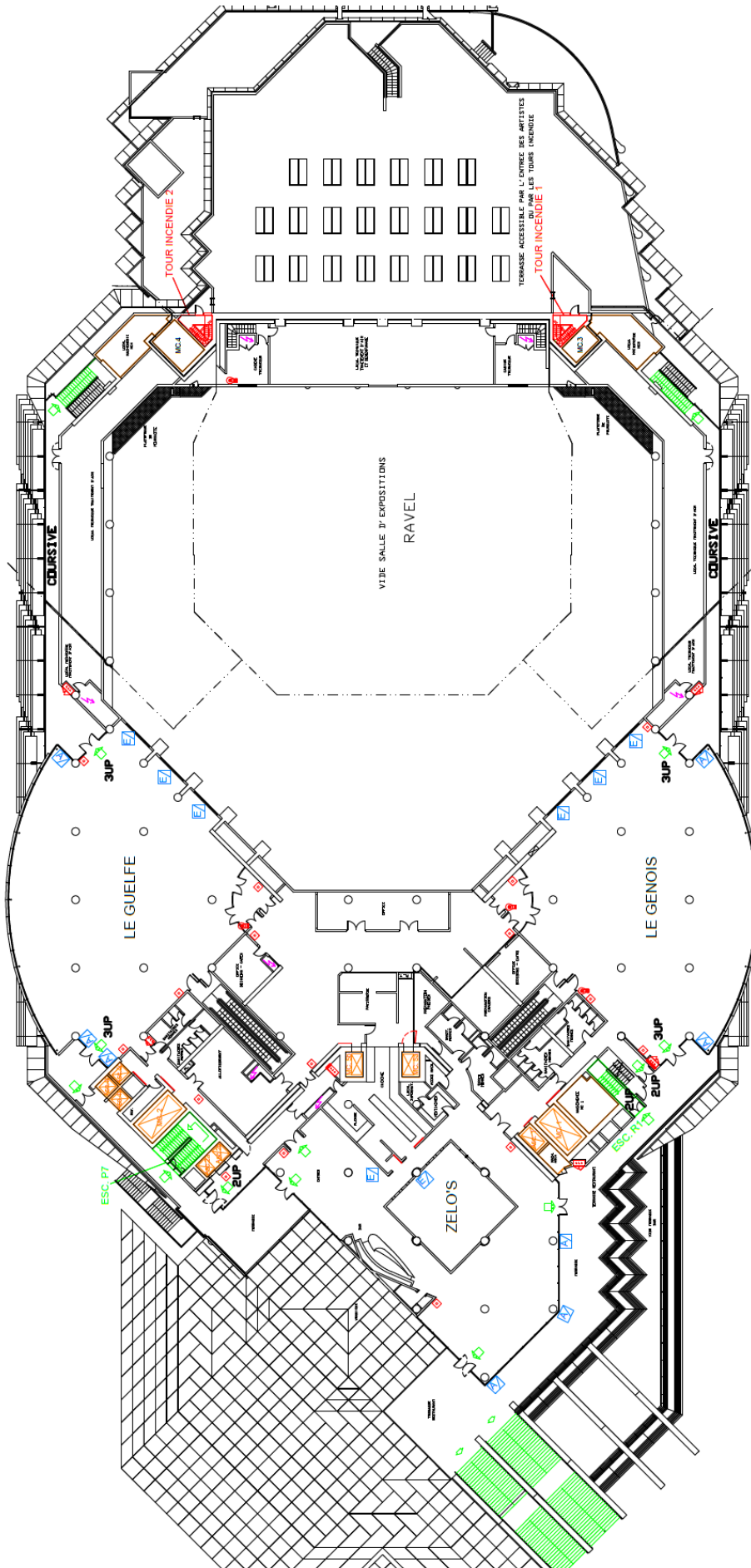
Diaghilev plan and back hall to be validated as extension work progresses

(rough plans, not valid for precise location of different elements)



 <b>GRIMALDIFORMUM</b> FORMES	<b>EMPLACEMENTS RESERVES</b> <b>AUX SAPEURS POMPIERS</b>	DESINE PAR : G. BERTHOISE VERIFIE PAR : M. VAN ECKHOUT APPROUVE PAR : M. CARLIANA	NOUVEAU COUPE	INCEE B DATE : 11 JANVIER 2011
	EXTERIEURS			





DESSINE PAR: S. BENOISTE  
 VERIFIE PAR: M. VAN ROMPU  
 APPROUVE PAR: M. CARLINA  
 INDEX: B  
 DATE: 11 JANVIER 2011  
 ECHELLE: 1/50000000  
 NIVEAU: +2 (N2)

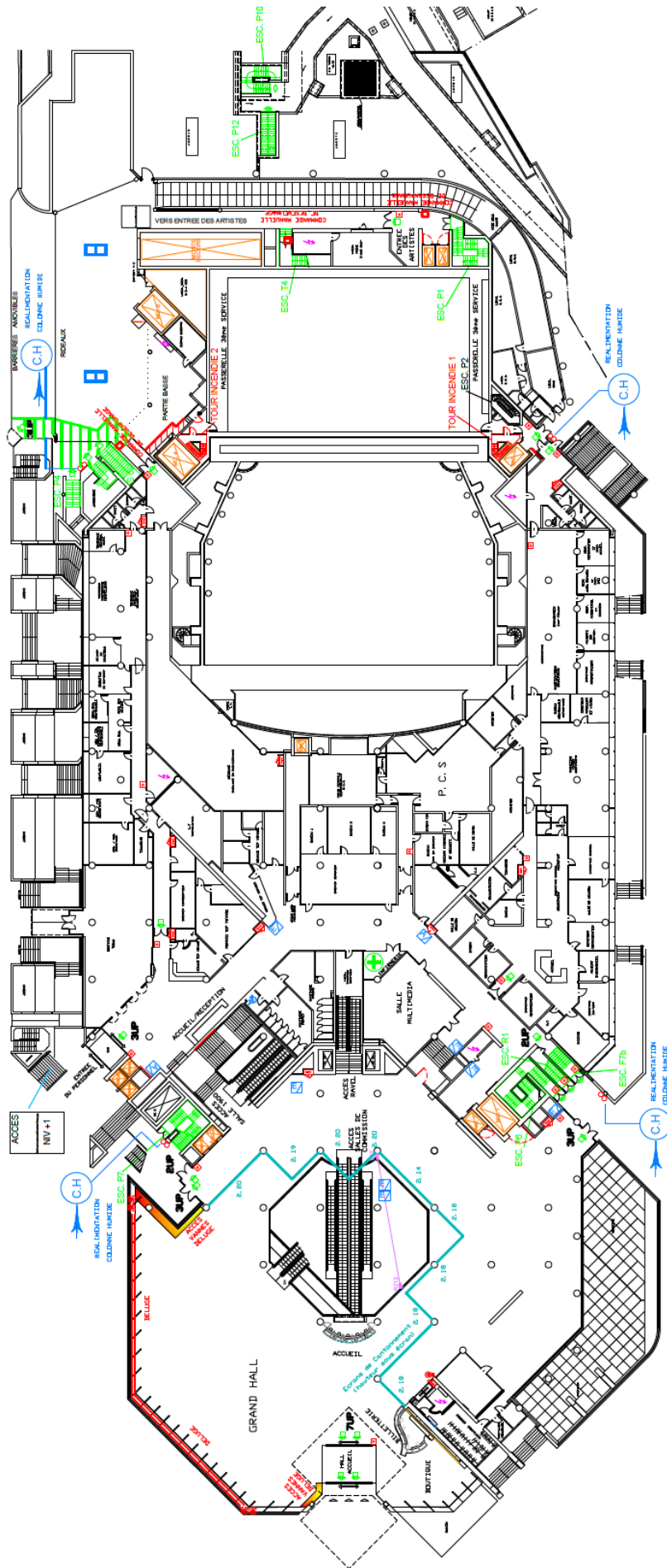








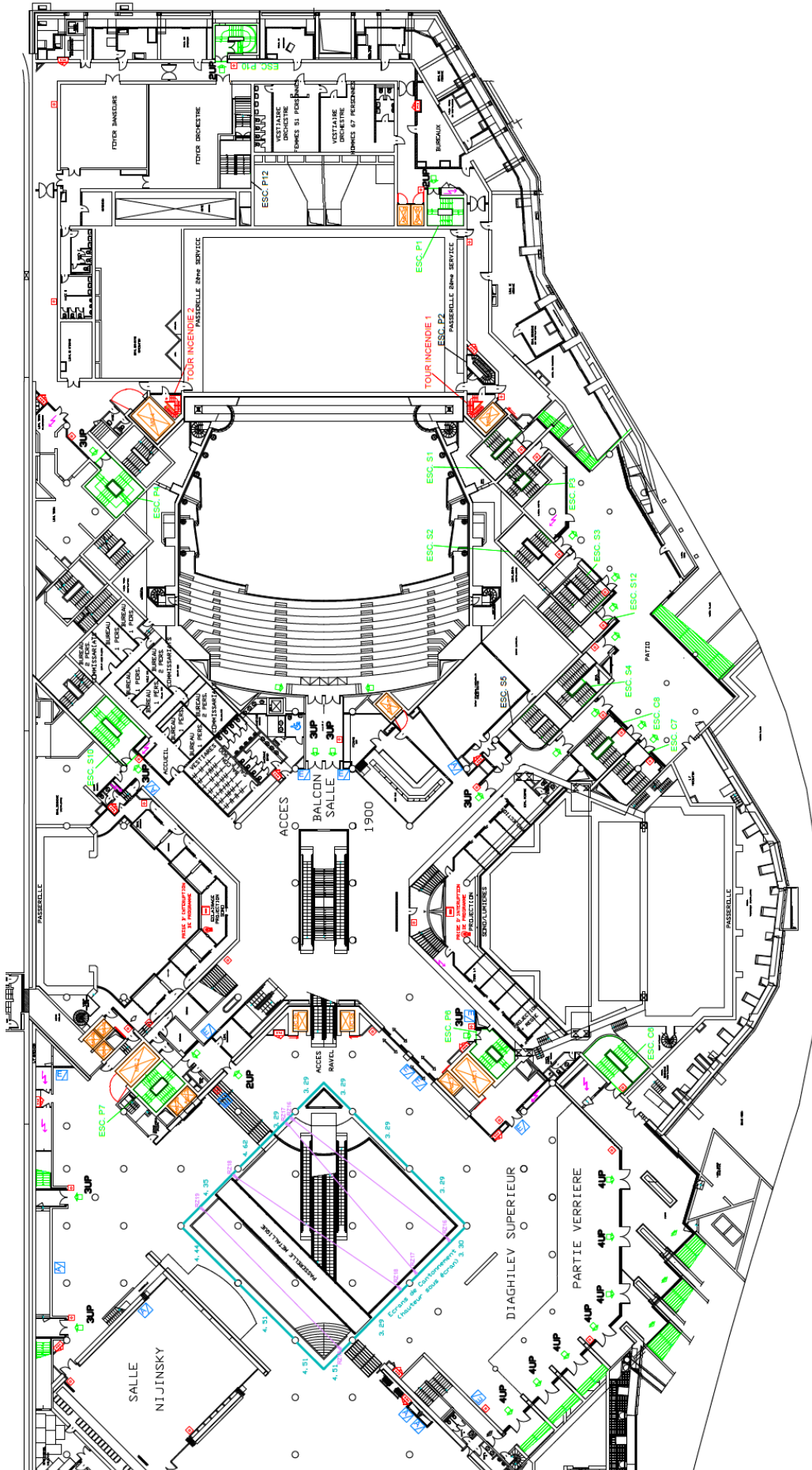




ACCES LOCAL ELECTRIQUE EXTINCTEUR PORTE COUPE-FEU ALARME PANEAU DE COMMANDE PANEAU DE COMMANDE	EXTINCTEUR PORTE COUPE-FEU ALARME PANEAU DE COMMANDE PANEAU DE COMMANDE	DESSINEUR: P. L. / ARCHITECTE: S. L. / DATE: 30 JANVIER 2012 INDEX: C NIVEAU 0 (RDO) ~ REZ DE CHAUSSEE ~ ESCHELLE
--	---	---



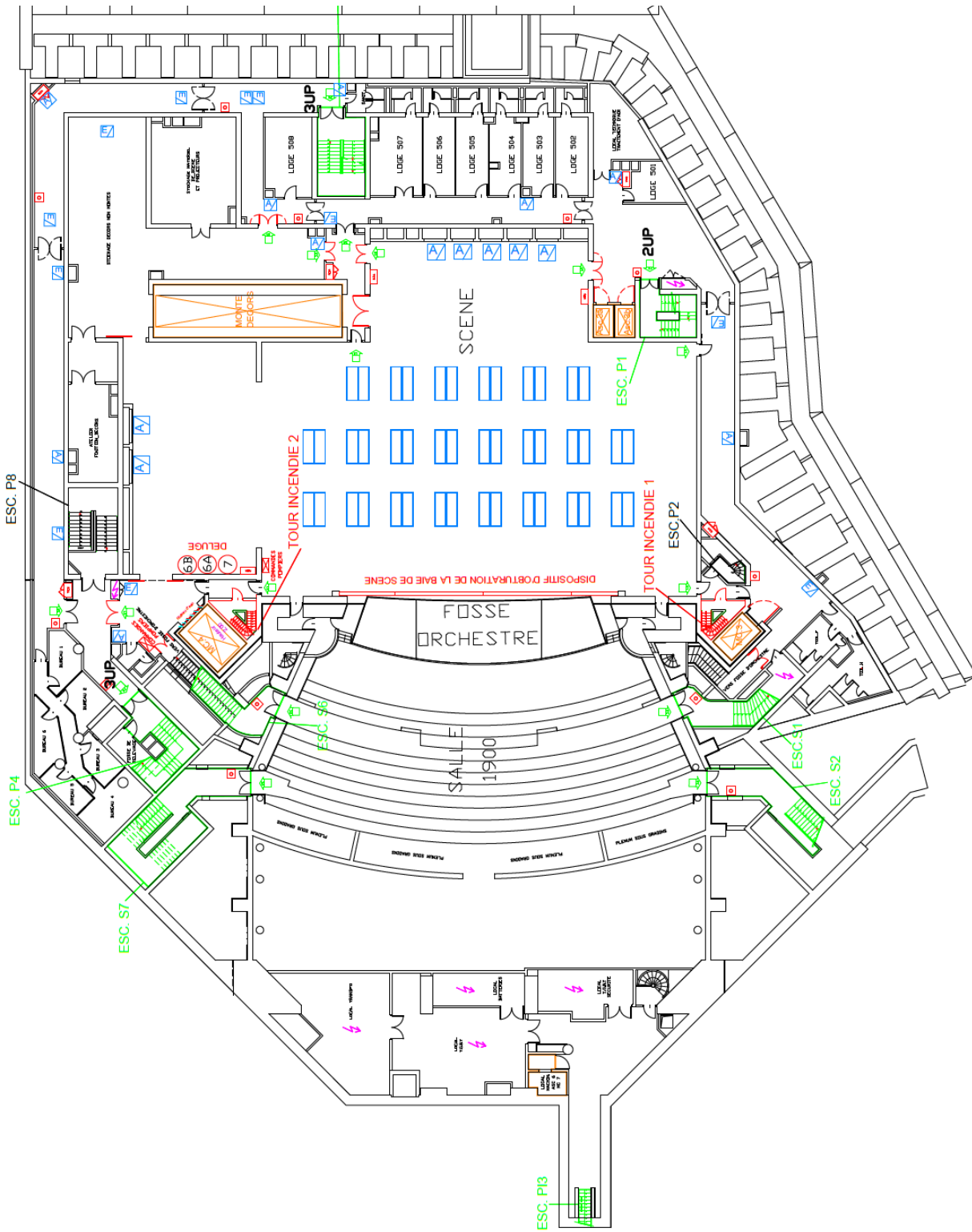




		DESSINE PAR: G. BOURGHESE VERIFIE PAR: L. VANDROMP APPROUVE PAR: M. MESSIAEN	INDEX: G DATE: 20 JANVIER 2013 ECHELLE:
			NIVEAU -1 (MZ) Sud -MEZZANINE-
			DETECTEUR LAMPE OPTIQUE
			ESCALIER OPTIQUE
			R1A R1A R1A
			R1A R1A R1A







			DECLENCHEUR MANUEL		R.I.A		DESENFUMAGE AMENEE D'AIR		DESENFUMAGE EXTRACTION D'AIR		DESENFUMAGE SKYDOME TOUTURE	DESSINE PAR : G. BORGHESE H.VAN ROMPU VERIFIE PAR : M. HUERRE APPROUVE PAR : M. CARRUANA	INDICE : A DATE : 19 janvier 2007
			LOCAL ELECTRIQUE		ASCENSEUR MONTE-CHARGES		ISSUE DE SECOURS		PORTE COUPE-FEU	NIVEAU -5 (S3) -SCENE SALLE DES PRINCES-	ESCHELLE :		
			DESENFUMAGE EXTRACTION D'AIR		DESENFUMAGE SKYDOME TOUTURE	ESCHELLE :							

## SAFETY OFFICER FORM

I, the undersigned, Mr/Ms.....  
representing the company.....  
acting in my capacity as organiser of the event entitled.....  
.....  
that will take place at the Grimaldi Forum  
from.....to.....

### OPTION 1

commission, via the present document, the company Grimaldi Forum to fulfil, in my name and with the assistance of qualified staff, the role of safety officer.

Date mission commences (drawing up of plans): .....

Date mission ends (when exhibition closes to public: date and time): .....

.....

Signed ..... on .....

Organiser's signature and stamp,  
preceded by the words  
"Mandate valid" written by hand.

### OPTION 2

inform the company Grimaldi Forum that the position of safety officer will be occupied by :

Mr.....

Qualifications (provide proof) : .....

.....

Adress : .....

.....

Telephone : .....Fax : .....

Date mission commences (drawing up of plans): .....

Date mission ends (when exhibition closes to public: date and time): .....

.....

Signed ..... on .....

Organiser's signature and stamp,  
preceded by the words  
"Mandate valid" written by hand.