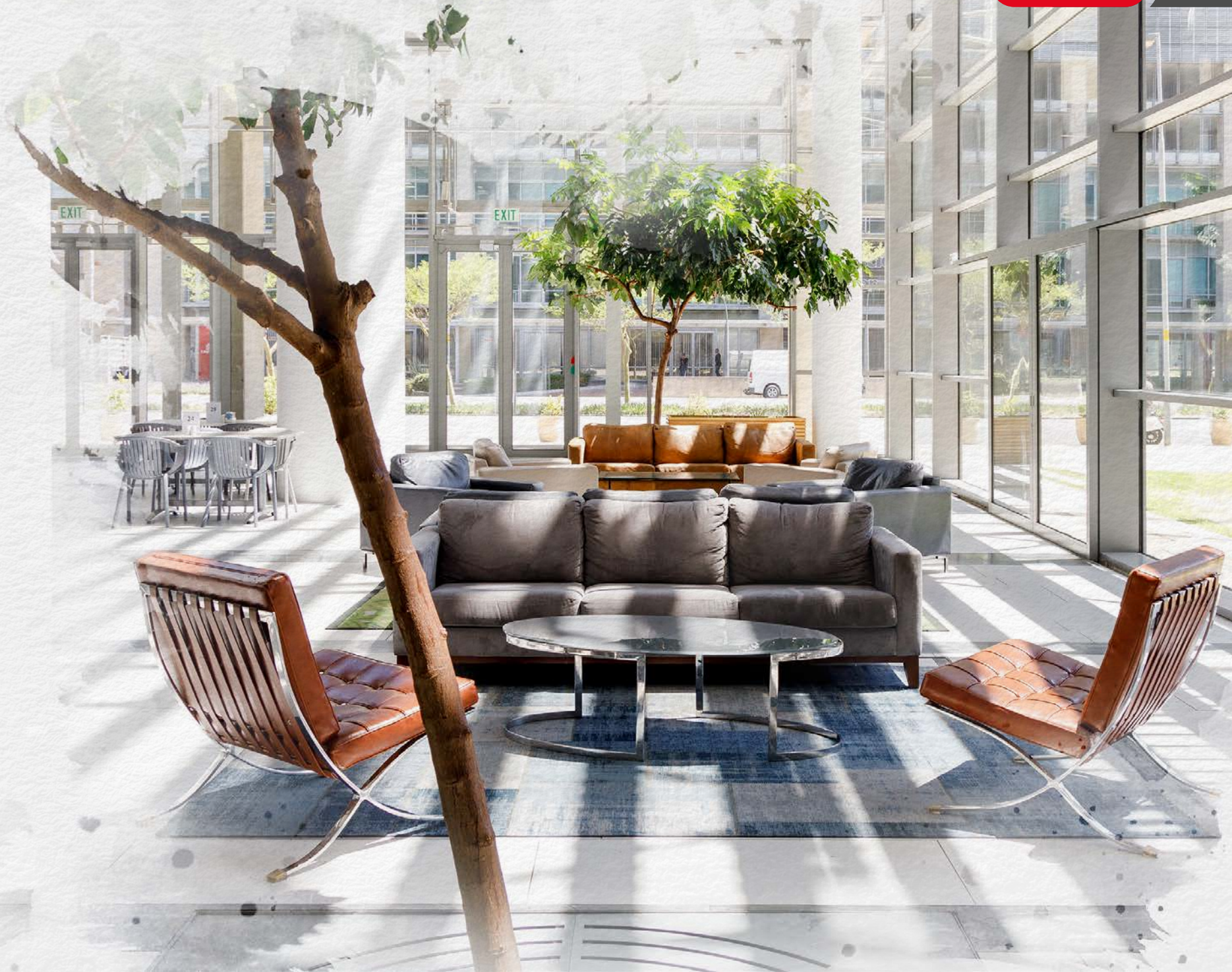


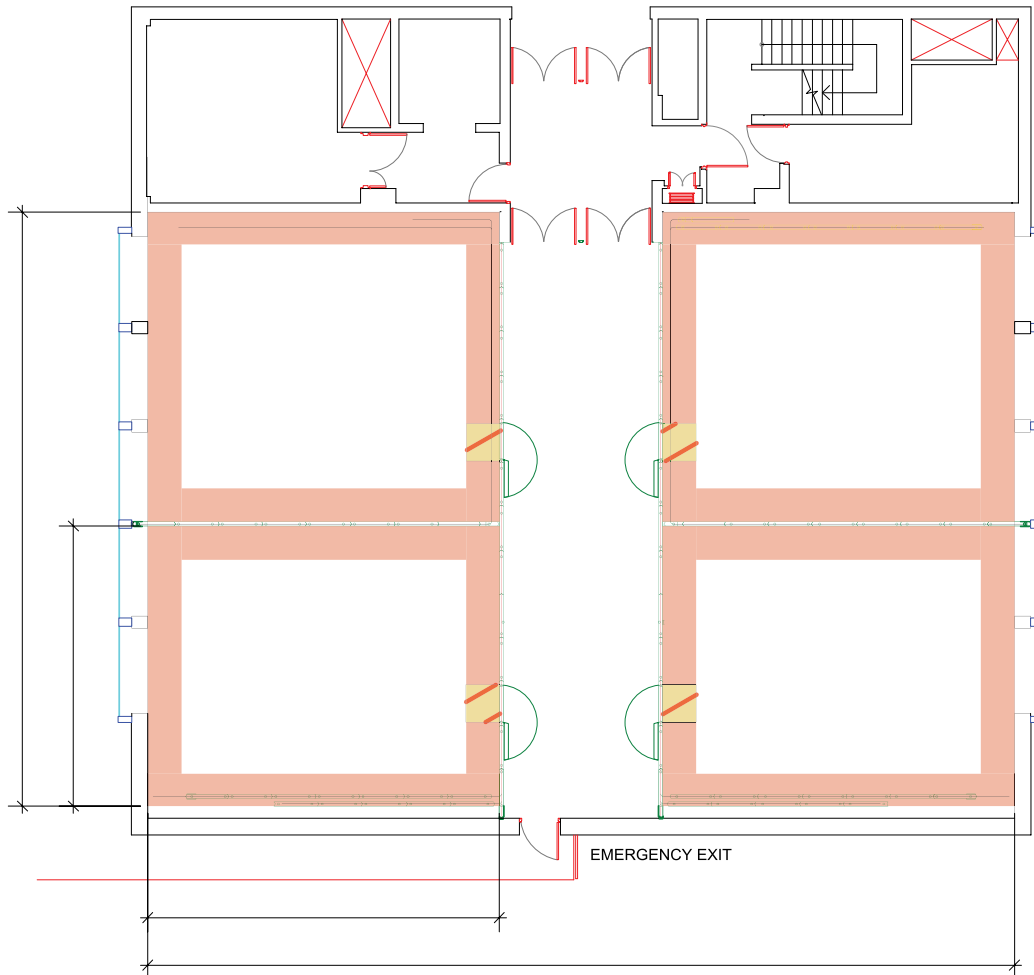
VENUE FLOOR PLANS



CTICC 1 MEETING ROOMS



CTICC 1 MEETING ROOMS 1.40 & 1.60



CTICC 1 MEETING ROOMS 1.40 & 1.60 SPECIFICATIONS

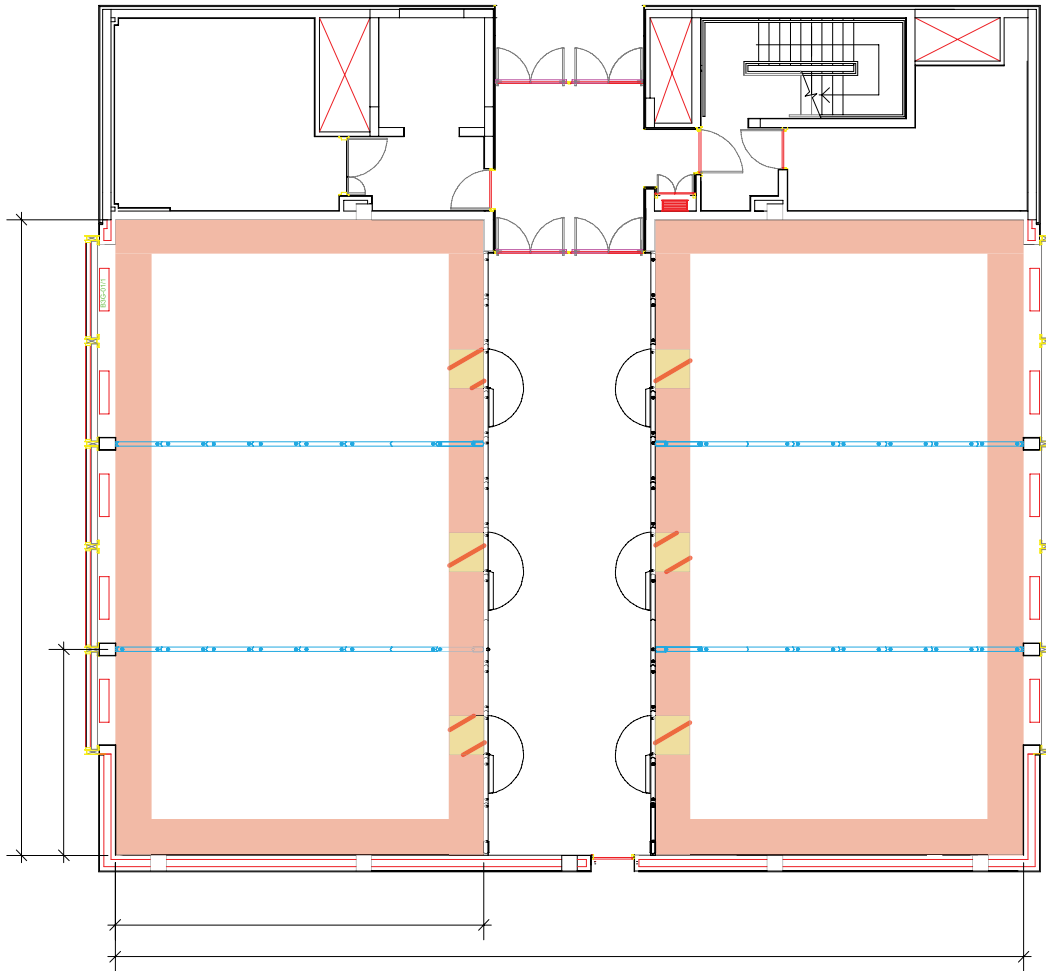
Length	23.4 m
Width	16 m
Total area	375 m ²
Height	4 m
Doors: Front-of-house & Service	Width: 3.75 m Height: 2.2 m
Air-conditioning	Automatic
Light intensity	0% or 100% (pre-sets)
Light facilities	Downlights
Audio-visual	Available from CTICC's preferred service providers
Description	These rooms can be divided into four smaller areas with a maximum capacity of 60 in theatre-style seating
Overlooks	Conservatories
Theatre-style capacity	330
Classroom-style capacity	220
U-shape-style capacity	69
Banquet-style capacity	220
Banquet buffet-style capacity	180
Cocktail-style capacity	300
Carpets	Standard

CTICC 1 MEETING ROOM PROJECTION SCREENS

Each breakout room has one electronic projection screen installed – in other words, four in each breakout block on the first floor. The details of these electronic screens are as follows:

- **Type 2:** 3.65 m x 3.04 m (viewable surface) – on the first floor.

CTICC 1 MEETING ROOMS 2.40 & 2.60



CTICC 1 MEETING ROOMS 2.40 & 2.60 SPECIFICATIONS

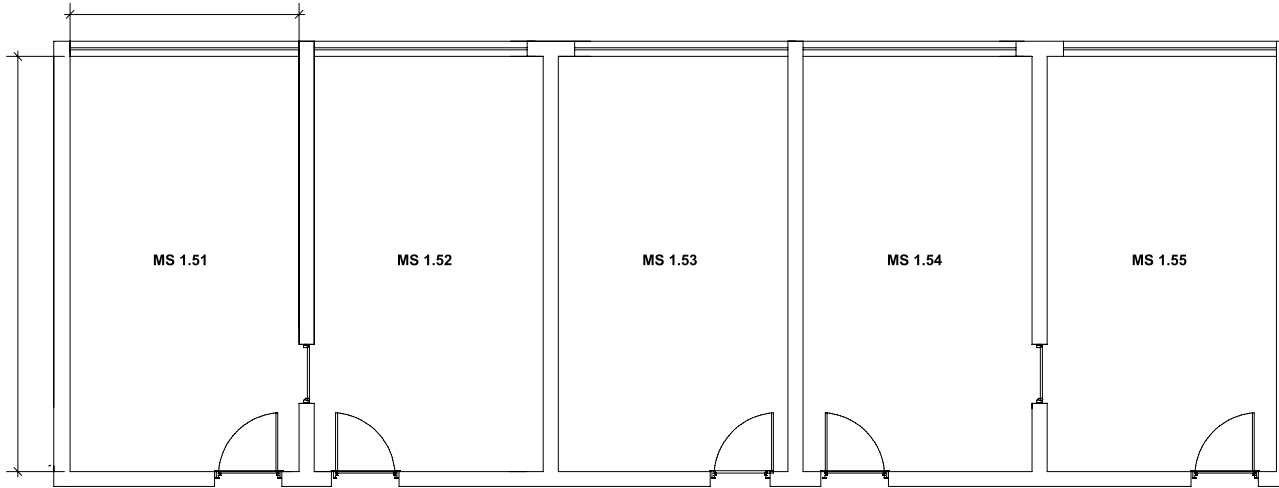
Length	23.4 m
Width	16 m
Total area	375 m ²
Height	4 m
Doors: Front-of-house & Service	Width: 3.75 m Height: 2.2 m
Air-conditioning	Automatic
Light intensity	0% or 100% (pre-sets)
Light facilities	Downlights
Audio-visual	Available from CTICC's preferred service providers
Description	These rooms can be divided into four smaller areas with a maximum capacity of 60 seated theatre-style
Overlooks	Conservatories
Theatre-style capacity	330
Classroom-style capacity	220
U-shape-style capacity	69
Banquet-style capacity	220
Banquet buffet-style capacity	180
Cocktail-style capacity	300
Carpets	Standard

MEETING ROOM PROJECTION SCREENS

Each breakout room has one electronic projection screen installed – in other words, six in each breakout block on the second floor. The details of these electronic screens are as follows:

- **Type 1:** 3.04 m x 2.43 m (viewable surface) on the second floor.

CTICC 1 MEETING SUITES 1.51 TO 1.55



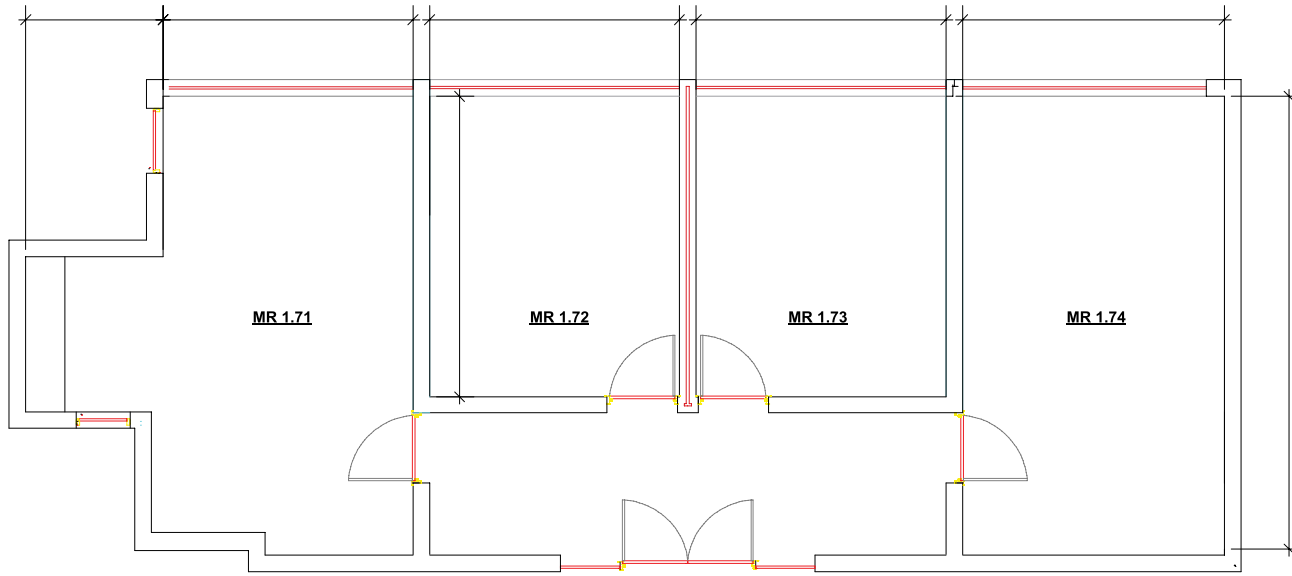
CTICC 1 MEETING SUITES 1.51, 1.52, 1.53, 1.54 AND 1.55 SPECIFICATIONS

Length	7.9 m
Width	4.5 m
Total area	35 m ²
Height	3.3 m
Doors: Front-of-house & Service	Width: 3.75 m Height: 2.2 m
Air-conditioning	Automatic
Light intensity	0% or 100% (pre-sets)
Light facilities	Downlights (non-dimmable)
Audio-visual	Projector, screen, included in venue rental
Description	VIP Suite
Overlooks	Meeting suite 1.51 – 1.53 overlooks Exhibition Hall 2 Meeting suite 1.54 – 1.55 overlooks Exhibition Hall 3
Theatre-style capacity	24
Classroom-style capacity	18
U-shape-style capacity	15
Boardroom-style capacity	18
Carpets	Standard

*Meeting Suite 1.51 interconnects with Meeting Suite 1.52

*Meeting Suite 1.54 interconnects with Meeting Suite 1.55

CTICC 1 MEETING SUITES 1.71 TO 1.74



CTICC MEETING SUITE 1.71 SPECIFICATIONS

Length	7.9 m
Width	4.5 m
Total area	35 m ²
Height	3.3 m
Doors: Front-of-house & Service	Width: 3.75 m Height: 2.2 m
Air-conditioning	Automatic
Light intensity	0% or 100% (pre-sets)
Light facilities	Downlights (non-dimmable)
Audio-visual	Projector, screen, audio, and support available through CTICC's preferred service providers
Description	VIP Suite
Overlooks	Exhibition Hall 3
Theatre-style capacity	24
Classroom-style capacity	18
U-shape-style capacity	15
Boardroom-style capacity	18
Carpets	Standard

CTICC 1 MEETING SUITES 1.71 TO 1.74

CTICC MEETING SUITE 1.72 SPECIFICATIONS

Length	5.5 m
Width	4.5 m
Total area	24 m ²
Height	3.3 m
Doors: Front-of-house & Service	Width: 3.75 m Height: 2.2 m
Air-conditioning	Automatic
Light intensity	0% or 100% (pre-sets)
Light facilities	Downlights (non-dimmable)
Audio-visual	Projector, screen, audio, and support available through CTICC's preferred service provider
Description	VIP Suite
Overlooks	Exhibition Hall 3
Theatre-style capacity	24
Classroom-style capacity	18
U-shape-style capacity	15
Boardroom-style capacity	18
Carpets	Standard

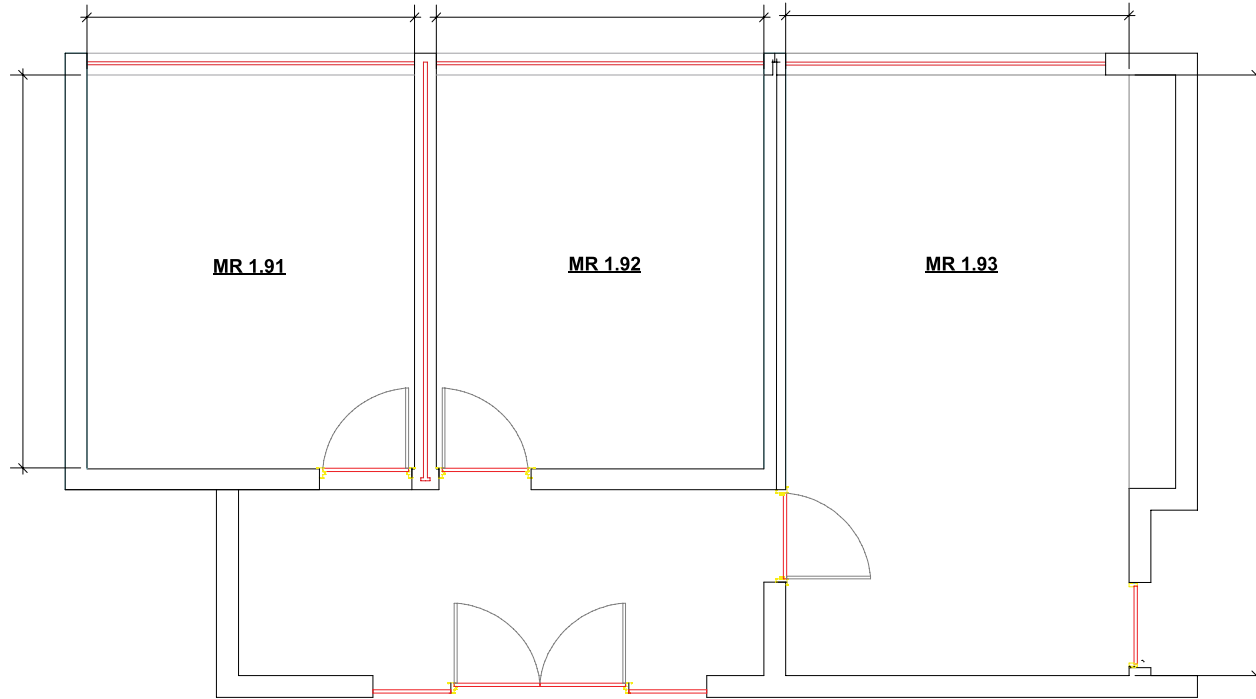
CTICC MEETING SUITE 1.73 SPECIFICATIONS

Length	5.5 m
Width	4.5 m
Total area	24 m ²
Height	3.3 m
Doors: Front-of-house & Service	Width: 3.75 m Height: 2.2 m
Air-conditioning	Automatic
Light intensity	0% or 100% (pre-sets)
Light facilities	Downlights (non-dimmable)
Audio-visual	Projector, screen, audio, and support available through CTICC's preferred service provider
Description	VIP Suite
Overlooks	Exhibition Hall 3
Theatre-style capacity	24
Classroom-style capacity	18
U-shape-style capacity	15
Boardroom-style capacity	18
Carpets	Standard

CTICC MEETING SUITE 1.74 SPECIFICATIONS

Length	7.9 m
Width	4.5 m
Total area	35 m ²
Height	3.3 m
Doors: Front-of-house & Service	Width: 3.75 m Height: 2.2 m
Air-conditioning	Automatic
Light intensity	0% or 100% (pre-sets)
Light facilities	Downlights (non-dimmable)
Audio-visual	Projector, screen, audio, and support available through CTICC's preferred service provider
Description	VIP Suite
Overlooks	Exhibition Hall 3
Theatre-style capacity	24
Classroom-style capacity	18
U-shape-style capacity	15
Boardroom-style capacity	18
Carpets	Standard

CTICC 1 MEETING SUITES 1.91 - 1.93



CTICC MEETING SUITE 1.91 SPECIFICATIONS

Length	5.5 m
Width	4.5 m
Total area	25 m ²
Height	3.3 m
Doors: Front-of-house & Service	Width: 3.75 m Height: 2.2 m
Air-conditioning	Automatic
Light intensity	0% or 100% (pre-sets)
Light facilities	Downlights (non-dimmable)
Audio-visual	Projector, screen, audio, and support available through CTICC's preferred service providers
Description	VIP Suite
Overlooks	Exhibition Hall 4A
Theatre-style capacity	24
Classroom-style capacity	18
U-shape-style capacity	15
Boardroom-style capacity	18
Carpets	Standard

CTICC 1 MEETING SUITES 1.91 - 1.93

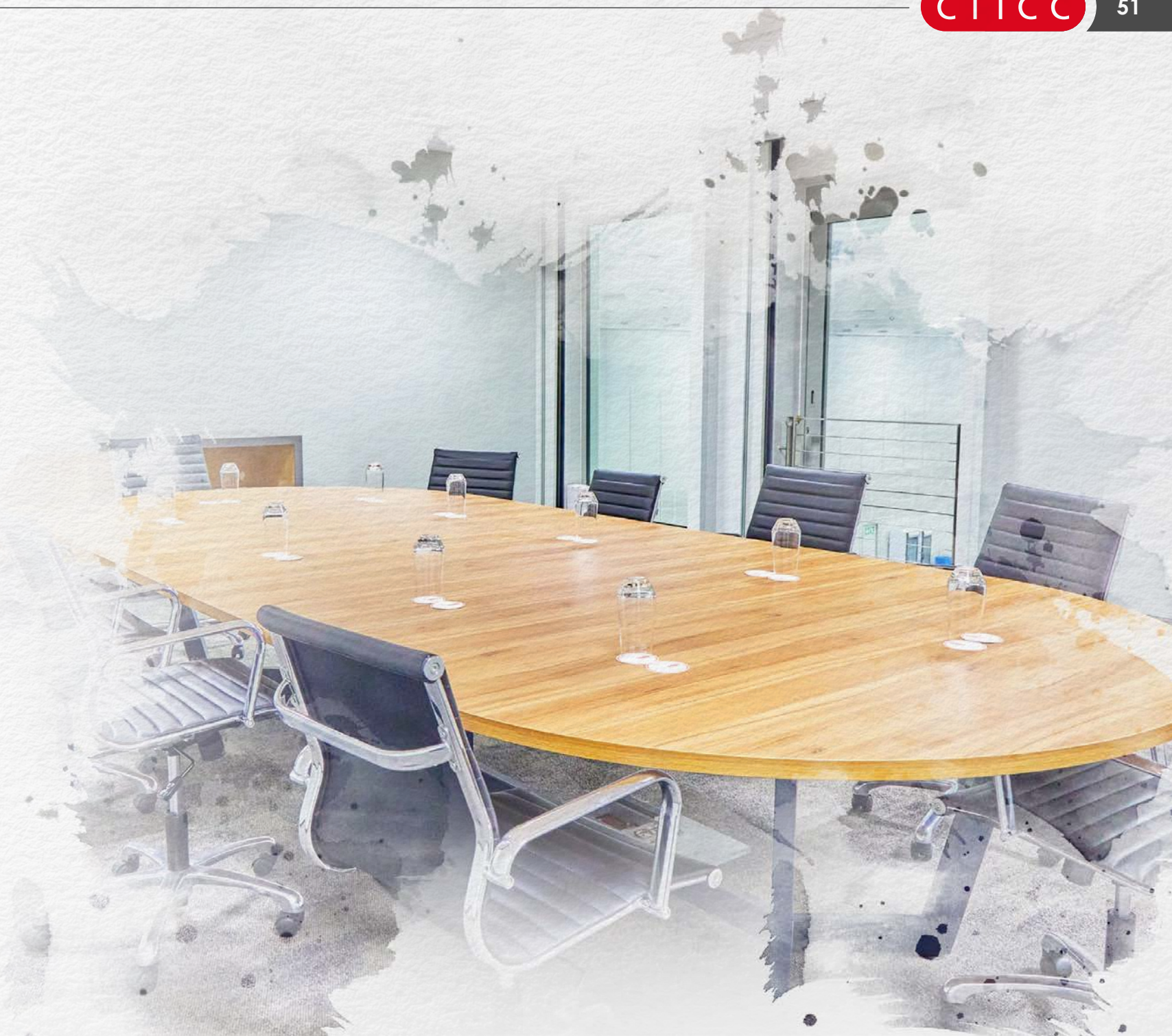
CTICC MEETING SUITE 1.92 SPECIFICATIONS

Length	5.5 m
Width	4.5 m
Total area	25 m ²
Height	3.3 m
Doors: Front-of-house & Service	Width: 3.75 m Height: 2.2 m
Air-conditioning	Automatic
Light intensity	0% or 100% (pre-sets)
Light facilities	Downlights (non-dimmable)
Audio-visual	Projector, screen, audio, and support available through CTICC's preferred service providers
Description	VIP Suite
Overlooks	Exhibition Hall 4A
Theatre-style capacity	24
Classroom-style capacity	18
U-shape-style capacity	15
Boardroom-style capacity	18
Carpets	Standard

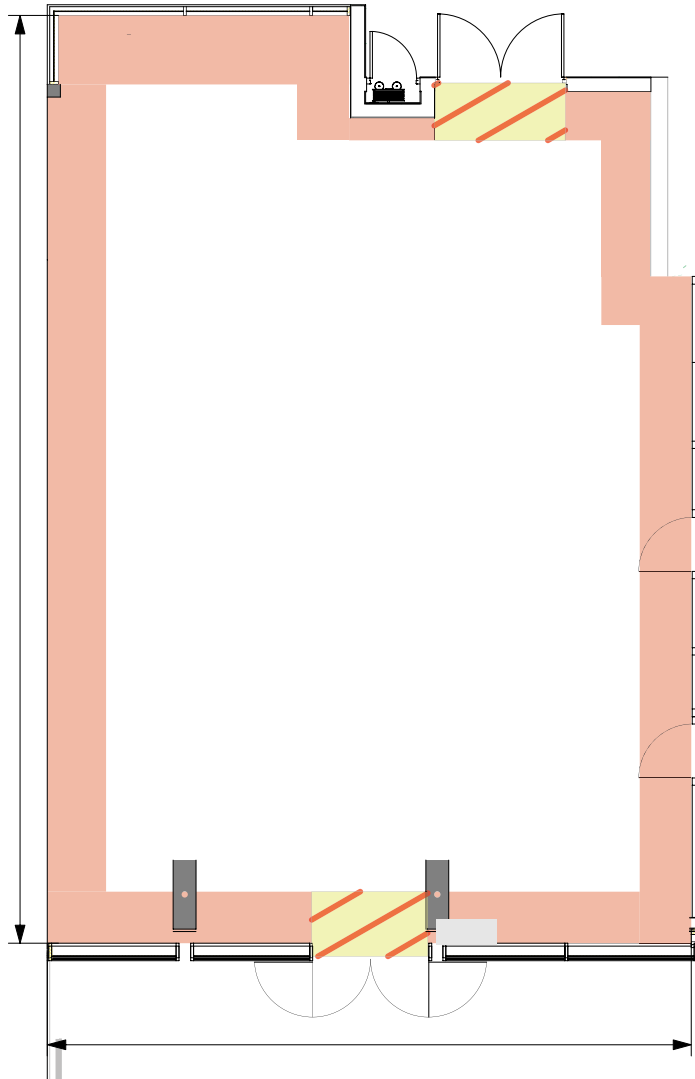
CTICC MEETING SUITE 1.93 SPECIFICATIONS

Length	7.9 m
Width	4.5 m
Total area	35 m ²
Height	3.3 m
Doors: Front-of-house & Service	Width: 3.75 m Height: 2.2 m
Air-conditioning	Automatic
Light intensity	0% or 100% (pre-sets)
Light facilities	Downlights (non-dimmable)
Audio-visual	Projector, screen, audio, and support available through CTICC's preferred service provider
Description	VIP Suite with bathroom/shower and kitchenette
Overlooks	Exhibition Hall 4A
Theatre-style capacity	24
Classroom-style capacity	18
U-shape-style capacity	15
Boardroom-style capacity	18
Carpets	Standard

CTICC 2 MEETING ROOMS



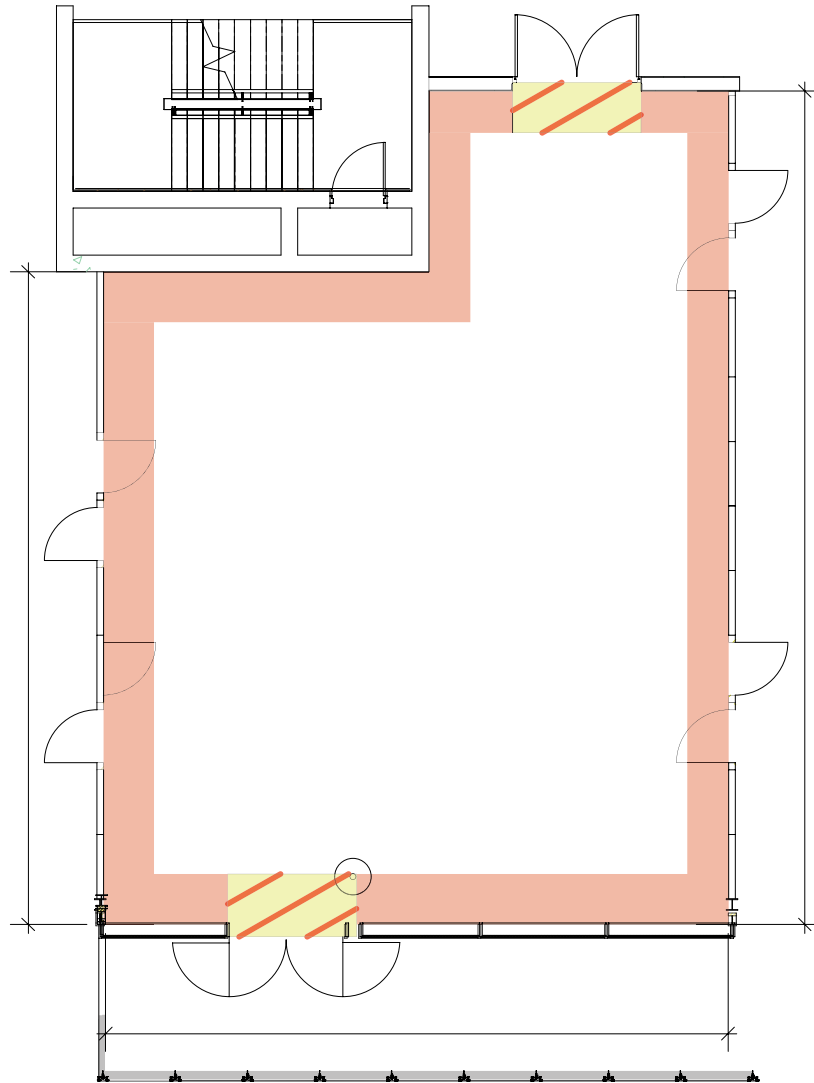
DAISY



DAISY

Length	16.19 m
Width	11.80 m
Total area	191 m ²
Height	3.15 m
Doors	Front-of-house
Air-conditioning	Automatic
Light intensity	0% to 100% (pre-sets)
Light facilities	0% to 100% dimmable LED lighting
Theatre-style capacity	146
Classroom-style capacity	126
Banquet-style capacity	60
Cocktail-style capacity	76
Carpets	Standard

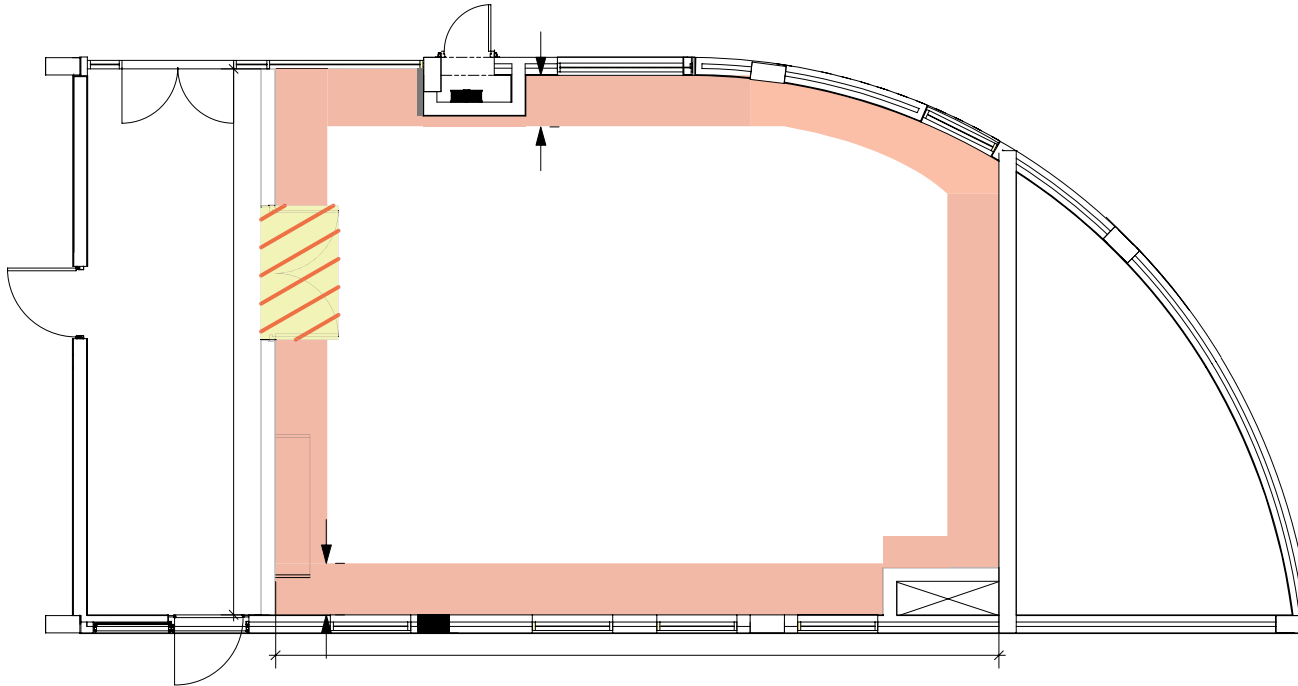
FREESIA



FREESIA

Length	14.88 m
Width	10.99 m
Total area	163 m ²
Height	3.15 m
Doors	Front-of-house
Air-conditioning	Automatic
Light intensity	0% to 100% (pre-sets)
Light facilities	0% to 100% dimmable LED lighting
Theatre-style capacity	136
Classroom-style capacity	111
Banquet-style capacity	60
Cocktail-style capacity	68
Carpets	Standard

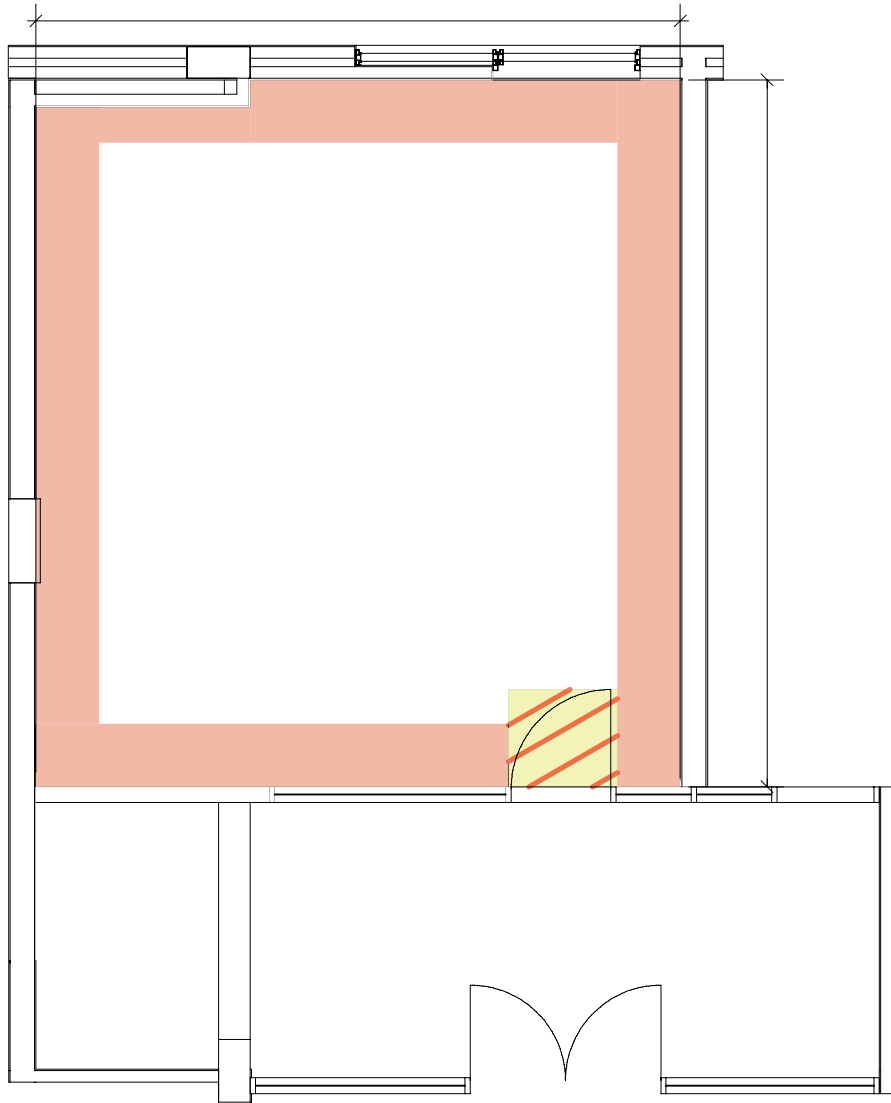
PINCUSHION



PINCUSHION

Length	12.60 m
Width	8.60 m
Total area	147 m ²
Height	2.8 m
Doors	Front-of-house
Air-conditioning	Automatic
Light intensity	0% to 100% (pre-sets)
Light facilities	0% to 100% dimmable LED lighting
Boardroom capacity	24
Carpets	Standard

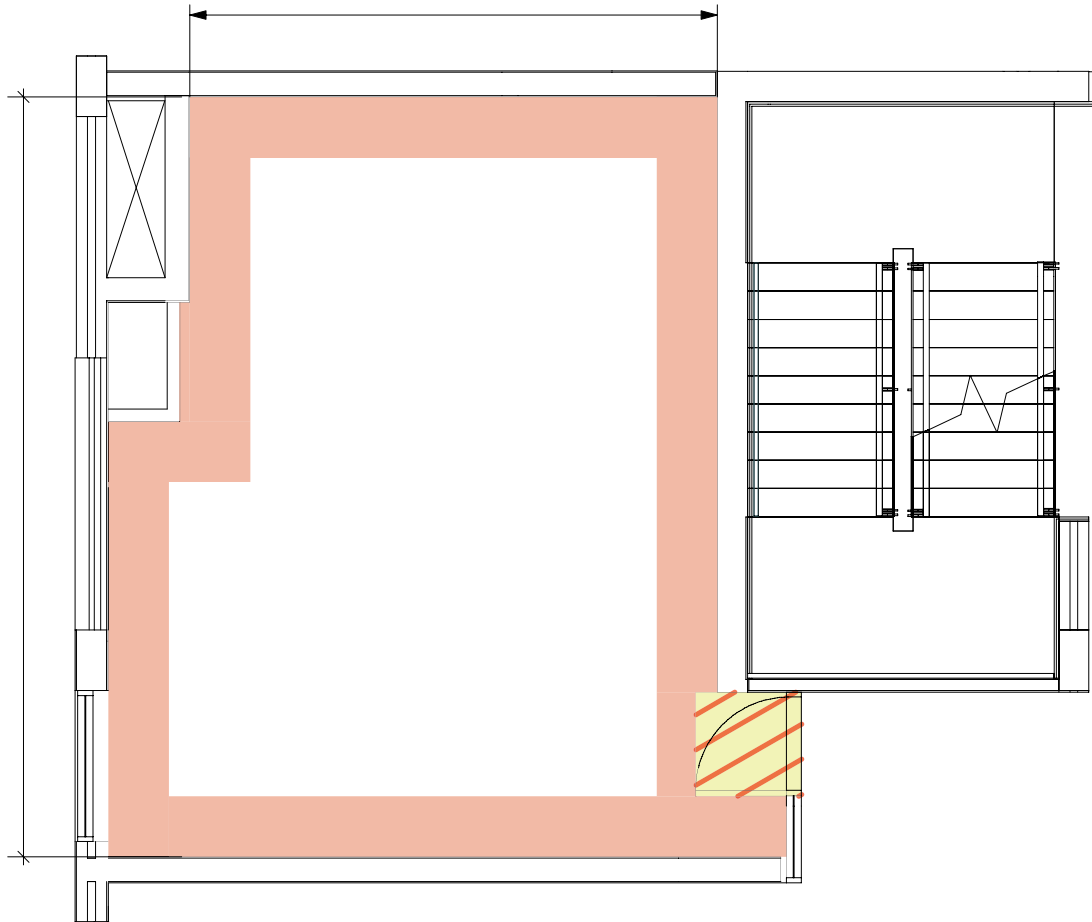
ARUM



ARUM

Length	6.73 m
Width	6.12 m
Total area	41 m ²
Height	2.7 m
Doors	Front-of-house
Air-conditioning	Automatic
Light intensity	0% to 100% (pre-sets)
Light Facilities	0% to 100% dimmable LED lighting
Theatre-style capacity	40
Classroom-style capacity	18
Boardroom capacity	10
Carpets	Standard

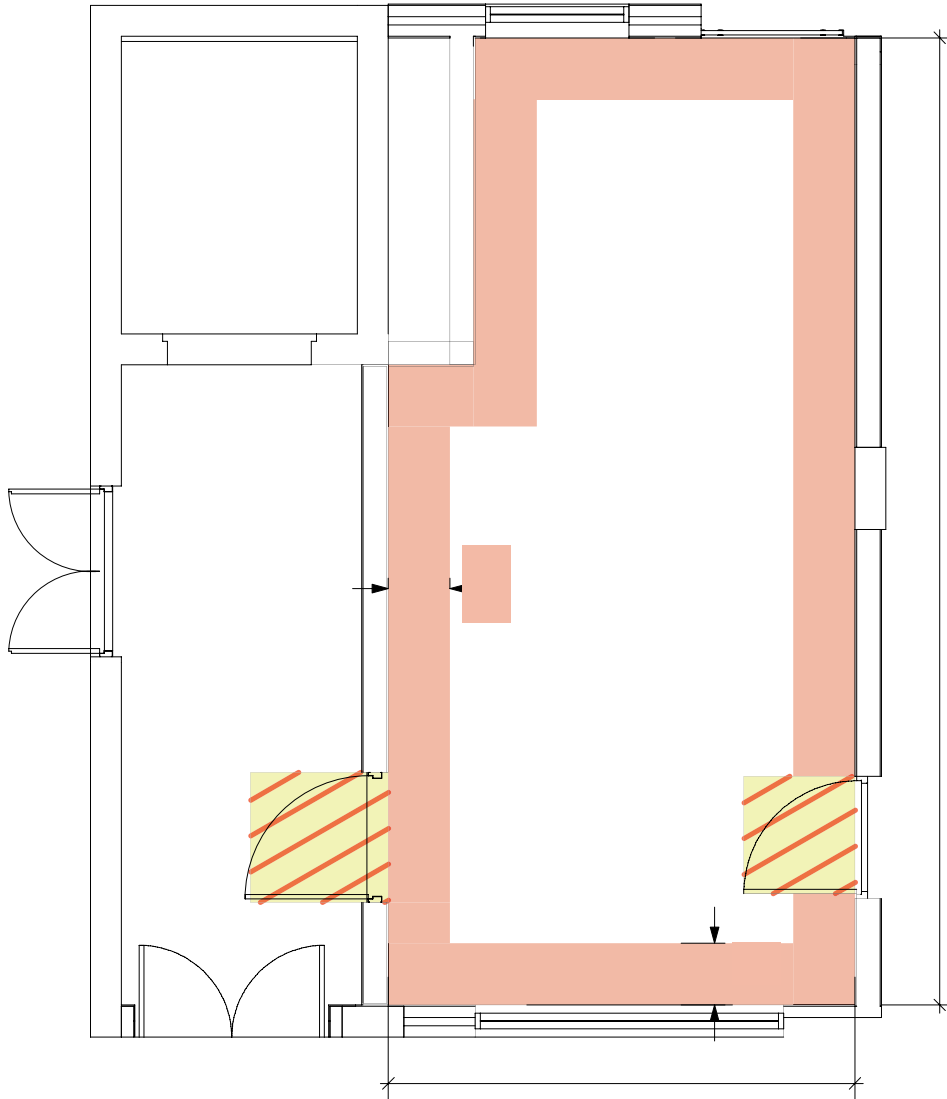
DISA



DISA

Length	6.04 m
Width	7.54 m
Total area	41 m ²
Height	2.7 m
Doors	Front-of-house
Air-conditioning	Automatic
Light intensity	0% to 100% (pre-sets)
Light facilities	0% to 100% dimmable LED lighting
Theatre-style capacity	37
Classroom-style capacity	24
Boardroom capacity	10
Carpets	Standard

ALOE



ALOE

Length	9.44 m
Width	4.54 m
Total area	40 m ²
Height	2.8 m
Doors	Front-of-house
Air-conditioning	Automatic
Light intensity	0% to 100% (pre-sets)
Light facilities	0% to 100% dimmable LED lighting
Theatre-style capacity	32
Classroom-style capacity	15
Boardroom capacity	10
Carpets	Standard